

Low Pass Filter

DC to 4000 MHz

Maximum Ratings

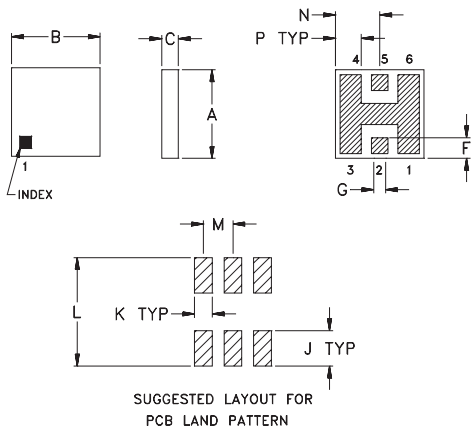
Operating Temperature	-55°C to 100°C
Storage Temperature	-55°C to 125°C

Pin Connections

RF IN	2**
RF OUT	5**
GROUND	1,3,4,6

** RF IN & RF OUT can be interchanged

Outline Drawing

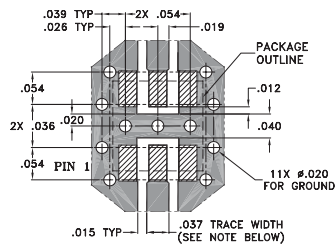


TOLERANCE UNLESS OTHERWISE STATED
2 PLACES DECIMAL: ± 0.01
3 PLACES DECIMAL: ± 0.005


Outline Dimensions (inch)

A	B	C	D	E	F	G	
.150	.150	.028	—	—	.035	.028	
3.81	3.81	0.71	—	—	0.89	0.71	
H	J	K	L	M	N	P	wt.
—	.060	.030	.184	.050	.075	.044	grams
—	1.52	0.76	4.67	1.27	1.91	1.12	0.15

Demo Board MCL P/N: TB-233
Suggested PCB Layout (PL-112)



NOTE: TRACE WIDTH IS SHOWN FOR ROGERS RO4350
WITH DIELECTRIC THICKNESS .020" \pm .0015".
COPPER: 1/2 OZ. EACH SIDE.
FOR OTHER MATERIALS TRACE WIDTH MAY NEED
TO BE MODIFIED.

 DENOTES PCB COPPER LAYOUT

 DENOTES COPPER LAND PATTERN FREE OF SOLDERMASK

Features

- miniature size, 0.15"X0.15"X.028"
- low profile, .028" height
- high power handling, 10W

Applications

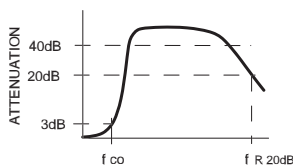
- harmonic rejection
- internal rejection
- receivers & transmitters

Low Pass Filter Electrical Specifications (T_{AMB}=25°C)

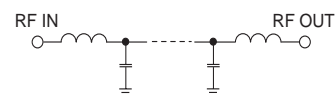
MODEL NO.	PASSBAND (MHz) (loss < 1 dB) Typ.	fco, MHz Nom. (loss 3 dB) Typ.	STOP BAND (MHz) (> 20 dB) (loss> 40 dB) fr20dB Typ.		VSWR (:1) Passband Typ.	POWER INPUT* (W)	MARKING	NO. OF SECTIONS
LF7C-4000	DC-4000	5325	7250	— 9500	1.2	10	LF10	7

* Derate linearly to 4W at 100°C ambient

typical frequency response

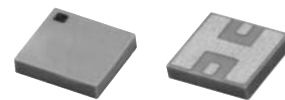
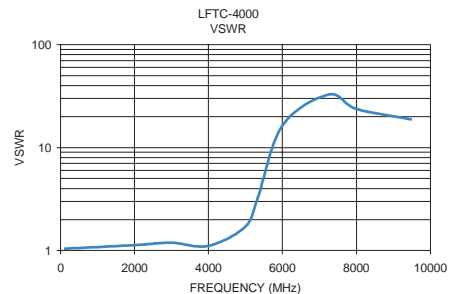
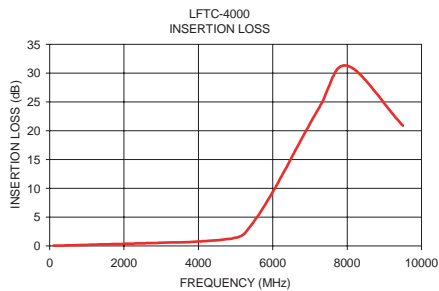


schematic



Typical Performance Data at 25°C

Frequency (MHz)	Insertion Loss (dB)	VSWR (:1)
100.00	0.06	1.04
2000.00	0.39	1.13
3000.00	0.57	1.19
4000.00	0.79	1.11
5000.00	1.44	1.71
5325.00	2.83	3.18
6000.00	9.41	16.39
7250.00	24.10	32.71
8000.00	31.32	23.73
9500.00	20.89	18.69



CASE STYLE: FR933
PRICE: \$3.75 ea. QTY (10-49)



Distribution Centers NORTH AMERICA 800-654-7949 • 417-335-5935 • Fax 417-335-5945 • EUROPE 44-1252-832600 • Fax 44-1252-837010

ISO 9001 CERTIFIED

INTERNET <http://www.minicircuits.com>

P.O. Box 350166, Brooklyn, New York 11235-0003 (718) 934-4500 Fax (718) 332-4661

REV. E
M88950
LFTC-4000
EDB-020612
WZ/RS/CP
030918