

Surface Mount Directional Coupler

50Ω 5 to 500 MHz

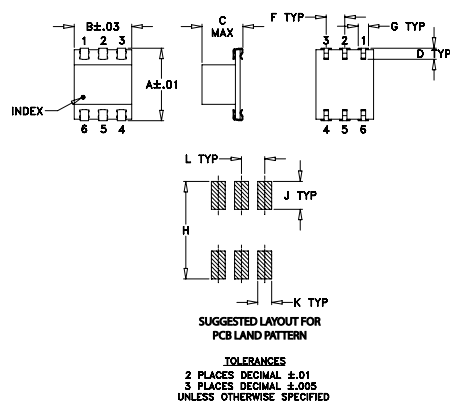
Maximum Ratings

Operating Temperature	-40°C to 85 °C
Storage Temperature	-55°C to 100°C

Pin Connections

INPUT	6
OUTPUT	1
COUPLED	4
GROUND	2,5
ISOLATE (DO NOT USE)	3

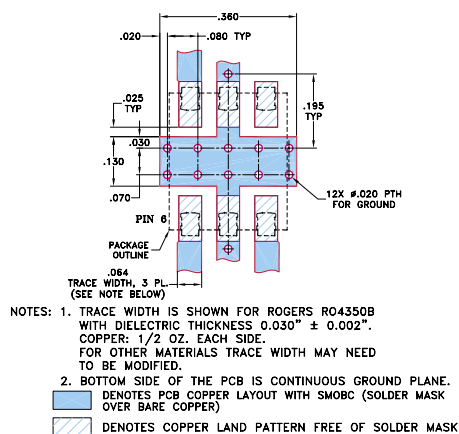
Outline Drawing



Outline Dimensions (inch)

A	B	C	D	E	F	G
.400	.31	.200	.10	.10	.100	.050
10.16	7.87	5.08	2.54	0.25	2.54	1.27
H	J	K	L	M		wt
.420	.120	.060	.100	.020		grams
10.67	3.05	1.52	2.54	0.51		0.55

Demo Board MCL P/N: TB-31 Suggested PCB Layout (PL-087)



Features

- low insertion loss, 0.9 dB typ.
- high directivity, 30 dB typ.
- aqueous washable
- J-leads for strain relief and excellent solderability

Applications

- VHF/UHF
- reflective power measurements
- communications
- signal sampling



CASE STYLE: QQQ569
PRICE: \$15.95 ea. QTY (1-9)

+ RoHS compliant in accordance with EU Directive (2002/95/EC)

The +Suffix identifies RoHS Compliance. See our web site for RoHS Compliance methodologies and qualifications.

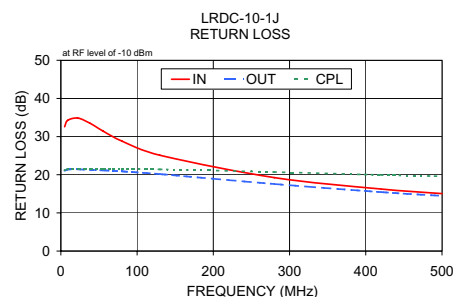
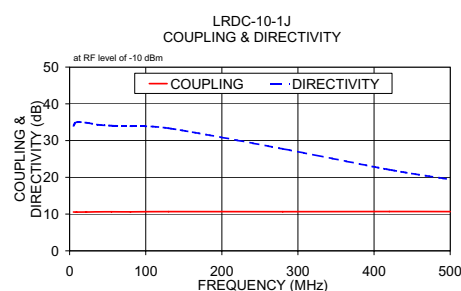
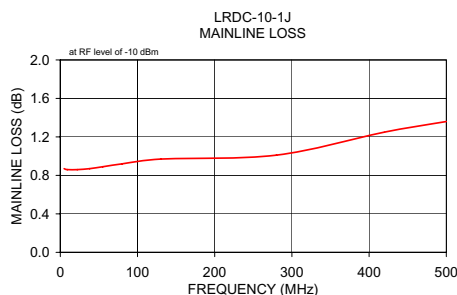
Directional Coupler Electrical Specifications

FREQ. (MHz)	COUPLING (dB)		MAINLINE LOSS ¹ (dB)						DIRECTIVITY (dB)						VSWR (:1)	POWER INPUT, W	
			L		M		U		L		M		U			L	MU
	f _L -f _U	Nom.	Flatness	Typ.	Max.	Typ.	Max.	Typ.	Max.	Typ.	Min.	Typ.	Min.	Typ.	Min.		
5-500	10.7±0.5	±0.5	0.9	1.4	0.9	1.4	1.2	1.9	31	25	30	20	25	16	1.2	1.0	1.0

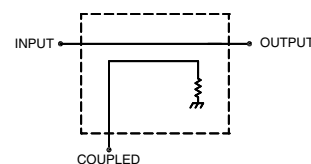
L = low range [f_L to 10 f_L] M = mid range [10 f_L to f_U/2] U = upper range [f_U/2 to f_U]
1. Mainline loss includes theoretical power loss at coupled port.

Typical Performance Data

Frequency (MHz)	Mainline Loss (dB) In-Out	Coupling (dB) In-Cpl	Directivity (dB)	Return Loss (dB)		
				In	Out	Cpl
5.00	0.87	10.56	34.05	32.58	21.08	21.19
9.00	0.86	10.55	34.98	34.24	21.38	21.44
22.00	0.86	10.57	34.87	34.86	21.43	21.53
38.00	0.87	10.61	34.30	33.52	21.31	21.52
55.00	0.89	10.62	34.06	31.49	21.16	21.52
80.00	0.92	10.61	33.94	28.84	20.90	21.53
130.00	0.97	10.68	33.37	25.10	20.17	21.41
280.00	1.01	10.66	27.76	19.24	17.58	20.72
420.00	1.25	10.69	22.09	16.25	15.45	19.95
500.00	1.36	10.67	19.44	15.06	14.47	19.60



electrical schematic



Mini-Circuits®

Distribution Centers NORTH AMERICA 800-654-7949 • 417-335-5935 • Fax 417-335-5945 • EUROPE 44-1252-832600 • Fax 44-1252-837010

Mini-Circuits ISO 9001 & ISO 14001 Certified

INTERNET <http://www.minicircuits.com>



REV. A
M98898
LRDC-10-1J
WZ/TD/CP
060718