

Surface Mount Directional Coupler

75Ω 5 to 600 MHz

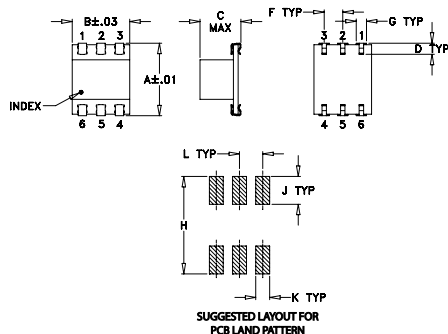
Maximum Ratings

Operating Temperature	-40°C to 85°C
Storage Temperature	-55°C to 100°C

Pin Connections

INPUT	6
OUTPUT	1
COUPLED	4
GROUND	2,5
ISOLATE (DO NOT USE)	3

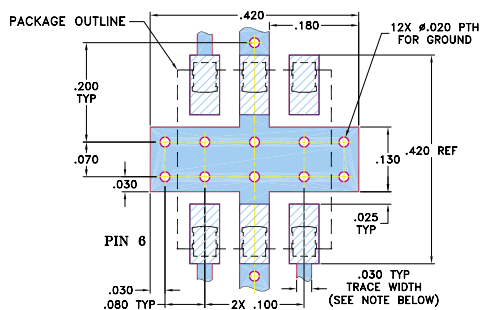
Outline Drawing



Outline Dimensions (inch)

A	B	C	D	E	F	G
.390	.31	.225	.060	—	.100	.045
9.91	7.87	5.72	1.52	—	2.54	1.14
H	J	K	L	M	wt	
.420	.120	.060	.100	—	grams	
10.67	3.05	1.52	2.54	—	0.50	

Demo Board MCL P/N: TB-34 Suggested PCB Layout (PL-043)



- NOTES: 1. TRACE WIDTH IS SHOWN FOR ROGERS RO4350B WITH DIELECTRIC THICKNESS 0.030" ± 0.002"; COPPER: 1/2 OZ. EACH SIDE. FOR OTHER MATERIALS TRACE WIDTH MAY NEED TO BE MODIFIED.
2. BOTTOM SIDE OF THE PCB IS CONTINUOUS GROUND PLANE.
- DENOTES PCB COPPER LAYOUT WITH SMOBC (SOLDER MASK OVER BARE COPPER)
- DENOTES COPPER LAND PATTERN FREE OF SOLDER MASK

Features

- low insertion loss, 0.5 dB typ.
- high directivity, 21 dB typ.
- aqueous washable
- J-leads for strain relief and excellent solderability

Applications

- VHF/UHF
- signal sampling
- communications
- cable tv



CASE STYLE: QQQ569
PRICE: \$11.95 ea. QTY (1-9)

+ RoHS compliant in accordance with EU Directive (2002/95/EC)

The +Suffix identifies RoHS Compliance. See our web site for RoHS Compliance methodologies and qualifications.

Directional Coupler Electrical Specifications

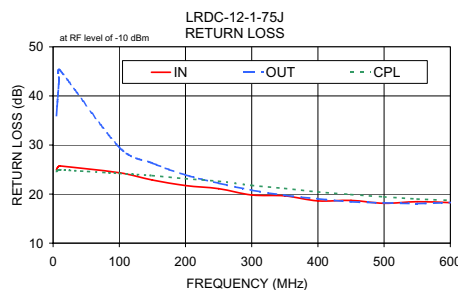
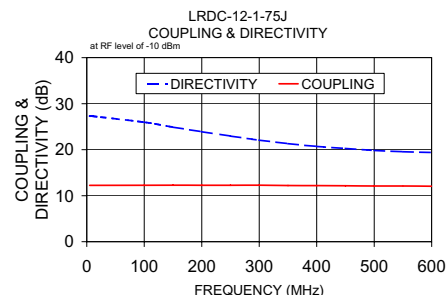
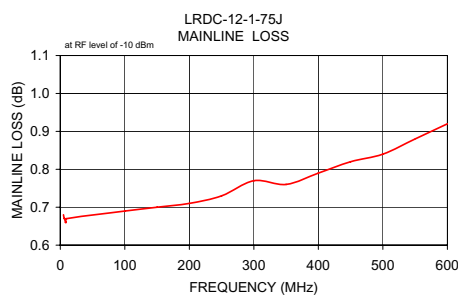
FREQ. (MHz)	COUPLING (dB)		MAINLINE LOSS ¹ (dB)						DIRECTIVITY (dB)						VSWR (:1)	POWER INPUT, W	
	Nom.	Flatness	L		M		U		L		M		U			L	MU
f _L -f _U			Typ.	Max.	Typ.	Max.	Typ.	Max.	Typ.	Min.	Typ.	Min.	Typ.	Min.	Typ.	Max.	Max.
5-600	12.2±0.5	±0.6	0.4	0.8	0.5	1.0	0.8	1.5	20	17	21	18	20	12	1.3	1.0	1.0

L = low range [f_L to 10 f_L] M = mid range [10 f_L to f_U/2] U = upper range [f_U/2 to f_U]

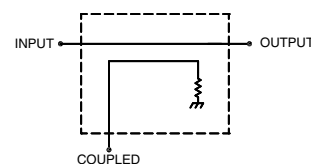
1. Mainline loss includes theoretical power loss at coupled port.

Typical Performance Data

Frequency (MHz)	Mainline Loss (dB) In-Out	Coupling (dB) In-Cpl	Directivity (dB)	Return Loss (dB)		
				In	Out	Cpl
5.00	0.68	12.25	27.30	24.93	36.02	24.62
6.00	0.67	12.24	27.29	25.25	37.90	24.76
8.00	0.66	12.24	27.30	25.59	41.55	24.92
10.00	0.67	12.24	27.29	25.75	45.26	24.96
100.00	0.69	12.26	25.97	24.35	29.52	24.21
200.00	0.71	12.27	23.92	21.73	23.91	23.15
300.00	0.77	12.28	22.07	19.81	20.80	21.77
400.00	0.79	12.20	20.71	18.62	19.03	20.45
500.00	0.84	12.11	19.85	18.13	18.22	19.44
600.00	0.92	12.05	19.38	18.26	18.28	18.73



electrical schematic



Mini-Circuits®

Distribution Centers NORTH AMERICA 800-654-7949 • 417-335-5935 • Fax 417-335-5945 • EUROPE 44-1252-832600 • Fax 44-1252-837010

Mini-Circuits ISO 9001 & ISO 14001 Certified

INTERNET <http://www.minicircuits.com>



REV. B
M102713
LRDC-12-1-75J
WZ/TD/CP
060718