

Surface Mount Frequency Mixer

Level 17 (LO Power +17dBm) 10 to 1500 MHz

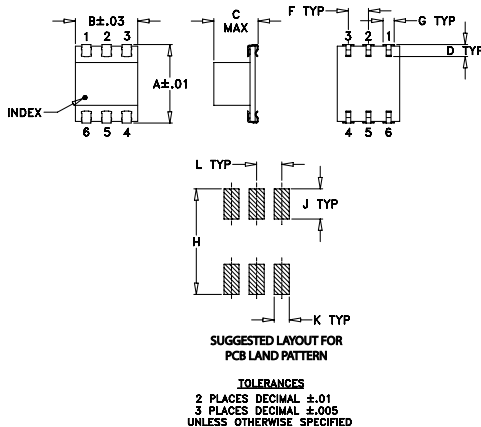
Maximum Ratings

Operating Temperature	-40°C to 85°C
Storage Temperature	-55°C to 100°C
RF Power	200mW
IF Current	40mA

Pin Connections

LO	1
RF	4
IF	5
GROUND	2,3,6

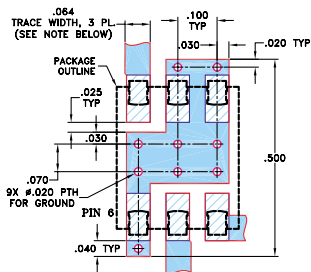
Outline Drawing



Outline Dimensions (inch)

A	B	C	D	E	F	G
.390	.31	.225	.060	---	.100	.045
9.91	7.87	5.72	1.52	---	2.54	1.14
H	J	K	L	M		wt
.420	.120	.060	.100	---		grams
10.67	3.05	1.52	2.54	---		0.50

Demo Board MCL P/N: TB-44 Suggested PCB Layout (PL-083)



NOTES: 1. TRACE WIDTH IS SHOWN FOR ROGERS RO4350B WITH DIELECTRIC THICKNESS 0.030 ± 0.002 ; COPPER: 1/2 OZ. EACH SIDE. FOR OTHER MATERIALS TRACE WIDTH MAY NEED TO BE MODIFIED.
 2. BOTTOM SIDE OF THE PCB IS CONTINUOUS GROUND PLANE.
 DENOTES PCB COPPER LAYOUT WITH SMOBC (SOLDER MASK OVER BARE COPPER)
 DENOTES COPPER LAND PATTERN FREE OF SOLDER MASK

Features

- low conversion loss, 6.36 dB typ.
- aqueous washable
- J-leads for strain relief

Applications

- cellular
- satellite distribution
- VHF/UHF

LRMS-5HJ+ LRMS-5HJ



CASE STYLE: QQQ569
 PRICE: \$8.95 ea. QTY (1-9)

+ RoHS compliant in accordance with EU Directive (2002/95/EC)

The +Suffix identifies RoHS Compliance. See our web site for RoHS Compliance methodologies and qualifications.

Electrical Specifications

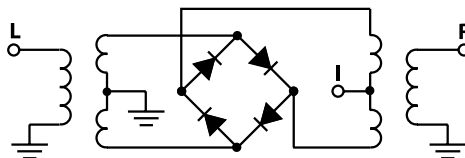
FREQUENCY (MHz)	CONVERSION LOSS (dB)	LO-RF ISOLATION (dB)			LO-IF ISOLATION (dB)			IP3 at center band (dBm)
		L	M	U	L	M	U	
LO/RF $f_L - f_U$	Mid-Band m Total Range \bar{X} σ Max.	Typ. Min.	Typ. Min.	Typ. Min.	Typ. Min.	Typ. Min.	Typ. Min.	Typ.
10-1500 DC-900	6.36 .05 8.0 9.8	65 40 36 20 22 15	50 30 30 18 17 7	22				

1 dB COMP.: +14 dBm typ. L = low range [f_L to $10 f_L$] M = mid range [$10 f_L$ to $f_U/2$] U = upper range [$f_U/2$ to f_U]
 m = mid band [$2 f_L$ to $f_U/2$]

Typical Performance Data

Frequency (MHz)		Conversion Loss (dB)	Isolation L-R (dB)	Isolation L-I (dB)	VSWR RF Port (:1)	VSWR LO Port (:1)
RF	LO	LO +17dBm	LO +17dBm	LO +17dBm	LO +17dBm	LO +17dBm
10.00	40.00	6.95	70.78	61.92	2.20	1.53
20.00	50.00	6.58	65.19	63.52	1.63	1.56
50.00	80.00	6.34	58.27	59.11	1.47	1.51
100.00	70.00	6.16	57.50	49.97	1.49	1.50
149.69	119.69	6.25	57.97	51.05	1.52	1.49
200.00	170.00	6.35	58.46	44.60	1.57	1.47
289.38	259.38	6.44	45.97	40.19	1.66	1.45
429.06	399.06	6.52	35.99	40.36	1.85	1.48
500.00	470.00	6.57	33.86	35.13	1.96	1.52
568.75	538.75	6.70	31.80	31.81	2.07	1.65
708.44	678.44	7.17	28.34	25.09	2.42	1.79
750.00	720.00	7.33	27.82	23.34	2.56	1.80
848.13	818.13	7.63	27.14	20.18	2.79	1.94
987.81	957.81	7.85	25.28	17.43	2.98	2.02
1000.00	970.00	7.86	25.09	16.91	3.00	2.12
1127.50	1097.50	7.96	23.28	14.89	3.16	2.21
1267.19	1237.19	8.09	21.51	13.36	3.15	2.57
1406.88	1376.88	8.10	20.40	11.73	2.97	2.82
1453.44	1423.44	8.28	20.09	11.57	2.99	2.97
1500.00	1470.00	8.50	19.62	11.46	2.94	3.15

Electrical Schematic



Mini-Circuits®

INTERNET <http://www.minicircuits.com>

P.O. Box 350166, Brooklyn, New York 11235-0003 (718) 934-4500 Fax (718) 332-4661

Distribution Centers NORTH AMERICA 800-654-7949 • 417-335-5935 • Fax 417-335-5945 • EUROPE 44-1252-832600 • Fax 44-1252-837010

Mini-Circuits ISO 9001 & ISO 14001 Certified



REV. A
 M98898
 LRMS-5HJ
 DJ/FL/CP
 060316
 Page 1 of 2

Performance Charts

LRMS-5HJ+ LRMS-5HJ

