

# Surface Mount Frequency Mixer

Level 7 (LO Power +7dBm) 5 to 1500 MHz

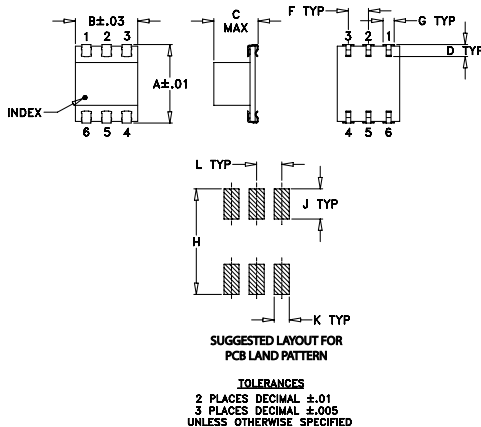
## Maximum Ratings

Operating Temperature	-40°C to 85°C
Storage Temperature	-55°C to 100°C
RF Power	50mW
IF Current	40mA

## Pin Connections

LO	1
RF	4
IF	5
GROUND	2,3,6

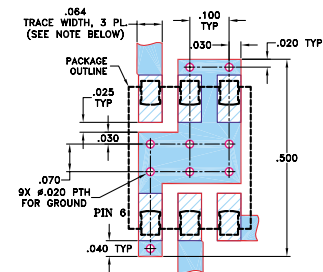
## Outline Drawing



## Outline Dimensions (inch)

A	B	C	D	E	F	G
.390	.31	.225	.060	---	.100	.045
9.91	7.87	5.72	1.52	---	2.54	1.14
H	J	K	L	M		wt
.420	.120	.060	.100	---		grams
10.67	3.05	1.52	2.54	---		0.50

## Demo Board MCL P/N: TB-44 Suggested PCB Layout (PL-083)



NOTES: 1. TRACE WIDTH IS SHOWN FOR ROGERS RO4350B WITH DIELECTRIC THICKNESS 0.030" ± 0.002"; COPPER: 1/2 OZ. EACH SIDE. FOR OTHER MATERIALS TRACE WIDTH MAY NEED TO BE MODIFIED.  
2. BOTTOM SIDE OF THE PCB IS CONTINUOUS GROUND PLANE.  
DENOTES PCB COPPER LAYOUT WITH SMOBC (SOLDER MASK OVER BARE COPPER)  
DENOTES COPPER LAND PATTERN FREE OF SOLDER MASK

## Features

- low conversion loss, 5.92 dB typ.
- excellent L-R isolation, 40 dB typ.
- aqueous washable
- J-leads for strain relief

## Applications

- VHF/UHF
- satellite distribution
- cellular



CASE STYLE: QQQ569  
PRICE: \$13.95 ea. QTY (1-9)

+ RoHS compliant in accordance with EU Directive (2002/95/EC)

The +Suffix identifies RoHS Compliance. See our web site for RoHS Compliance methodologies and qualifications.

## Electrical Specifications

FREQUENCY (MHz)		CONVERSION LOSS (dB)				LO-RF ISOLATION (dB)						LO-IF ISOLATION (dB)						IP3 at center band (dBm)
LO/RF $f_L$ - $f_U$	IF	Mid-Band $m$			Total Range Max.	L		M		U		L		M		U		
		$\bar{X}$	$\sigma$	Max.		Typ.	Min.	Typ.	Min.	Typ.	Min.	Typ.	Min.	Typ.	Min.			
																	Typ.	
5-1500	DC-1000	5.92	.34	7.5	9.5	60	40	40	20	30	18	55	30	30	18	15	8	12

1 dB COMP.: +1 dBm typ.

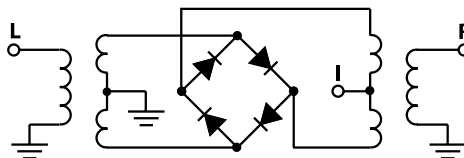
L = low range [ $f_L$  to 10  $f_L$ ]  
m= mid band [ $2f_L$  to  $f_U/2$ ]

M = mid range [10  $f_L$  to  $f_U/2$ ]  
U = upper range [ $f_U/2$  to  $f_U$ ]

## Typical Performance Data

Frequency (MHz)		Conversion Loss (dB)	Isolation L-R (dB)	Isolation L-I (dB)	VSWR RF Port (:1)	VSWR LO Port (:1)
RF	LO	LO +7dBm	LO +7dBm	LO +7dBm	LO +7dBm	LO +7dBm
5.00	35.00	6.17	78.28	82.08	2.64	2.43
10.00	40.00	6.03	73.09	75.39	1.62	2.43
20.00	50.00	5.86	67.43	67.33	1.37	2.37
50.00	80.00	5.46	60.16	61.16	1.27	2.46
100.00	70.00	5.31	53.66	53.86	1.29	2.38
149.68	119.68	5.33	50.07	50.77	1.34	2.33
200.00	170.00	5.37	47.54	48.24	1.40	2.28
246.13	216.13	5.54	45.92	48.66	1.48	2.29
342.58	312.58	5.71	43.07	48.72	1.68	2.29
439.03	409.03	5.77	40.76	43.78	1.93	2.33
500.00	470.00	5.97	39.74	38.41	2.10	2.41
583.71	553.71	6.25	39.21	33.19	2.36	2.48
680.16	650.16	6.55	38.34	29.32	2.71	2.69
750.00	720.00	6.89	37.60	26.77	2.92	2.80
873.07	843.07	7.45	36.91	21.63	3.32	3.09
1000.00	970.00	7.70	35.50	18.14	3.56	3.20
1114.19	1084.19	7.76	33.72	16.32	3.69	3.18
1210.65	1180.65	8.02	32.50	14.96	3.73	3.19
1355.32	1325.32	8.41	30.92	13.25	3.75	3.12
1500.00	1470.00	8.83	28.64	12.28	3.83	2.98

## Electrical Schematic



**Mini-Circuits®**

INTERNET <http://www.minicircuits.com>

P.O. Box 350166, Brooklyn, New York 11235-0003 (718) 934-4500 Fax (718) 332-4661

Distribution Centers NORTH AMERICA 800-654-7949 • 417-335-5935 • Fax 417-335-5945 • EUROPE 44-1252-832600 • Fax 44-1252-837010

Mini-Circuits ISO 9001 & ISO 14001 Certified



REV. A  
M98898  
LRMS-5J  
DJ/FL/CP  
060315  
Page 1 of 2

## Performance Charts

