

High IP3 Active Mixer

MAX-9H

Level 0 (LO Power +0 dBm) 810 to 930 MHz

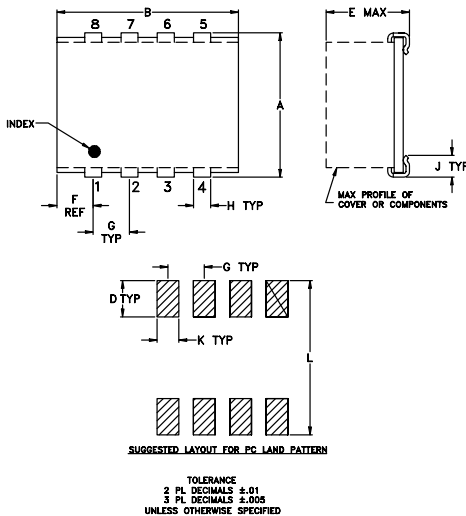
Maximum Ratings

Operating Temperature	-40°C to 85°C
Storage Temperature	-55°C to 100°C
LO Power	10 dBm
RF Power	15 dBm
DC Voltage	+5.5V

Pin Connections

LO	1
RF	3
IF	5
DC	7
GROUND	2,4,6,8

Outline Drawing



Outline Dimensions (inch/mm)

A	B	C	D	E	F	G
.395	.520	--	.100	.230	.110	.100
10.03	13.21	--	2.54	5.84	2.79	2.54

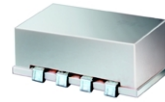
H	J	K	L	wt
.047	.065	.065	.425	grams
1.19	1.65	1.65	10.80	0.85

Features

- low LO power, 0 dBm
- gain, 9 dB typ.
- output IP3, 33 dBm typ.
- noise figure, 9 dB typ.
- patent pending

Applications

- GSM
- DCS/PCS



CASE STYLE: BJ937
PRICE: \$19.95 ea. QTY (10)

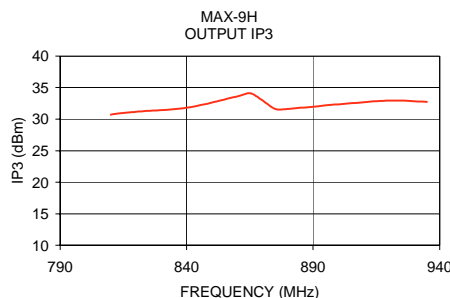
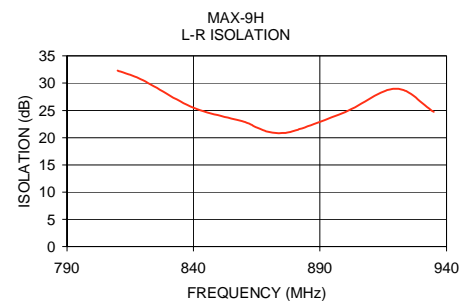
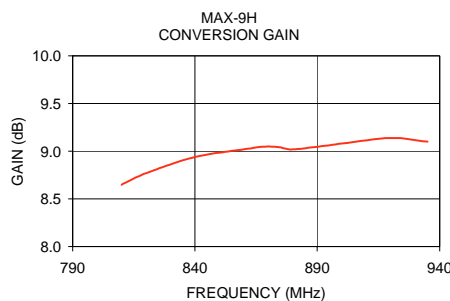
Electrical Specifications (T_{AMB}=25°C)

FREQUENCY (MHz)			OUTPUT IP3 (dBm)	RF INPUT @ 1dB compr. (dBm)	CONVERSION GAIN (dB)		NOISE FIGURE (dB)	LO-RF ISOL. (dB)		LO-IF* ISOL. (dB)		DC POWER Current	
RF	LO	IF			Min.	Max.		Typ.	Min.	Typ.	Min.	Volt	Max.
810-930	570-675	240-260	33	8	8	11	11	22	10	2	—	5	165

*LO to IF isolation is measured at input to LO internal amplifier and at output of internal IF amplifier.
To improve rejection, select filter from LFCN or HFCN series.

Typical Performance Data

Frequency		Conversion	L-R	Output
RF	LO	Gain	Isolation	IP3
MHz	MHz	(dB)	(dB)	(dBm)
810.00	563.00	8.65	32.33	30.73
820.00	573.00	8.77	30.54	31.17
840.00	593.00	8.94	25.49	31.81
860.00	613.00	9.02	22.92	33.59
865.00	618.00	9.04	21.85	34.12
870.00	623.00	9.05	21.01	32.97
875.00	628.00	9.04	20.84	31.60
880.00	633.00	9.02	21.27	31.61
900.00	653.00	9.08	24.70	32.34
920.00	673.00	9.14	28.99	32.93
935.00	688.00	9.10	24.71	32.73



electrical schematic

