

Surface Mount Frequency Mixer

Level 10 (LO Power +10 dBm) 2200 to 3600 MHz

MBA-25LH+
MBA-25LH



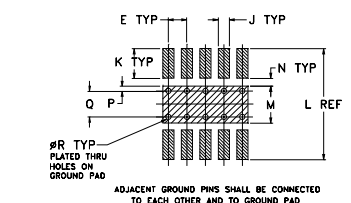
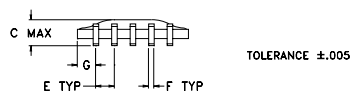
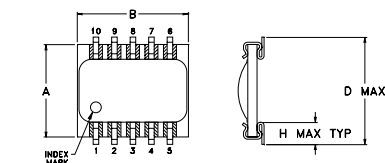
Maximum Ratings

Operating Temperature	-40°C to 85°C
Storage Temperature	-55°C to 100°C
RF Power	50mW
IF Current	40mA

Pin Connections

LO	10
RF	5
IF	3
GROUND	1,2,4,6,7,8,9

Outline Drawing

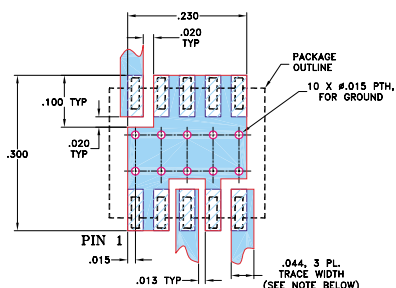


SUGGESTED LAYOUT FOR PCB PATTERN

Outline Dimensions (inch mm)

A	B	C	D	E	F	G	H	
.250	.300	.070	.290	.050	.015	.050	.060	
6.35	7.62	1.78	7.37	1.27	0.38	1.27	1.52	
J	K	L	M	N	P	Q	R	wt
.030	.080	.300	.100	.020	.015	.070	.014	grams
0.76	2.03	7.62	2.54	0.51	0.38	1.78	0.36	0.3

Demo Board MCL P/N: TB-99
Suggested PCB Layout (PL-066)



- NOTES: 1. TRACE WIDTH IS SHOWN FOR ROGERS RO4350B WITH DIELECTRIC THICKNESS 0.020" ± 0.0015". COPPER: 1/2 OZ. EACH SIDE. FOR OTHER MATERIALS TRACE WIDTH MAY NEED TO BE MODIFIED.
2. BOTTOM SIDE OF THE PCB IS CONTINUOUS GROUND PLANE.
- DENOTES PCB COPPER LAYOUT WITH SMOBC (SOLDER MASK OVER BARE COPPER)
- DENOTES COPPER LAND PATTERN FREE OF SOLDER MASK

Features

- excellent temperature stability
- excellent performance repeatability
- leads with strain relief
- very low cost
- ultra low height, 0.07"
- protected by US Patent 5,534,830

Applications

- PCN/PCS/wideband CDMA
- satellite communication
- wireless local loop
- WLAN
- GPS
- PCMCIA

CASE STYLE: SM2
PRICE: \$6.95 ea. QTY (10-49)

+ RoHS compliant in accordance with EU Directive (2002/95/EC)

The +Suffix identifies RoHS Compliance. See our web site for RoHS Compliance methodologies and qualifications.

Electrical Specifications

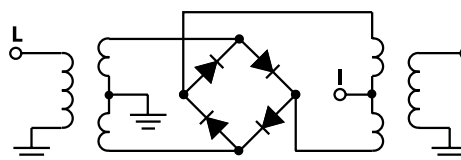
FREQUENCY (MHz)		CONVERSION LOSS (dB)			LO-RF ISOLATION (dB)		LO-IF ISOLATION (dB)		IP3 at center band (dBm)
LO/RF	IF	\bar{X}	σ	Max.	Typ.	Min.	Typ.	Min.	
2200-3600	DC-500	7.0	0.1	9.2	32	21	20	10	12

1 dB COMP.: +4 dBm typ.

Typical Performance Data

Frequency (MHz)		Conversion Loss (dB)	Isolation L-R (dB)	Isolation L-I (dB)	VSWR LO Port (:1)	VSWR RF Port (:1)
RF	LO	LO +10dBm	LO +10dBm	LO +10dBm	LO +10dBm	LO +10dBm
2200.00	2230.00	7.89	27.70	12.40	2.30	2.92
2300.00	2330.00	7.72	28.80	13.80	2.25	2.65
2400.00	2430.00	7.51	31.00	15.70	2.20	2.37
2427.50	2457.50	7.44	32.00	16.40	2.01	2.35
2500.00	2530.00	7.20	34.60	18.20	2.10	2.20
2560.00	2590.00	6.95	36.70	19.50	2.27	2.14
2600.00	2630.00	6.88	37.10	20.80	2.01	2.08
2692.50	2722.50	6.83	32.20	23.10	1.97	1.85
2700.00	2730.00	6.87	32.10	23.00	1.99	1.82
2800.00	2830.00	6.88	30.50	25.40	1.94	1.59
2825.00	2855.00	7.05	30.10	26.50	1.92	1.52
2900.00	2930.00	7.16	30.80	29.90	1.87	1.34
2957.00	2987.00	7.23	32.10	32.50	1.89	1.20
3000.00	3030.00	7.24	32.60	33.00	1.89	1.13
3090.00	3120.00	7.21	34.10	28.80	1.91	1.03
3200.00	3230.00	7.02	36.60	23.90	2.20	1.13
3222.50	3252.50	6.98	37.00	22.90	2.18	1.15
3355.00	3385.00	7.08	37.00	20.20	1.96	1.33
3400.00	3430.00	6.97	35.80	18.90	2.08	1.40
3600.00	3630.00	7.07	33.00	16.00	1.75	1.59

Electrical Schematic



Mini-Circuits®

INTERNET <http://www.minicircuits.com>

P.O. Box 350166, Brooklyn, New York 11235-0003 (718) 934-4500 Fax (718) 332-4661

Distribution Centers NORTH AMERICA 800-654-7949 • 417-335-5935 • Fax 417-335-5945 • EUROPE 44-1252-832600 • Fax 44-1252-837010

Mini-Circuits ISO 9001 & ISO 14001 Certified



REV. B
M98898
MBA-25LH
EE-7756/12
060327
Page 1 of 2

Performance Charts

MBA-25LH+ MBA-25LH

