

# Ceramic Frequency Mixer

Level 17 (LO Power+17 dBm) 3500 to 3600 MHz

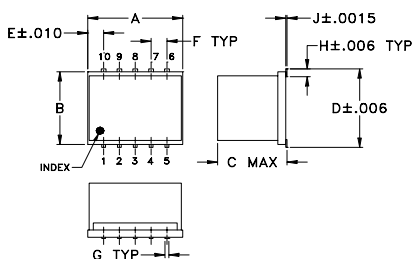
## Maximum Ratings

Operating Temperature	-55°C to 100°C
Storage Temperature	-55°C to 100°C
LO & RF Power	20 dBm

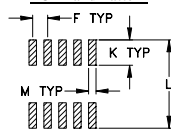
## Pin Connections

LO	10
RF	5
IF	3
GROUND	1,2,4,6,7,8,9

## Outline Drawing



### PCB Land Pattern



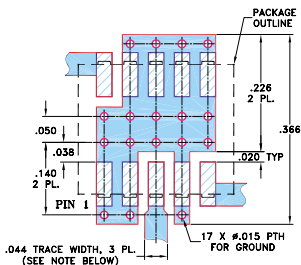
Suggested Layout,  
Tolerance to be within ±.002

## Outline Dimensions (inch/mm)

A	B	C	D	E	F	G
.30	.250	.190	.262	.050	.050	.012
7.62	6.35	4.83	6.66	1.27	1.27	0.30
H	J	K	L	M		wt
.027	.004	.085	.296	.030		grams
0.69	0.10	2.16	7.52	0.76		0.5

## Demo Board MCL P/N: TB-144

### Suggested PCB Layout (PL-045)



- NOTES: 1. TRACE WIDTH IS SHOWN FOR ROGERS RO4350B WITH DIELECTRIC THICKNESS .020" ± .0015"; COPPER: 1/2 OZ. EACH SIDE. FOR OTHER MATERIALS TRACE WIDTH MAY NEED TO BE MODIFIED.  
2. BOTTOM SIDE OF THE PCB IS CONTINUOUS GROUND PLANE.
- DENOTES PCB COPPER LAYOUT WITH SMOBC (SOLDER MASK OVER BARE COPPER)  
■ DENOTES COPPER LAND PATTERN FREE OF SOLDER MASK

## Features

- excellent IP3, 33 dBm typ.
- excellent L-R isolation, 44 dB typ.
- excellent 1dB compression, RF>LO power
- industry standard foot print
- LTCC design for excellent temperature stability performance repeatability and small size
- aqueous washable
- double balanced mixer
- low price
- protected by US Patent 6,959,180

## Applications

- line of sight links
- satellite communications



CASE STYLE: DZ883

PRICE: \$11.95 ea. QTY.(1-9)

**+ RoHS compliant in accordance with EU Directive (2002/95/EC)**

The +Suffix identifies RoHS Compliance. See our web site for RoHS Compliance methodologies and qualifications.

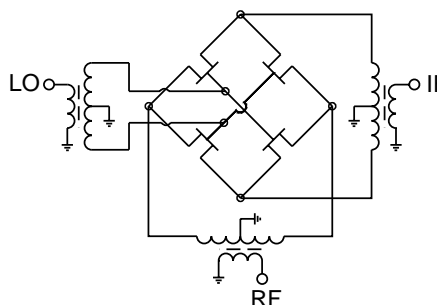
## Electrical Specifications (T<sub>AMB</sub>=-55°C to 100°C)

FREQUENCY (MHz)			IP3 (dBm)	RF in at 1 dB compr. (dBm)	CONVERSION LOSS (dB)		LO-RF ISOLATION (dB)		LO-IF ISOLATION (dB)	
RF	LO	IF	Typ.	Min.	Typ	Max.	Typ	Min.	Typ	Min.
3500-3600	3070-3170	380-480	33	17	8.3	9.2	44	20	29	15

## Typical Performance Data

Frequency (MHz)		Conversion Loss (dB)	Isolation L-R (dB)	Isolation L-I (dB)	VSWR RF Port (:1)	VSWR LO Port (:1)	IP3 (dBm)
RF	LO	LO +17dBm	LO +17dBm	LO +17dBm	LO +17dBm	LO +17dBm	LO +17dBm
3500.00	3070.00	7.59	45.92	24.67	2.28	3.64	32.03
3510.00	3080.00	7.73	44.66	25.03	2.46	3.78	32.45
3520.00	3090.00	8.10	44.30	25.49	2.65	3.82	34.10
3530.00	3100.00	8.11	45.26	26.04	2.84	3.70	32.67
3540.00	3110.00	8.00	46.98	26.41	3.00	3.62	32.06
3550.00	3120.00	8.07	47.77	26.73	3.14	3.57	33.59
3560.00	3130.00	7.93	49.60	26.97	3.30	3.54	33.95
3570.00	3140.00	7.42	54.93	27.26	3.49	3.60	32.32
3580.00	3150.00	7.14	55.81	27.70	3.75	3.71	32.46
3590.00	3160.00	7.37	52.08	28.30	4.02	3.74	32.93
3600.00	3170.00	7.62	50.58	28.99	4.37	3.75	32.34

## Electrical Schematic



**Mini-Circuits®**

INTERNET <http://www.minicircuits.com>

P.O. Box 350166, Brooklyn, New York 11235-0003 (718) 934-4500 Fax (718) 332-4661

Distribution Centers NORTH AMERICA 800-654-7949 • 417-335-5935 • Fax 417-335-5945 • EUROPE 44-1252-832600 • Fax 44-1252-837010

Mini-Circuits ISO 9001 & ISO 14001 Certified



REV. D  
M98898  
ED-9488C/2  
MCA-36FH  
DJ/TD/CP  
060420  
Page 1 of 2

## Performance Charts

# MCA-36FH+ MCA-36FH

