

Ceramic

# Frequency Mixer WIDE BAND

Level 13 (LO Power+13 dBm) 1000 to 5000 MHz

## MCA-50MH+ MCA-50MH



### Maximum Ratings

Operating Temperature	-55°C to 100°C
Storage Temperature	-55°C to 100°C
RF Power	200 mW
IF Current	40 mA

### Pin Connections

LO	10
RF	5
IF	3
GROUND	1,2,4,6,7,8,9

### Features

- wide bandwidth, 1000 to 5000 MHz
- good L-R isolation, 25 dB typ.; L-I isolation, 30 dB typ.
- small size 0.25"x0.3"x0.2"
- aqueous washable
- triple balanced mixer
- protected by US Patent 6,917,796

CASE STYLE: DZ883

PRICE: \$8.95 ea. QTY.(10-49)

**+ RoHS compliant in accordance  
with EU Directive (2002/95/EC)**

The +Suffix identifies RoHS Compliance. See our web site  
for RoHS Compliance methodologies and qualifications.

### Applications

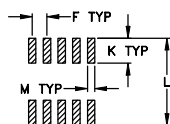
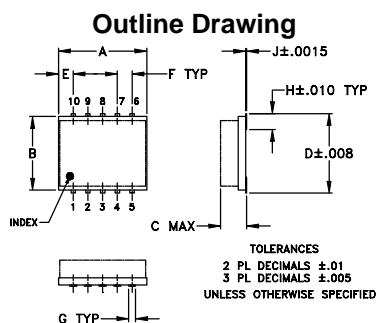
- PCN
- satellite
- line of sight links

### Electrical Specifications (T<sub>AMB</sub>=-55°C to 100°C)

FREQUENCY (MHz)		CONVERSION LOSS (dB)			LO-RF ISOLATION (dB)		LO-IF ISOLATION (dB)		IP3 at center band (dBm)
LO/RF f <sub>L</sub> -f <sub>U</sub>	IF	$\bar{X}$	$\sigma$	Max.	Typ.	Min.	Typ.	Min.	
<b>1000-5000</b>	<b>10-1500</b>	<b>7.3</b>	<b>0.2</b>	<b>9.9</b>					
1000-1400	10-400	6.2	0.1	7.8	20	11	32	25	20
1400-2000	10-600	6.0	0.1	7.7	34	20	28	20	21
2000-2600	10-600	7.8	0.1	9.9	25	18	28	20	21
2600-4500	10-1500	6.6	0.1	8.6	39	22	30	20	18
4500-5000	50-500	7.3	0.2	8.9	35	22	30	20	21

1 dB COMPR. +9 dBm typ.

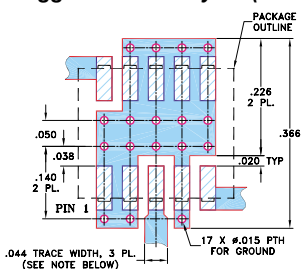
• see individual band specs



### Outline Dimensions (inches)

A	B	C	D	E	F	G
.30	.250	.190	.274	.050	.050	.012
7.62	6.35	4.83	6.96	1.27	1.27	0.30
H	J	K	L	M		wt
.057	.004	.085	.296	.030		grams
1.45	0.10	2.16	7.52	0.76		0.5

### Demo Board MCL P/N: TB-144 Suggested PCB Layout (PL-045)

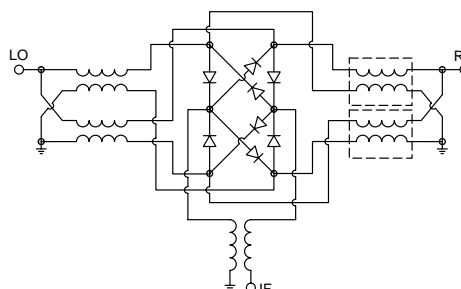


- NOTES: 1. TRACE WIDTH IS SHOWN FOR ROGERS RO4350B WITH DIELECTRIC THICKNESS .020" ± .0015"; COPPER: 1/2 OZ. EACH SIDE. FOR OTHER MATERIALS TRACE WIDTH MAY NEED TO BE MODIFIED.
2. BOTTOM SIDE OF THE PCB IS CONTINUOUS GROUND PLANE.
- DENOTES PCB COPPER LAYOUT WITH SMOBC (SOLDER MASK OVER BARE COPPER)
- DENOTES COPPER LAND PATTERN FREE OF SOLDER MASK

### Typical Performance Data

Frequency (MHz)		Conversion Loss (dB)	Isolation L-R (dB)	Isolation L-I (dB)	VSWR RF Port (:1)	VSWR LO Port (:1)
RF	LO	LO +13dBm	LO +13dBm	LO +13dBm	LO +13dBm	LO +13dBm
1000.10	1030.10	6.43	16.42	31.37	1.28	2.13
1100.10	1130.10	5.97	18.64	31.89	1.17	2.23
1400.10	1430.10	5.91	30.08	31.47	1.23	2.49
1500.10	1530.10	5.76	34.43	31.25	1.26	2.39
1600.10	1630.10	5.78	39.11	31.37	1.28	2.25
1800.10	1830.10	6.04	39.49	29.65	1.42	2.06
2000.10	2030.10	6.32	28.14	28.64	1.53	2.12
2300.10	2330.10	8.66	23.59	25.91	1.90	1.97
2500.10	2530.10	7.82	24.04	27.43	1.78	2.12
2700.10	2730.10	7.15	28.71	30.07	1.63	2.12
3000.10	3030.10	6.26	33.02	28.73	1.61	1.50
3300.10	3330.10	5.97	41.64	28.07	1.75	1.33
3500.10	3530.10	6.06	44.84	29.22	1.82	1.03
3600.10	3630.10	6.03	56.06	28.90	1.80	1.05
3800.10	3830.10	5.91	40.61	30.53	1.79	1.22
4000.10	4030.10	6.53	35.57	34.07	1.78	1.11
4300.10	4330.10	7.10	39.56	33.74	2.07	1.60
4500.10	4530.10	6.95	40.10	31.97	2.08	2.10
4800.10	4830.10	7.36	29.20	28.90	1.59	2.02
5000.10	5030.10	7.14	32.79	30.33	1.57	1.61

### Electrical Schematic



## Mini-Circuits®

INTERNET <http://www.minicircuits.com>

P.O. Box 350166, Brooklyn, New York 11235-0003 (718) 934-4500 Fax (718) 332-4661

Distribution Centers NORTH AMERICA 800-654-7949 • 417-335-5935 • Fax 417-335-5945 • EUROPE 44-1252-832600 • Fax 44-1252-837010

Mini-Circuits ISO 9001 &amp; ISO 14001 Certified



REV. E  
M98898  
ED-9595B/2  
MCA-50MH  
DJ/TD/CP  
060322  
Page 1 of 2

# Performance Charts

## MCA-50MH+ MCA-50MH

