

Low Pass Filter

NBLP-200

50Ω Flat Time Delay DC to 120 MHz

Maximum Ratings

Operating Temperature	-55°C to 100°C
Storage Temperature	-55°C to 100°C
RF Power Input	0.5W max.

Features

- flat group delay for low pulse distortion
- rugged shielded case
- other NBLP models available with wide selection of cut-off frequencies

Applications

- linear modulation techniques
- voice transmission applications
- digital communications



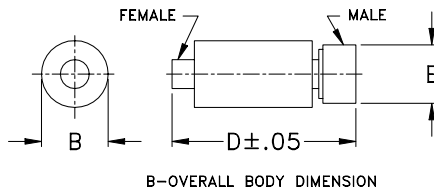
CASE STYLE: FF57

Connectors	Model	Price	Qty.
N-Type	NBLP-200	\$39.95 ea.	(1-9)

Low Pass Filter Electrical Specifications

PASSBAND (MHz)	fco, MHz Nom.	STOPBAND (MHz)		VSWR (:1)		GROUP DELAY VARIATION (nsec)		
		(loss < 1.2 dB) Min.	(loss > 10 dB) (loss > 20 dB)	DC-0.2fco \bar{X}	DC-0.6fco \bar{X}	DC-fco \bar{X}	DC-2fco \bar{X}	DC-2.67fco \bar{X}
DC-120	200		400-534 534	1.6:1	1.9:1	0.4	1.3	1.6

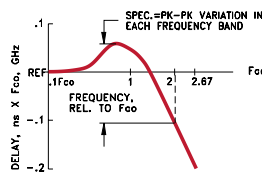
Outline Drawing



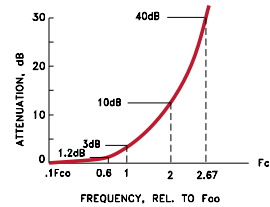
Outline Dimensions (inch/mm)

B	D	E	wt
.67	2.90	.82	grams
17.02	73.66	20.83	90.0

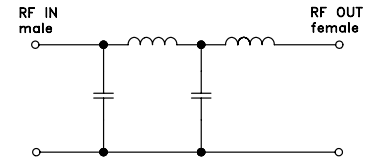
TYPICAL GROUP DELAY



TYPICAL FREQUENCY RESPONSE INSERTION LOSS



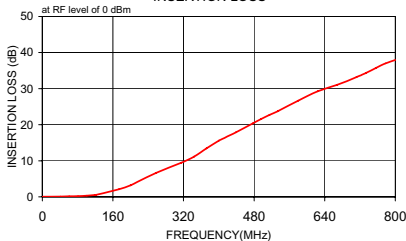
electrical schematic



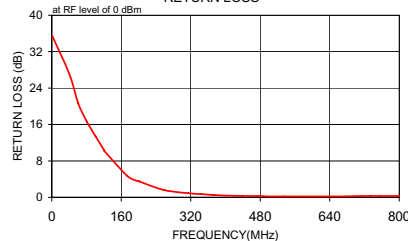
Typical Performance Data

Frequency (MHz)	Insertion Loss (dB)		Return Loss (dB)	Frequency (MHz)	Group Delay (nsec)
	\bar{X}	σ			
1.0	0.04	0.1	35.5	1.0	1.829
41.0	0.10	0.1	27.0	1.0	1.915
61.0	0.16	0.1	20.6	41.0	2.140
81.0	0.22	0.1	16.6	61.0	2.006
101.0	0.33	0.1	13.4	81.0	2.109
120.0	0.52	0.1	10.4	101.0	2.087
121.0	0.53	0.1	10.2	120.0	2.170
174.0	2.10	0.1	4.7	121.0	2.113
200.0	3.22	0.1	3.5	148.0	2.521
201.0	3.26	0.1	3.5	174.0	2.169
258.0	6.65	0.2	1.6	200.0	1.964
315.0	9.45	0.2	0.9	201.0	2.367
344.0	11.17	0.3	0.7	230.0	1.912
372.0	13.45	0.4	0.5	258.0	1.485
400.0	15.58	0.5	0.4	287.0	1.356
401.0	15.65	0.5	0.4	315.0	2.048
439.0	17.90	0.7	0.3	344.0	2.142
477.0	20.36	0.8	0.3	372.0	1.206
496.0	21.60	0.8	0.2	400.0	0.894
515.0	22.72	0.9	0.2	401.0	1.205
534.0	23.75	0.9	0.2	420.0	1.143
535.0	23.81	0.9	0.2	439.0	0.984
580.0	26.67	1.0	0.2	458.0	1.412
624.0	29.26	1.0	0.2	477.0	0.888
668.0	31.05	1.1	0.2	496.0	0.903
712.0	33.19	1.2	0.3	515.0	1.244
734.0	34.36	1.2	0.3	534.0	1.282
756.0	35.72	1.2	0.3	535.0	0.796
778.0	37.00	1.2	0.3	558.0	1.491
800.0	37.94	1.1	0.3	580.0	0.941

INSERTION LOSS



RETURN LOSS



GROUP DELAY

