

Low Pass Filter

NLP-150

50Ω DC to 140 MHz

Maximum Ratings

Operating Temperature	-55°C to 100°C
Storage Temperature	-55°C to 100°C
RF Power Input	0.5W max.

Features

- rugged shielded case
- other NLP models available with wide selection of cut-off frequencies



Applications

- lab use
- test equipment
- video equipment

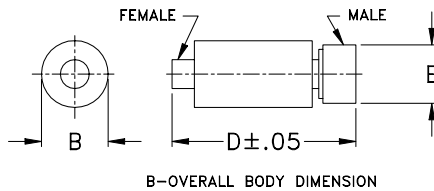
CASE STYLE: FF57

Connectors	Model	Price	Qty.
N-Type	NLP-150	\$35.95 ea.	(1-9)

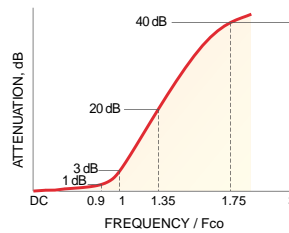
Low Pass Filter Electrical Specifications

PASSBAND (MHz)	fco (MHz) Nom.	STOPBAND (MHz)	VSWR (:1)
(loss < 1 dB)	(loss 3 dB)	(loss > 20 dB) (loss > 40 dB)	Passband Typ. Stopband Typ.
DC-140	155	210-300 300-600	1.7 18

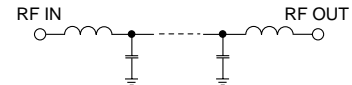
Outline Drawing



typical frequency response



electrical schematic



Typical Performance Data

Frequency (MHz)	Insertion Loss (dB)	Return Loss (dB)	Frequency (MHz)	Group Delay (nsec)
	\bar{x} σ			
10.00	0.12 0.1	21.7	10.00	5.875
50.00	0.20 0.0	18.9	30.00	5.932
70.00	0.19 0.1	31.6	50.00	6.124
87.50	0.30 0.1	18.1	70.00	6.723
107.50	0.34 0.1	19.0	87.50	6.973
127.50	0.43 0.1	21.2	107.50	7.940
140.00	0.59 0.1	18.5	127.50	9.564
147.50	1.11 0.1	11.0	140.00	11.710
155.00	3.27 0.2	4.3	145.00	13.582
165.00	9.15 0.4	1.2	147.50	14.703
180.00	18.50 0.6	0.4	150.00	15.571
195.03	26.35 0.7	0.2	155.00	15.775
200.03	28.70 0.7	0.2	165.00	10.701
205.00	30.89 0.7	0.2	170.00	8.263
210.03	33.01 0.8	0.2	180.00	5.337
220.04	36.90 0.8	0.1	190.00	3.934
240.04	43.83 0.9	0.1	195.00	3.242
260.05	49.92 1.3	0.1	200.00	3.185
270.05	52.20 1.9	0.1	205.00	2.751
290.06	57.13 1.7	0.1	210.00	2.474
300.00	59.12 2.5	0.1	220.00	2.061
320.00	64.42 3.7	0.1	230.00	1.548
360.00	69.97 6.8	0.1	240.00	0.945
462.50	71.43 5.2	0.1	250.00	0.617
502.50	74.26 2.1	0.1	260.00	2.736
522.50	72.73 2.6	0.1	270.00	2.100
540.00	72.69 4.1	0.1	290.00	2.428
560.00	72.65 5.6	0.0	300.00	2.217
590.00	76.20 9.3	0.1	320.00	2.006
600.00	70.55 3.8	0.1	350.00	1.977

Outline Dimensions ()

B	D	E	wt
.67	2.90	.82	grams
17.02	73.66	20.83	90.0

