

Low Pass Filter

NLP-250

50Ω DC to 225 MHz

Maximum Ratings

| | |
|-----------------------|----------------|
| Operating Temperature | -55°C to 100°C |
| Storage Temperature | -55°C to 100°C |
| RF Power Input | 0.5W max. |

Features

- rugged shielded case
- other NLP models available with wide selection of cut-off frequencies



Applications

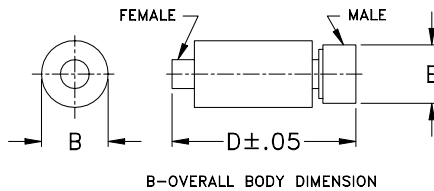
- lab use
- test equipment
- video equipment

| | | | |
|------------------|---------|-------------|-------|
| CASE STYLE: FF57 | | | |
| Connectors | Model | Price | Qty. |
| N-Type | NLP-250 | \$35.95 ea. | (1-9) |

Low Pass Filter Electrical Specifications

| PASSBAND (MHz) | fco (MHz) Nom. | STOPBAND (MHz) | | VSWR (:1) | |
|----------------|----------------|----------------|----------------|---------------|---------------|
| (loss < 1 dB) | (loss 3 dB) | (loss > 20 dB) | (loss > 40 dB) | Passband Typ. | Stopband Typ. |
| DC-225 | 250 | 320-400 | 400-1200 | 1.7 | 18 |

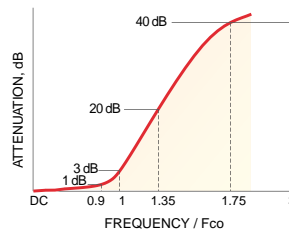
Outline Drawing



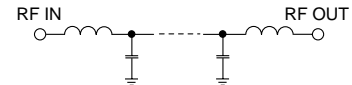
Outline Dimensions (inch/mm)

| B | D | E | wt |
|-------|-------|-------|-------|
| .67 | 2.90 | .82 | grams |
| 17.02 | 73.66 | 20.83 | 90.0 |

typical frequency response



electrical schematic



Typical Performance Data

| Frequency (MHz) | Insertion Loss (dB) | Return Loss (dB) | Frequency (MHz) | Group Delay (nsec) |
|-----------------|---------------------|------------------|-----------------|--------------------|
| \bar{x} | σ | | | |
| 10.00 | 0.03 | 0.1 | 10.00 | 3.54 |
| 20.00 | 0.03 | 0.1 | 20.00 | 3.66 |
| 80.00 | 0.20 | 0.1 | 80.00 | 3.78 |
| 100.00 | 0.28 | 0.1 | 100.00 | 3.80 |
| 165.00 | 0.27 | 0.1 | 165.00 | 4.63 |
| 217.50 | 0.60 | 0.1 | 217.50 | 6.37 |
| 225.00 | 0.64 | 0.1 | 225.00 | 7.25 |
| 240.00 | 1.59 | 0.3 | 230.00 | 8.00 |
| 250.00 | 3.87 | 0.6 | 240.00 | 9.42 |
| 260.00 | 7.27 | 0.9 | 245.00 | 9.37 |
| 280.00 | 14.62 | 1.0 | 250.00 | 8.91 |
| 300.00 | 21.27 | 1.1 | 260.00 | 6.90 |
| 310.00 | 24.28 | 1.2 | 270.00 | 5.18 |
| 315.00 | 25.71 | 1.2 | 280.00 | 3.91 |
| 320.00 | 27.12 | 1.3 | 290.00 | 3.02 |
| 330.00 | 29.77 | 1.3 | 300.00 | 2.66 |
| 350.00 | 34.87 | 1.6 | 310.00 | 2.33 |
| 370.00 | 39.35 | 1.9 | 315.00 | 2.14 |
| 380.00 | 41.63 | 2.0 | 320.00 | 1.98 |
| 390.00 | 43.91 | 2.3 | 330.00 | 2.13 |
| 400.00 | 46.09 | 2.7 | 340.00 | 1.53 |
| 580.00 | 69.80 | 3.0 | 350.00 | 1.30 |
| 682.50 | 69.02 | 1.5 | 360.00 | 1.37 |
| 785.00 | 69.27 | 2.4 | 370.00 | 1.15 |
| 890.00 | 69.72 | 4.5 | 380.00 | 1.78 |
| 992.50 | 70.16 | 5.1 | 390.00 | 0.46 |
| 1045.00 | 73.29 | 6.6 | 400.00 | 0.27 |
| 1097.50 | 70.40 | 5.6 | 580.00 | 0.25 |
| 1147.50 | 71.08 | 3.9 | 630.00 | 0.20 |
| 1200.00 | 71.31 | 2.1 | 682.50 | 0.20 |

