

Plug-In

# Bandpass Filter

50Ω Constant Impedance 25 to 35 MHz

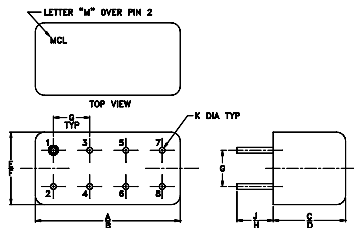
## Maximum Ratings

Operating Temperature	-55°C to 100°C
Storage Temperature	-55°C to 100°C
RF Power Input	0.5W max.

## Pin Connections

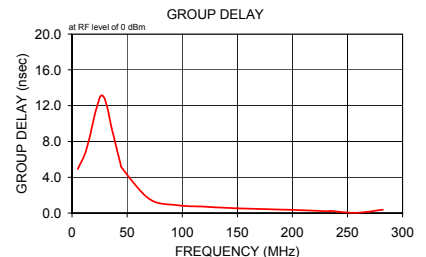
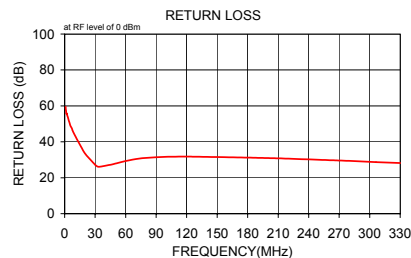
INPUT	1
OUTPUT	6
GROUND	2,3,4,5,7,8
CASE GROUND	2,5,7,8

## Outline Drawing



## Outline Dimensions (inch/mm)

A	B	C	D	E	F
.770	.800	.385	.400	.370	.400
19.56	20.32	9.78	10.16	9.40	10.16
G	H	J	K	wt	
.200	.20	.14	.031		grams
5.08	5.08	3.56	0.79		5.2



## Features

- low VSWR in pass & stopbands, 1.3:1 typ.
- shielded welded case, hermetically sealed
- custom designs available

## Applications

- harmonic rejection
- lab use
- military/hi-rel applications

PIF-30+  
PIF-30



CASE STYLE: A01  
PRICE: \$17.20 ea. QTY: 1-9

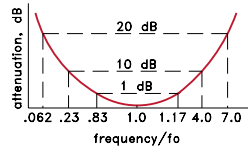
+ RoHS compliant in accordance with EU Directive (2002/95/EC)

The +Suffix identifies RoHS Compliance. See our web site for RoHS Compliance methodologies and qualifications.

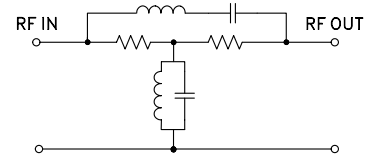
## Bandpass Filter Electrical Specifications

MODEL NO.	CENTER FREQ. (MHz)	PASSBAND (MHz)	STOPBANDS	VSWR, 1.3:1 Typ. TOTAL BAND (MHz)
		(loss < 1 dB)	(loss > 10 dB) at MHz (loss > 20 dB) at MHz	
PIF-30	30	25-35	7 & 120 1.9 & 210	DC-330

## typical frequency response



## electrical schematic



## Typical Performance Data

Frequency (MHz)	Insertion Loss (dB)	Return Loss (dB)	Frequency (MHz)	Group Delay (nsec)
$\bar{x}$	$\sigma$			
1.0	30.97	0.1	5.3	4.911
1.2	29.52	0.1	7.0	5.392
1.4	28.29	0.1	8.0	5.612
1.5	27.23	0.1	12.0	6.685
1.7	26.25	0.1	16.0	8.448
1.9	25.40	0.1	20.0	10.612
2.0	24.95	0.1	21.0	11.190
5.3	16.33	0.1	25.0	12.864
7.0	13.88	0.1	26.0	13.075
8.0	12.64	0.1	27.3	13.145
12.0	8.66	0.1	28.8	12.980
16.0	5.59	0.1	30.0	12.639
20.0	3.10	0.1	31.0	12.237
26.0	0.66	0.1	32.3	11.647
28.7	0.26	0.1	33.8	10.775
31.0	0.25	0.1	35.0	10.047
33.7	0.55	0.1	36.0	9.449
44.0	2.99	0.1	44.0	5.471
45.0	3.25	0.1	45.0	5.093
70.0	8.33	0.1	70.0	1.581
95.0	11.72	0.1	95.0	0.883
120.0	14.33	0.1	120.0	0.718
121.0	14.43	0.1	121.0	0.703
180.0	19.47	0.1	150.8	0.518
210.0	21.85	0.1	180.3	0.428
211.0	21.93	0.1	210.0	0.305
258.6	26.09	0.2	233.8	0.196
282.4	28.52	0.2	234.0	0.244
306.2	31.23	0.3	258.0	0.031
330.0	34.20	0.4	282.0	0.378

**Mini-Circuits®**

Distribution Centers NORTH AMERICA 800-654-7949 • 417-335-5935 • Fax 417-335-5945 • EUROPE 44-1252-832600 • Fax 44-1252-837010

Mini-Circuits ISO 9001 & ISO 14001 Certified

INTERNET <http://www.minicircuits.com>

P.O. Box 350166, Brooklyn, New York 11235-0003 (718) 934-4500 Fax (718) 332-4661

REV. A  
M98898  
PIF-30  
060710