

Plug-In

# Bandpass Filter

50Ω Constant Impedance 35 to 49 MHz

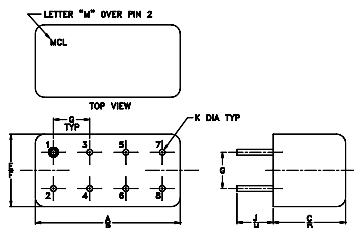
## Maximum Ratings

Operating Temperature	-55°C to 100°C
Storage Temperature	-55°C to 100°C
RF Power Input	0.5W max.

## Pin Connections

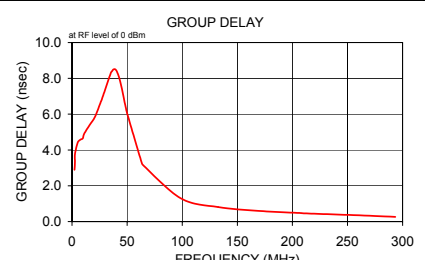
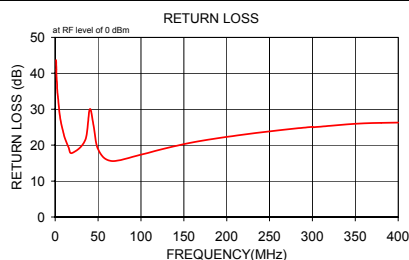
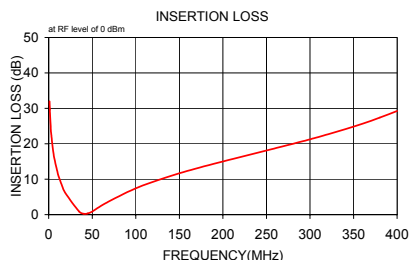
INPUT	1
OUTPUT	6
GROUND	2,3,4,5,7,8
CASE GROUND	2,5,7,8

## Outline Drawing



## Outline Dimensions (inch/mm)

A	B	C	D	E	F
.770	.800	.385	.400	.370	.400
19.56	20.32	9.78	10.16	9.40	10.16
G	H	J	K	wt	
.200	.20	.14	.031		grams
5.08	5.08	3.56	0.79		5.2



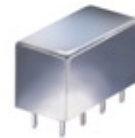
## Features

- low VSWR in pass & stopbands, 1.3:1 typ.
- shielded welded case, hermetically sealed
- custom designs available

## Applications

- harmonic rejection
- lab use
- military/hi-rel applications

PIF-40+  
PIF-40



CASE STYLE: A01  
PRICE: \$17.20 ea. QTY: 1-9

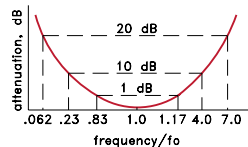
+ RoHS compliant in accordance with EU Directive (2002/95/EC)

The +Suffix identifies RoHS Compliance. See our web site for RoHS Compliance methodologies and qualifications.

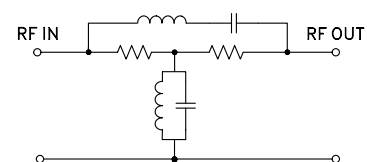
## Bandpass Filter Electrical Specifications

MODEL NO.	CENTER FREQ. (MHz)	PASSBAND (MHz)	STOPBANDS	VSWR, 1.3:1 Typ. TOTAL BAND (MHz)
		(loss < 1 dB)	(loss > 10 dB) at MHz (loss > 20 dB) at MHz	
PIF-40	42	35-49	10 & 168 2.6 & 300	DC-400

## typical frequency response



## electrical schematic



## Typical Performance Data

Frequency (MHz)	Insertion Loss (dB)	Return Loss (dB)	Frequency (MHz)	Group Delay (nsec)
$\bar{x}$	$\sigma$			
1.0	31.97	0.1	2.3	2.895
1.3	29.62	0.1	2.6	3.319
1.6	27.72	0.1	2.7	3.755
2.0	26.20	0.1	5.2	4.422
2.3	24.90	0.1	7.5	4.574
2.6	23.77	0.1	9.9	4.649
3.0	22.54	0.1	11.0	4.904
5.3	17.56	0.1	16.1	5.402
7.7	14.41	0.1	20.9	5.852
10.0	12.05	0.1	26.2	6.700
11.0	11.21	0.1	27.1	6.840
15.3	8.20	0.1	35.1	8.288
19.7	5.92	0.1	36.3	8.399
35.0	0.86	0.1	37.6	8.498
40.3	0.23	0.1	39.6	8.488
44.7	0.31	0.1	41.7	8.249
50.0	0.88	0.1	43.2	7.937
65.0	3.17	0.1	45.4	7.393
99.3	7.37	0.2	47.0	6.910
133.7	10.43	0.2	48.7	6.395
168.0	12.93	0.3	50.4	5.956
212.0	15.76	0.3	63.1	3.323
256.0	18.46	0.4	64.2	3.167
300.0	21.25	0.5	98.9	1.296
301.0	21.32	0.5	132.6	0.812
320.8	22.67	0.6	168.9	0.599
340.60	24.13	0.7	207.7	0.474
360.40	25.67	0.9	211.3	0.462
380.20	27.40	1.1	255.6	0.363
400.00	29.24	1.4	293.4	0.264

**Mini-Circuits®**

Distribution Centers NORTH AMERICA 800-654-7949 • 417-335-5935 • Fax 417-335-5945 • EUROPE 44-1252-832600 • Fax 44-1252-837010

Mini-Circuits ISO 9001 & ISO 14001 Certified

INTERNET <http://www.minicircuits.com>

P.O. Box 350166, Brooklyn, New York 11235-0003 (718) 934-4500 Fax (718) 332-4661

REV. A  
M98898  
PIF-40  
RAV  
060710