

# Low Pass Filter

**50Ω DC to 190 MHz**

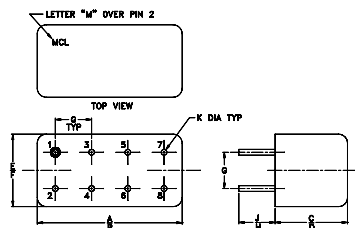
## Maximum Ratings

Operating Temperature	-55°C to 100°C
Storage Temperature	-55°C to 100°C
RF Power Input	0.5W max.

## Pin Connections

INPUT	1
OUTPUT	8
GROUND	2,3,4,5,6,7
CASE GROUND	2,3,4,5,6,7
DEMO BOARD	TB-305

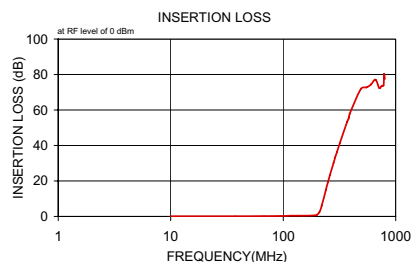
## Outline Drawing



NOTE: BLUE BEAD INDICATES PIN 1.  
PIN NUMBERS DO NOT APPEAR ON UNIT,  
FOR REFERENCE ONLY.

## Outline Dimensions (inch/mm)

A	B	C	D	E	F
.770	.800	.385	.400	.370	.400
19.56	20.32	9.78	10.16	9.40	10.16
G	H	J	K	wt	
.200	.20	.14	.031		grams
5.08	5.08	3.56	0.79		5.2

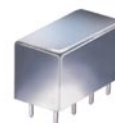


## Features

- rugged welded case, hermetic
- other standard and custom PLP models available with wide selection of fco

## Applications

- test equipment
- lab use
- transmitters/receivers
- military/hi-rel applications



CASE STYLE: A01  
PRICE: \$13.70 ea. QTY (1-9)

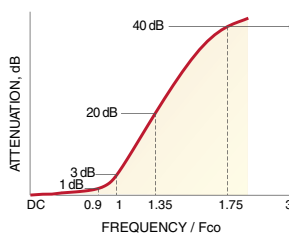
**+ RoHS compliant in accordance with EU Directive (2002/95/EC)**

The +Suffix identifies RoHS Compliance. See our web site for RoHS Compliance methodologies and qualifications.

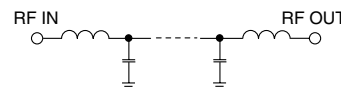
## Low Pass Filter Electrical Specifications

PASSBAND (MHz)	fco (MHz) Nom.	STOPBAND (MHz)	VSWR (:1)
(loss < 1 dB)	(loss 3 dB)	(loss > 20 dB) (loss > 40 dB)	Passband Typ. Stopband Typ.
DC-190	210	290-390 390-800	1.7 18

## typical frequency response



## electrical schematic



## Typical Performance Data

Frequency (MHz)	Insertion Loss (dB)	Return Loss (dB)	Frequency (MHz)	Group Delay (nsec)
$\bar{x}$	$\sigma$			
10.00	0.08	0.1	10.00	4.18
37.50	0.12	0.1	37.50	4.31
67.50	0.15	0.1	67.50	4.38
95.00	0.26	0.1	95.00	4.78
122.50	0.43	0.1	122.50	5.09
150.00	0.39	0.1	150.00	5.75
190.00	0.58	0.1	190.00	8.30
200.00	0.96	0.2	195.00	9.07
210.00	2.52	0.7	200.00	10.18
220.00	6.01	1.1	205.00	11.13
240.00	15.07	1.3	210.00	11.42
250.00	19.34	1.3	220.00	9.61
260.00	23.25	1.4	235.00	5.78
280.00	30.20	1.5	240.00	5.00
290.00	33.33	1.5	245.00	4.34
300.00	36.17	1.5	250.00	3.63
320.00	41.60	1.8	260.00	2.95
370.00	53.41	2.3	280.00	1.79
380.00	55.00	2.8	290.00	1.54
385.00	56.23	2.7	300.00	1.21
390.00	57.87	4.0	310.00	0.88
490.00	71.86	7.9	320.00	0.15
550.00	72.71	1.6	340.00	1.77
602.50	74.42	2.5	370.00	0.31
660.00	77.14	4.3	380.00	2.76
715.00	72.38	5.7	385.00	1.86
750.00	73.49	3.5	390.00	1.94
780.00	73.91	4.7	490.00	1.92
790.00	80.33	5.3	517.50	1.91
800.00	77.51	9.6	550.00	1.81

