

50Ω DC to 5 MHz

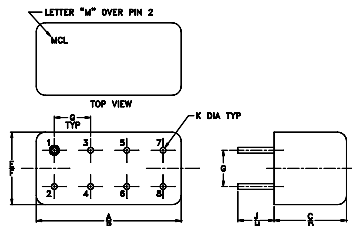
## Maximum Ratings

Operating Temperature	-55°C to 100°C
Storage Temperature	-55°C to 100°C
RF Power Input	0.5W max.

## Pin Connections

INPUT	1
OUTPUT	8
GROUND	2,3,4,5,6,7
CASE GROUND	2,3,4,5,6,7
DEMO BOARD	TB-305

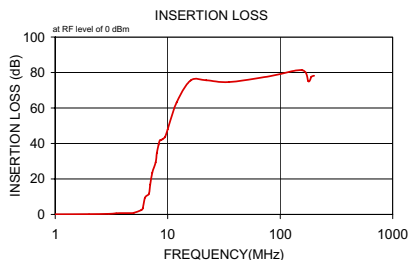
## Outline Drawing



NOTE: BLUE BEAD INDICATES PIN 1.  
PIN NUMBERS DO NOT APPEAR ON UNIT,  
FOR REFERENCE ONLY.

## Outline Dimensions (inch/mm)

A	B	C	D	E	F
.770	.800	.385	.400	.370	.400
19.56	20.32	9.78	10.16	9.40	10.16
G	H	J	K	wt	
.200	.20	.14	.031		grams
5.08	5.08	3.56	0.79		5.2

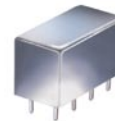


## Features

- rugged welded case, hermetic
- other standard and custom PLP models available with wide selection of fco

## Applications

- test equipment
- lab use
- transmitters/receivers
- military/hi-rel applications



CASE STYLE: A01  
PRICE: \$13.70 ea. QTY (1-9)

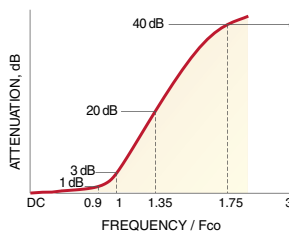
**+ RoHS compliant in accordance with EU Directive (2002/95/EC)**

The +Suffix identifies RoHS Compliance. See our web site for RoHS Compliance methodologies and qualifications.

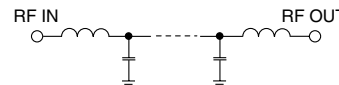
## Low Pass Filter Electrical Specifications

PASSBAND (MHz)	fco (MHz) Nom.	STOPBAND (MHz)	VSWR (:1)
(loss < 1 dB)	(loss 3 dB)	(loss > 20 dB) (loss > 40 dB)	Passband Typ. Stopband Typ.
DC-5	6	8-10 10-200	1.7 18

## typical frequency response



## electrical schematic



## Typical Performance Data

Frequency (MHz)	Insertion Loss (dB)	Return Loss (dB)	Frequency (MHz)	Group Delay (nsec)
$\bar{x}$	$\sigma$			
1.0	0.08	0.1	1.0	147.47
2.0	0.13	0.1	2.0	150.99
3.0	0.34	0.1	3.0	158.96
3.5	0.69	0.1	3.5	164.57
4.0	0.71	0.1	4.0	173.42
4.5	0.73	0.1	4.5	192.06
5.0	0.91	0.1	5.0	215.98
5.8	2.41	0.7	5.3	253.98
6.0	3.35	0.8	5.8	294.32
6.3	9.49	1.3	6.0	326.82
6.8	11.67	1.1	6.3	305.70
7.0	16.87	1.2	6.8	223.89
7.3	23.49	1.1	7.0	180.77
7.8	29.30	1.0	7.3	106.74
8.0	34.55	1.0	7.8	73.25
8.3	39.27	1.0	8.0	54.49
8.5	41.68	1.1	8.3	38.64
8.8	42.05	1.1	8.5	31.12
9.0	42.44	1.1	8.8	29.13
9.5	43.73	1.1	9.0	28.46
10.0	47.90	1.1	9.5	27.23
12.0	63.04	1.6	10.0	26.91
16.0	75.52	4.1	12.0	26.68
22.0	75.62	9.9	13.0	25.95
35.0	74.63	3.9	14.0	25.34
80.0	77.85	6.6	16.0	24.48
156.0	81.35	8.6	18.0	24.08
178.0	75.08	2.3	20.0	24.00
189.0	77.64	6.8	22.0	23.82
200.0	78.15	5.2	24.0	23.72

