

Plug-In

# Low Pass Filter

50Ω DC to 580 MHz

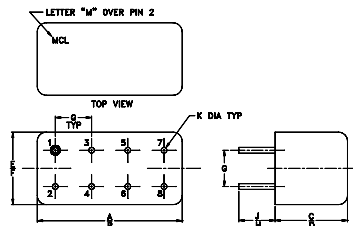
## Maximum Ratings

Operating Temperature	-55°C to 100°C
Storage Temperature	-55°C to 100°C
RF Power Input	0.5W max.

## Pin Connections

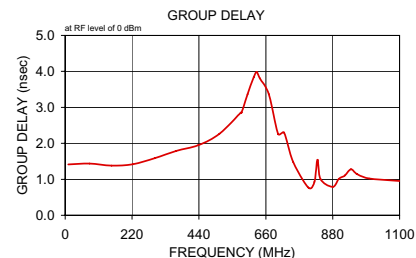
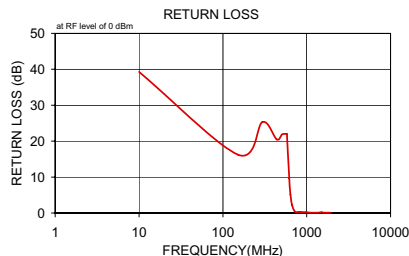
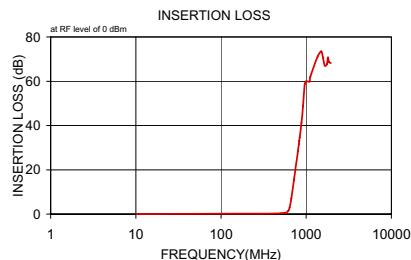
INPUT	1
OUTPUT	8
GROUND	2,3,4,5,6,7
CASE GROUND	2,3,4,5,6,7
DEMO BOARD	TB-305

## Outline Drawing



## Outline Dimensions (inch/mm)

A	B	C	D	E	F
.770	.800	.385	.400	.370	.400
19.56	20.32	9.78	10.16	9.40	10.16
G	H	J	K	wt	
.200	.20	.14	.031		grams
5.08	5.08	3.56	0.79		5.2

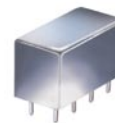


## Features

- rugged welded case, hermetic
- other standard and custom PLP models available with wide selection of fco

## Applications

- test equipment
- lab use
- transmitters/receivers
- military/hi-rel applications



CASE STYLE: A01  
PRICE: \$13.70 ea. QTY (1-9)

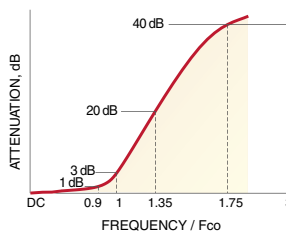
**+ RoHS compliant in accordance with EU Directive (2002/95/EC)**

The +Suffix identifies RoHS Compliance. See our web site for RoHS Compliance methodologies and qualifications.

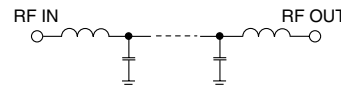
## Low Pass Filter Electrical Specifications

PASSBAND (MHz)	fco (MHz) Nom.	STOPBAND (MHz)	VSWR (:1)
(loss < 1 dB)	(loss 3 dB)	(loss > 20 dB) (loss > 40 dB)	Passband Typ. Stopband Typ.
DC-580	640	840-1120 1120-2000	1.7 18

## typical frequency response



## electrical schematic



## Typical Performance Data

Frequency (MHz)	Insertion Loss (dB)	Return Loss (dB)	Frequency (MHz)	Group Delay (nsec)
$\bar{x}$	$\sigma$			
10.00	0.01	0.1	10.00	1.41
152.50	0.22	0.2	80.00	1.44
295.00	0.20	0.1	152.50	1.38
437.50	0.28	0.1	222.50	1.42
507.50	0.37	0.1	295.00	1.59
577.50	0.59	0.1	365.00	1.79
580.00	0.60	0.1	437.50	1.95
620.00	1.50	0.3	507.50	2.27
640.00	2.98	0.4	577.50	2.86
670.00	7.09	0.6	580.00	2.85
720.00	15.52	2.0	600.00	3.36
800.00	28.44	4.7	620.00	3.84
820.00	31.52	5.4	630.00	3.98
830.00	33.06	5.7	640.00	3.81
840.00	34.63	6.1	670.00	3.37
880.00	41.22	8.0	700.00	2.26
920.00	48.84	9.9	720.00	2.30
960.00	58.62	9.9	750.00	1.48
1000.00	59.95	9.9	800.00	0.77
1100.00	59.89	8.4	820.00	0.93
1120.00	62.05	8.8	830.00	1.54
1360.00	71.05	2.3	840.00	1.00
1502.50	73.53	9.3	880.00	0.79
1572.50	70.71	4.9	900.00	1.01
1650.00	67.12	3.4	920.00	1.11
1750.00	67.73	7.7	940.00	1.28
1800.00	70.74	9.5	960.00	1.15
1850.00	68.64	9.1	1000.00	1.02
1950.00	68.21	7.1	1100.00	0.95
2000.00	65.82	4.6	1120.00	0.85



INTERNET <http://www.minicircuits.com>

P.O. Box 350166, Brooklyn, New York 11235-0003 (718) 934-4500 Fax (718) 332-4661  
Distribution Centers NORTH AMERICA 800-654-7949 • 417-335-5935 • Fax 417-335-5945 • EUROPE 44-1252-832600 • Fax 44-1252-837010

Mini-Circuits ISO 9001 & ISO 14001 Certified

REV. A  
M98898  
PLP-600  
060711