

Plug-In Low Pass Filter

75Ω DC to 11 MHz

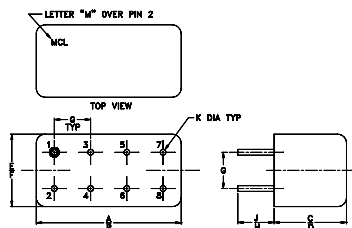
Maximum Ratings

Operating Temperature	-55°C to 100°C
Storage Temperature	-55°C to 100°C
RF Power Input	0.5W max.

Pin Connections

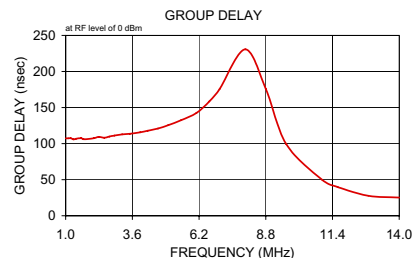
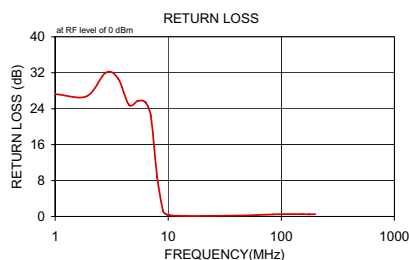
INPUT	1
OUTPUT	8
GROUND	2,3,4,5,6,7
CASE GROUND	2,3,4,5,6,7
DEMO BOARD	TB-305

Outline Drawing



Outline Dimensions (inch/mm)

A	B	C	D	E	F
.770	.800	.385	.400	.370	.400
19.56	20.32	9.78	10.16	9.40	10.16
G	H	J	K	wt	
.200	.20	.14	.031		grams
5.08	5.08	3.56	0.79		5.2

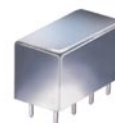


Features

- rugged welded case, hermetic
- other standard and custom PLP models available with wide selection of fco

Applications

- test equipment
- lab use
- transmitters/receivers
- military/hi-rel applications



CASE STYLE: A01
PRICE: \$15.20 ea. QTY (1-9)

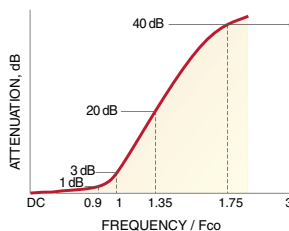
+ RoHS compliant in accordance with EU Directive (2002/95/EC)

The +Suffix identifies RoHS Compliance. See our web site for RoHS Compliance methodologies and qualifications.

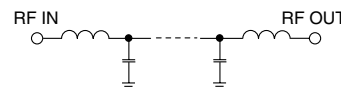
Low Pass Filter Electrical Specifications

PASSBAND (MHz)	fco (MHz) Nom.	STOPBAND (MHz)	VSWR (:1)
(loss < 1 dB)	(loss 3 dB)	(loss > 20 dB) (loss > 40 dB)	Passband Typ. Stopband Typ.
DC-7	8	11-15 15-200	1.7 18

typical frequency response



electrical schematic



Typical Performance Data

Frequency (MHz)	Insertion Loss (dB)	Return Loss (dB)	Frequency (MHz)	Group Delay (nsec)
	\bar{x}	σ		
1.00	0.06	0.01	1.00	107.24
1.90	0.09	0.02	1.10	107.38
2.80	0.11	0.01	1.20	107.50
3.60	0.16	0.03	1.30	105.85
4.50	0.22	0.05	1.40	106.62
5.40	0.26	0.04	1.60	107.46
6.30	0.32	0.04	1.70	106.19
7.00	0.46	0.07	1.90	106.59
8.00	2.33	0.89	2.10	107.52
9.00	10.19	1.45	2.30	109.35
9.40	14.08	1.33	2.50	108.05
9.80	17.83	1.18	2.70	109.75
10.20	21.33	1.06	2.90	111.16
10.60	24.60	0.97	3.20	112.80
11.00	27.65	0.91	3.50	113.53
12.00	34.53	0.87	3.90	115.60
12.60	38.24	0.89	4.20	117.83
13.20	41.68	0.91	4.60	120.94
13.80	44.93	0.87	5.00	125.58
14.40	48.03	0.85	5.50	132.47
15.00	51.02	0.86	6.10	142.49
16.00	55.73	1.23	6.60	158.58
39.00	74.24	0.82	7.00	175.53
62.00	74.55	1.78	8.00	230.76
85.00	74.27	1.16	8.80	175.89
108.00	73.91	0.74	9.60	99.26
131.00	74.48	0.58	11.00	49.80
154.00	74.76	2.43	11.60	39.93
177.00	72.74	1.60	12.80	27.72
200.00	73.75	2.71	14.00	25.14



INTERNET <http://www.minicircuits.com>

P.O. Box 350166, Brooklyn, New York 11235-0003 (718) 934-4500 Fax (718) 332-4661
Distribution Centers NORTH AMERICA 800-654-7949 • 417-335-5935 • Fax 417-335-5945 • EUROPE 44-1252-832600 • Fax 44-1252-837010

Mini-Circuits ISO 9001 & ISO 14001 Certified

REV. A
M98898
PLP-7-75
060711