

Plug-In

Low Pass Filter

75Ω DC to 780 MHz

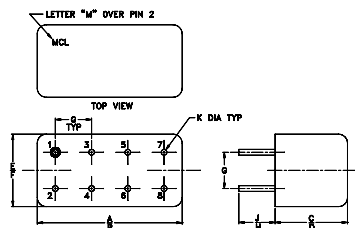
Maximum Ratings

Operating Temperature	-55°C to 100°C
Storage Temperature	-55°C to 100°C
RF Power Input	0.5W max.

Pin Connections

INPUT	1
OUTPUT	8
GROUND	2,3,4,5,6,7
CASE GROUND	2,3,4,5,6,7
DEMO BOARD	TB-305

Outline Drawing



Outline Dimensions (inch/mm)

A	B	C	D	E	F
.770	.800	.385	.400	.370	.400
19.56	20.32	9.78	10.16	9.40	10.16
G	H	J	K	wt	
.200	.20	.14	.031		grams
5.08	5.08	3.56	0.79		5.2

Features

- rugged welded case, hermetic
- other standard and custom PLP models available with wide selection of fco
- custom fco models available

Applications

- test equipment
- lab use
- transmitters/receivers
- military/hi-rel applications



CASE STYLE: A01
PRICE: \$12.95 ea. QTY (1-9)

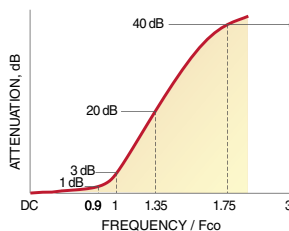
+ RoHS compliant in accordance with EU Directive (2002/95/EC)

The +Suffix identifies RoHS Compliance. See our web site for RoHS Compliance methodologies and qualifications.

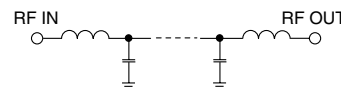
Low Pass Filter Electrical Specifications

PASSBAND (MHz)	fco (MHz) Nom.	STOPBAND (MHz)	VSWR (:1)
(loss < 1 dB)	(loss 3 dB)	(loss > 20 dB) (loss > 40 dB)	Passband Typ. Stopband Typ.
DC-750	850	1150-1490 1490-2000	1.7 18

typical frequency response

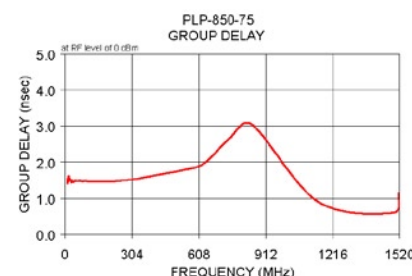
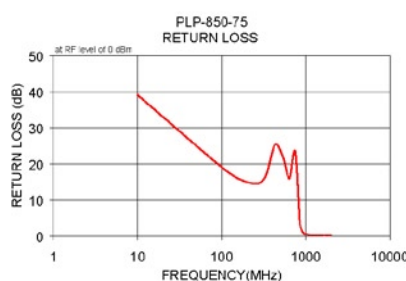
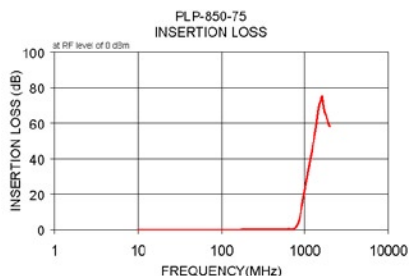


electrical schematic



Typical Performance Data

Frequency (MHz)	Insertion Loss (dB)	Return Loss (dB)	Frequency (MHz)	Group Delay (nsec)
\bar{x}	σ			
10.00	0.00	0.01	10.00	1.54
115.00	0.11	0.00	11.91	1.41
220.00	0.25	0.01	14.07	1.60
325.00	0.26	0.03	16.02	1.61
430.00	0.21	0.03	25.19	1.51
535.00	0.32	0.03	21.89	1.51
640.00	0.53	0.06	15.89	1.44
750.00	0.71	0.06	23.37	1.49
850.00	5.08	1.38	3.44	1.45
950.00	16.83	2.42	0.70	1.49
990.00	21.45	2.68	0.50	1.48
1030.00	26.20	2.84	0.42	1.49
1070.00	30.43	2.97	0.35	1.47
1110.00	34.44	3.19	0.31	1.48
1150.00	38.50	3.39	0.28	1.46
1190.00	42.33	3.61	0.27	1.47
1250.00	47.58	4.02	0.25	1.47
1310.00	53.01	4.55	0.26	1.47
1370.00	58.31	5.90	0.22	1.47
1430.00	65.45	9.61	0.23	1.50
1490.00	70.21	7.22	0.21	1.53
1550.00	72.57	2.22	0.20	1.60
1606.30	75.16	7.29	0.21	1.68
1662.50	69.79	3.15	0.19	1.78
1718.80	66.56	1.75	0.21	1.97
1775.00	64.92	2.48	0.20	2.68
1831.30	62.90	1.72	0.20	3.04
1887.50	61.09	1.20	0.20	0.90
1943.80	59.41	1.25	0.21	0.60
2000.00	58.48	1.28	0.24	1.15



Mini-Circuits®

Distribution Centers NORTH AMERICA 800-654-7949 • 417-335-5935 • Fax 417-335-5945 • EUROPE 44-1252-832600 • Fax 44-1252-837010

Mini-Circuits ISO 9001 & ISO 14001 Certified

INTERNET <http://www.minicircuits.com>

P.O. Box 350166, Brooklyn, New York 11235-0003 (718) 934-4500 Fax (718) 332-4661

REV. A
M98898
PLP-850
060509