

Plug-In

Power Splitter/Combiner

2 Way-0°/180° 50Ω 5 to 200 MHz

PMT-1



CASE STYLE: A04
PRICE: \$24.20 ea. QTY. (10)

Maximum Ratings

Operating Temperature	-55°C to 100°C
Storage Temperature	-55°C to 100°C
Power Input (as a splitter)	1W max.
Internal Dissipation	0.125W max.

Pin Connections

SUMPORT	1
PORT 1	2
PORT 2	3
PORT J	4
GROUND	5,6,7,8
CASE GROUND	5,6,7,8

Features

- low insertion loss, 0.9 dB typ.
- good isolation, 24 dB typ.
- excellent amplitude unbalance, 0.2 dB typ.
- good VSWR, 1.2:1 typ.

Applications

- VHF
- communications systems
- signal processing

Splitter Electrical Specifications

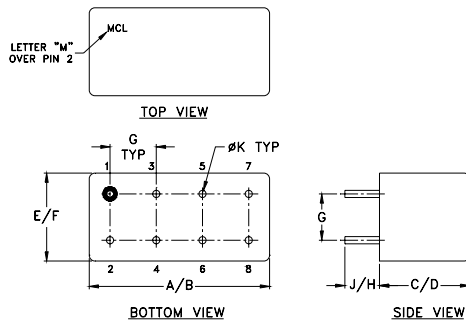
FREQ. RANGE (MHz)	ISOLATION (dB)						INSERTION LOSS (dB) ABOVE 3.0 dB						PHASE UNBALANCE (Degrees)			AMPLITUDE UNBALANCE (dB)		
	L		M		U		L		M		U		L	M	U	L	M	U
	Typ.	Min	Typ.	Min	Typ.	Min	Typ.	Max.	Typ.	Max.	Typ.	Max.	Max.	Max.	Max.	Max.	Max.	Max.
f _l -f _u																		
5-200	22	20	24	20	24	18	0.8	1.0	0.9	1.1	1.0	1.5	2	4	8	0.1	0.2	0.5

L = low range [f_L to 10 f_L] M = mid range [10 f_L to f_U/2] U = upper range [f_U/2 to f_U]

Typical Performance Data

Freq. (MHz)	Insertion Loss (dB)	Amplitude Unbal. (dB)	Insertion Loss (dB)	Amplitude Unbal. (dB)	Isolation (dB)	Amplitude Unbal. (dB)	VSWR S	VSWR 1	VSWR 2
	S-1	S-2	(S-1)-(S-2)	J-1	J-2	(J-1)-(J-2)	1-2	S-J	(S-1)-(S-2) (J-1)-(J-2)
5.03	3.14	3.14	0.00	3.76	3.77	0.01	23.04	56.65	-0.11 179.86
5.83	3.13	3.13	0.00	3.74	3.75	0.01	23.32	56.54	-0.07 179.79
9.62	3.13	3.13	0.00	3.69	3.69	0.01	23.89	55.51	-0.22 179.73
12.25	3.13	3.13	0.00	3.67	3.69	0.00	24.04	54.83	-0.25 179.66
20.21	3.14	3.15	0.01	3.67	3.69	0.00	24.21	53.04	-0.42 179.44
32.73	3.14	3.16	0.02	3.69	3.69	0.00	24.26	50.31	-0.70 179.16
42.43	3.15	3.17	0.02	3.70	3.70	0.01	24.22	48.47	-0.87 178.90
54.00	3.15	3.17	0.02	3.72	3.71	0.01	24.20	46.56	-1.08 178.57
89.10	3.19	3.23	0.04	3.82	3.77	0.05	24.04	42.34	-1.75 177.70
113.40	3.21	3.27	0.06	3.88	3.80	0.08	24.03	40.04	-2.23 177.05
144.31	3.19	3.30	0.11	3.93	3.80	0.13	23.97	37.67	-2.78 176.34
149.77	3.19	3.31	0.12	3.95	3.80	0.14	23.97	37.29	-2.83 176.21
173.72	3.21	3.36	0.15	4.03	3.82	0.21	23.93	35.71	-3.21 175.66
187.10	3.22	3.38	0.17	4.07	3.84	0.24	23.89	34.92	-3.44 175.34
201.51	3.24	3.24	0.18	4.12	3.85	0.27	23.90	34.11	-3.73 174.88

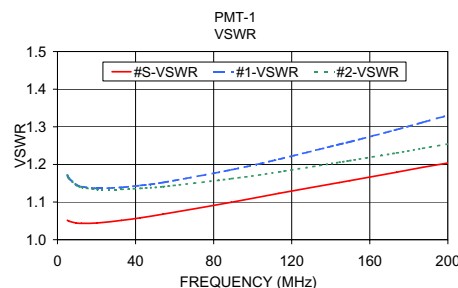
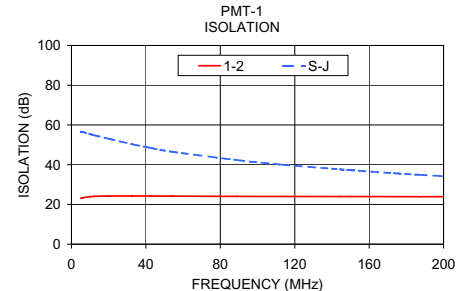
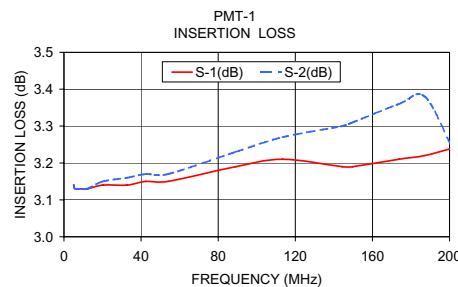
Outline Drawing



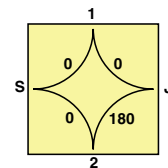
Outline Dimensions (inch/mm)

A	B	C	D	E	F
.770	.800	.200	.210	.370	.400
19.56	20.32	5.08	5.33	9.40	10.16

G	H	J	K	wt
.200	.20	.14	.031	grams
5.08	5.08	3.56	0.79	3.7



electrical schematic



- S-J ports, isolation 40 typical
- Inphase ports, S-1 and S-2 insertion loss 0.2 dB typical
- Amplitude unbalance defined by input S or J ports to output 1 and 2

Mini-Circuits®

Distribution Centers NORTH AMERICA 800-654-7949 • 417-335-5935 • Fax 417-335-5945 • EUROPE 44-1252-832600 • Fax 44-1252-837010

Mini-Circuits ISO 9001 & ISO 14001 Certified

INTERNET <http://www.minicircuits.com>

P.O. Box 350166, Brooklyn, New York 11235-0003 (718) 934-4500 Fax (718) 332-4661

REV. OR
M94845
PMT-1
HY/TD/CP
060915