

Plug-In

Voltage Controlled Oscillator

POS-1025P+
POS-1025P

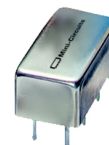
5V Tuning for PLL IC's 680 to 755 MHz

Features

- 5V tuning voltage range
- low phase noise
- hermetically sealed

Applications

- PLL circuitry
- frequency synthesizers
- measurement instrumentation



CASE STYLE:A06

PRICE: \$17.95 ea. QTY (5-49)

**+ RoHS compliant in accordance
with EU Directive (2002/95/EC)**

See our web site for RoHS Compliance methodologies and qualifications.

Electrical Specifications

MODEL NO.	FREQ. (MHz)		POWER OUTPUT (dBm)	PHASE NOISE dBc/Hz SSB at offset frequencies: Typ.				PULLING pk-pk @ 12 dBr (MHz)	PUSHING (MHz/V)	TUNING SENSITIVITY (MHz/V)	HARMONICS (dBc)		3 dB MODULATION BANDWIDTH (MHz)	DC OPERATING POWER	
	Min.	Max.		1 kHz	10 kHz	100 kHz	1 MHz				Typ.	Max.		Typ.	Voltage (V)
POS-1025P(++)	680	755	8.5	-74	-96	-116	-135	5.0	0.6	30 - 40	-24	-18	0.1	12	22

TUNING VOLTAGE TO COVER FREQUENCY RANGE 0.5V MIN. TO 5V MAX.

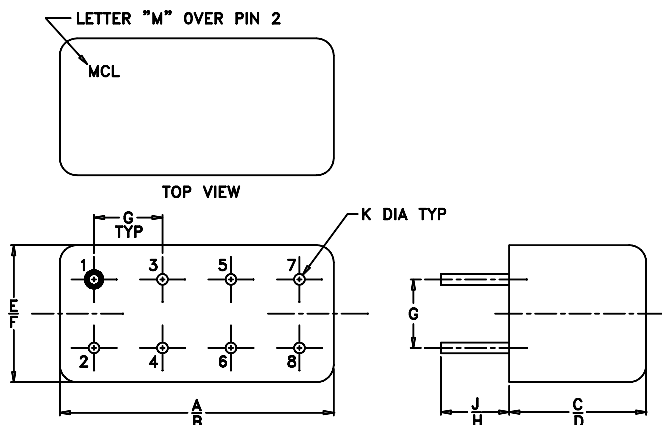
Pin Connections

RFOUT	2
VCC	1
V-TUNE	8
GROUND	3,4,5,6,7
CASE GROUND	3,4,5,6,7

Maximum Ratings

Operating Temperature	-55°C to 85°C
Storage Temperature	-55°C to 100°C
Absolute Max. Supply Voltage (Vcc)	+16V
Absolute Max. Tuning Voltage (Vtune)	+7V
all specifications: 50 ohm system	

Outline Drawing



NOTE: BLUE BEAD INDICATES PIN 1.
PIN NUMBERS DO NOT APPEAR ON UNIT,
FOR REFERENCE ONLY.

Outline Dimensions (inch)

A	B	C	D	E	F	G	H	J	K	wt.
.770	.800	.285	.310	.370	.400	.200	.20	.14	.031	grams
19.56	20.32	7.24	7.87	9.40	10.16	5.08	5.08	3.56	.79	5.2



INTERNET <http://www.minicircuits.com>

P.O. Box 350166, Brooklyn, New York 11235-0003 (718) 934-4500 Fax (718) 332-4661

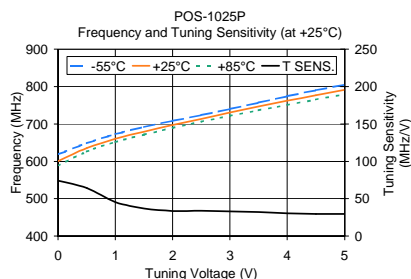
Distribution Centers NORTH AMERICA 800-654-7949 • 417-335-5935 • Fax 417-335-5945 • EUROPE 44-1252-832600 • Fax 44-1252-837010

Mini-Circuits ISO 9001 & ISO 14001 Certified

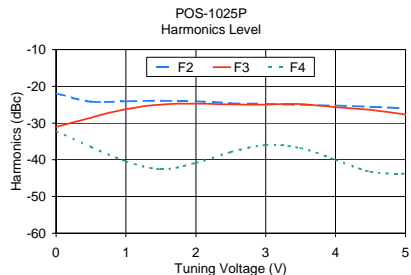
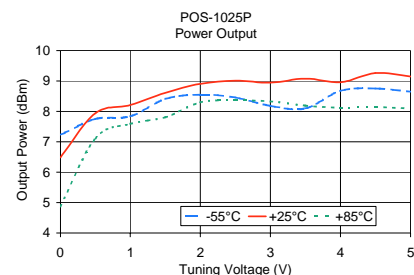
REV. H
M98898
POS-1025P
SK/TD/CP
051206
page 1 of 2

Performance Curves

POS-1025P+ POS-1025P



V TUNE	TUNING SENS. (MHz/V)	FREQUENCY (MHz)			POWER OUTPUT (dBm)		
		-55°C	+25°C	+85°C	-55°C	+25°C	+85°C
0.0	74.25	618.42	600.96	587.81	7.23	6.49	4.87
0.5	64.32	648.48	635.61	626.06	7.75	7.94	7.12
1.0	45.46	672.76	660.32	651.44	7.84	8.21	7.59
1.5	37.02	691.93	679.74	671.51	8.41	8.61	7.81
2.0	33.63	708.39	696.92	689.26	8.55	8.91	8.30
2.5	33.85	723.86	713.86	706.14	8.46	9.01	8.36
3.0	33.14	739.79	730.49	721.74	8.18	8.95	8.33
3.5	32.01	756.87	746.67	736.54	8.10	9.08	8.19
4.0	30.49	774.28	762.14	750.97	8.68	8.96	8.12
4.5	29.59	790.17	777.03	765.28	8.75	9.26	8.14
5.0	29.72	805.25	791.89	779.85	8.65	9.15	8.10



V TUNE	HARMONICS (dBc)			FREQ. PUSHING (MHz/V)
	F2	F3	F4	
0.0	-21.96	-31.12	-32.12	1.28
0.5	-24.17	-28.51	-36.51	0.70
1.0	-24.05	-26.22	-40.38	-0.13
1.5	-23.94	-24.94	-42.60	-0.90
2.0	-24.06	-24.73	-40.89	-0.83
2.5	-24.58	-24.92	-37.92	-1.09
3.0	-24.79	-24.96	-35.96	-1.09
3.5	-25.00	-24.83	-36.83	-0.90
4.0	-25.21	-25.71	-40.05	-0.90
4.5	-25.59	-26.42	-43.25	-0.70
5.0	-26.02	-27.68	-43.85	-0.32

