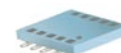


Surface Mount Power Splitter/Combiner

QBA-12N+
QBA-12N

2 Way-90° 50Ω 800 to 900 MHz



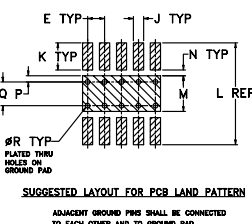
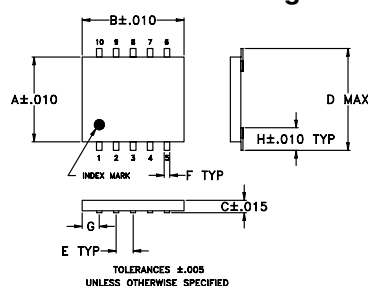
Maximum Ratings

Operating Temperature	-55°C to 100°C
Storage Temperature	-55°C to 100°C

Pin Connections

SUMPORT	1
PORT 1 (+90°)	10
PORT 2 (0°)	6
GROUND	2,3,4,7,8,9
50 OHM TERM EXTERNAL	5

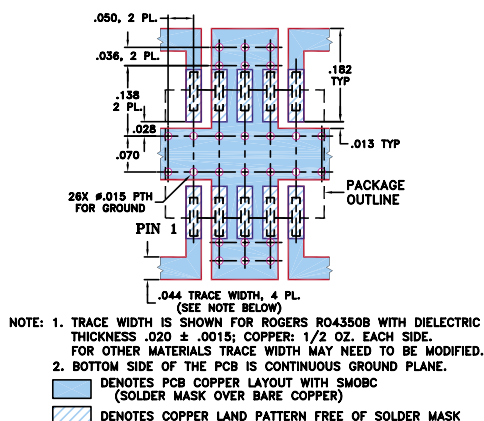
Outline Drawing



Outline Dimensions (inch)

A	B	C	D	E	F	G	H	
.250	.300	0.50	.310	.050	.015	.050	.066	
6.35	7.62	12.70	7.87	1.27	0.38	1.27	1.68	
J	K	L	M	N	P	Q	R	wt
.030	.095	.330	.100	.020	.015	.070	.014	grams
0.76	2.41	8.38	2.54	0.51	0.38	1.78	0.36	0.2

Demo Board MCL P/N: TB-115 Suggested PCB Layout (PL-004)



Features

- low insertion loss, 0.25 dB typ.
- high power capability, 50W
- high isolation, 28 dB typ.
- ceramic body, good for heat dissipation
- solder plated leads for excellent solderability
- protected by U.S. Patent 5,534,830

Applications

- cellular
- digital cordless phones

Splitter Electrical Specifications

FREQ. RANGE (MHz)	ISOLATION (dB)	INSERTION LOSS ¹ (dB) Avg. of Coupled Outputs less 3 dB	PHASE UNBALANCE (Degrees)	AMPLITUDE UNBALANCE (dB)	INPUT POWER (W)
f_L - f_U	Typ. Min.	\bar{f}_L \bar{f}_U σ	Max.	Max.	below 25°C
800-900	28 20	0.25 0.30 0.02	3.0	1.0	50 ²

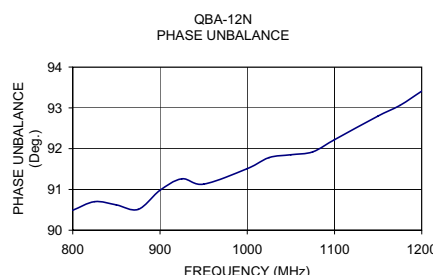
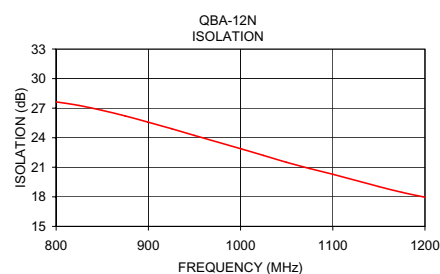
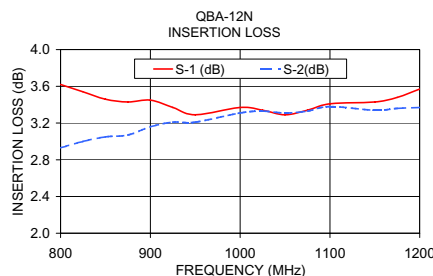
1. Includes test fixture losses.

2. Derate linearly to 10W at 100°C

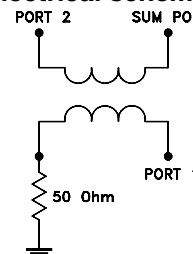
Thermal compound may be applied to decrease body temperature. See application note AN-10-007

Typical Performance Data

Frequency (MHz)	Insertion Loss (dB)	Amplitude Unbalance (dB)	Isolation (dB)	Phase Unbalance (deg.)	VSWR S	VSWR 1	VSWR 2
	S-1	S-2					
800.00	3.62	2.93	0.70	27.63	1.08	1.21	1.09
825.00	3.54	3.00	0.54	27.27	1.08	1.21	1.09
850.00	3.46	3.05	0.40	26.77	1.08	1.22	1.09
875.00	3.43	3.07	0.36	26.21	1.08	1.23	1.09
900.00	3.45	3.16	0.28	25.57	1.09	1.24	1.10
925.00	3.37	3.21	0.16	24.92	1.09	1.25	1.10
950.00	3.29	3.21	0.09	24.23	1.11	1.26	1.11
1000.00	3.37	3.31	0.06	22.89	1.13	1.28	1.13
1025.00	3.34	3.33	0.01	22.20	1.15	1.29	1.15
1050.00	3.29	3.31	0.03	21.50	1.17	1.30	1.16
1075.00	3.34	3.33	0.01	20.87	1.19	1.31	1.17
1100.00	3.41	3.38	0.03	20.29	1.21	1.32	1.19
1150.00	3.43	3.34	0.09	19.04	1.26	1.35	1.23
1175.00	3.48	3.36	0.12	18.46	1.28	1.36	1.25
1200.00	3.57	3.37	0.20	17.96	1.31	1.37	1.27



electrical schematic



Mini-Circuits®

Distribution Centers NORTH AMERICA 800-654-7949 • 417-335-5935 • Fax 417-335-5945 • EUROPE 44-1252-832600 • Fax 44-1252-837010

Mini-Circuits ISO 9001 & ISO 14001 Certified

INTERNET <http://www.minicircuits.com>

P.O. Box 350166, Brooklyn, New York 11235-0003 (718) 934-4500 Fax (718) 332-4661



REV. B
M98898
EDB991005
QBA-12
WZ/BC/CP
060915