



CASE STYLE: FV1206-1

Model	Price	Qty.
QCN	\$3.95	(10-49)
QCN-D	\$4.45	(10-49)

Maximum Ratings

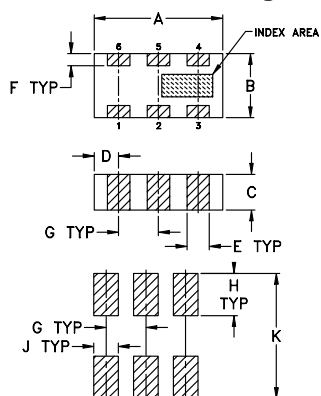
Operating Temperature	-55°C to 100°C
Storage Temperature	-55°C to 100°C
Power Input (as a splitter)	15W* max.

*derate linearly to 7W at 100°C ambient.

Pin Connections

SUM PORT	1
PORT 1	4(0°)
PORT 2	6(90°)
GROUND	2,5
50 OHM TERM (EXTERNAL)	3

Outline Drawing

SUGGESTED LAYOUT FOR PCB PATTERN
PATTERN TO BE WITHIN ±.002

TOLERANCE UNLESS OTHERWISE STATED

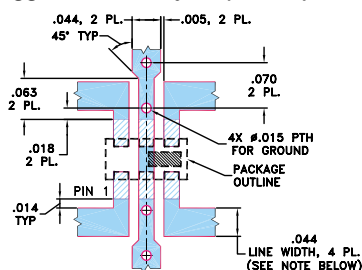
2 PLACE DECIMALS: ±.01

3 PLACE DECIMALS: ±.005

Outline Dimensions (inch)

A	B	C	D	E	F
.126	.063	.035	.024	.022	.012
3.20	1.60	0.89	0.61	0.56	0.30

G	H	J	K	wt
.039	.042	.024	.123	grams
0.99	1.07	0.61	3.12	.020

Demo Board MCL P/N: TB-255
Suggested PCB Layout (PL-131)

NOTE: 1. TRACE WIDTH IS SHOWN FOR ROGERS RO4350 WITH DIELECTRIC THICKNESS .020" ± .0015". COPPER: 1/2 OZ. EACH SIDE. FOR OTHER MATERIALS TRACE WIDTH MAY NEED TO BE MODIFIED.

2. BOTTOM SIDE OF THE PCB IS CONTINUOUS GROUND PLANE.

■ DENOTES PCB COPPER LAYOUT

■ DENOTES COPPER LAND PATTERN FREE OF SOLDERMASK

Features

- low insertion loss, 0.4 dB typ.
- high isolation, 26 dB typ.
- wrap-around terminal for excellent solderability
- ultra small, .12"x.06"x.035"
- patent pending

Applications

- balanced amplifiers
- modulators
- cellular
- UMTS
- PCN
- WCDMA
- ISM

Splitter Electrical Specifications¹

MODEL NO.	FREQ. RANGE (MHz) f_L - f_U	ISOLATION (dB) Typ. Min.	INSERTION LOSS (dB) Avg. of coupled outputs less 3 dB Typ. Max.	PHASE UNBALANCE (Degrees) Typ. Max.	AMPLITUDE UNBALANCE (dB) Typ. Max.	VSWR (:1) Typ.
New! QCN-5	330-580 330-400 400-525 525-580	23 20 22 17 18 14	0.3 0.6 0.4 0.7 0.6 0.9	2.5 5 2.5 4 1 4	0.6 1.1 0.2 0.5 0.3 1.1	1.2 1.2 1.2
QCN-7	425-675 425-550 550-675	17 13 17 11	0.4 0.7 0.6 1.0	2 8 4 8	0.5 1.0 0.5 1.0	1.3 1.4
QCN-12	800-1375 800-1000 1000-1375	19 14 19 14	0.4 0.8 0.6 1.0	9 12 9 13	0.4 0.9 0.7 1.0	1.3 1.5
New! QCN-12A	800-1250 800-1000 1000-1250	17 15 16 13	0.3 0.6 0.4 0.7	2.5 5 1 3	0.2 0.8 0.5 0.8	1.2 1.2
QCN-19	1100-1925 1100-1400 1400-1600 1600-1925	25 19 26 20 26 20	0.4 0.7 0.4 0.8 0.5 0.9	1 3 2 4 2 4	0.4 1.1 0.5 1.0 0.4 1.1	1.15 1.2 1.2
QCN-25	1350-2450 1350-1950 1950-2200 2200-2450	25 18 25 20 25 18	0.4 0.7 0.4 0.7 0.6 0.9	1 5 1 4 1 4	0.5 1.1 0.5 1.0 0.5 1.1	1.2 1.15 1.2
QCN-27	1700-2700 1700-1800 1800-2000 2000-2400 2400-2700	21 18 22 18 30 20 30 20	0.4 0.7 0.4 0.7 0.4 0.7 0.5 0.9	3 6 2 6 3 6 3 6	0.5 1.0 0.2 0.6 0.2 0.8 0.6 1.0	1.2 1.2 1.2 1.2
New! QCN-34	2500-3400 2500-2800 2800-3400	32 23 26 20	0.4 0.6 0.5 0.7	1 3 1 4	0.4 0.9 0.5 1.2	1.15 1.15

1. For Applications requiring DC voltage to be applied to the RF ports, add suffix letter "D" to part no. DC resistance to ground is 100 Mohms min.

schematic

