

Plug-In

Frequency Multiplier

Output 10 to 1000 MHz

Maximum Ratings

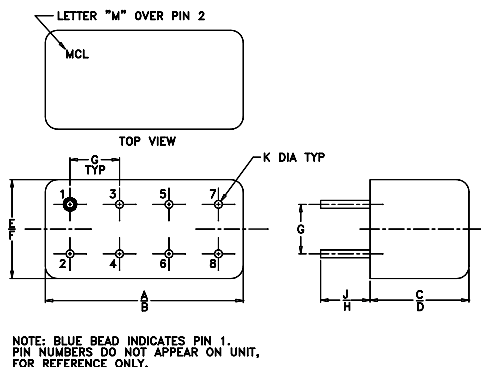
Operating Temperature	-55°C to 100°C
Storage Temperature	-55°C to 100°C
RF Input Power	200mW

Pin Connections

INPUT	1,3,4 [^]
OUTPUT	8
GROUND	2,5,6,7
CASE GROUND	2,5,6,7

[^]pins must be connected together externally

Outline Drawing



Outline Dimensions (inch/mm)

A	B	C	D	E	F
.770	.800	.385	.400	.370	.400
19.56	20.32	9.78	10.16	9.40	10.16
G	H	J	K		
.200	.20	.14	.031	wt	
5.08	5.08	3.56	0.79	grams	5.2

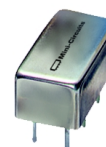
Features

- wideband, 10 to 1000 MHz
- low conversion loss, 13.5 dB typ
- hermetic case

Applications

- synthesizers
- local oscillators
- military, hi-rel applications

RK-2+
RK-2



CASE STYLE: A01
PRICE: \$20.20 ea. QTY (1-9)

+ RoHS compliant in accordance with EU Directive (2002/95/EC)

The + suffix identifies RoHS Compliance. See our web site for RoHS Compliance methodologies and qualifications.

Frequency Multiplier Electrical Specifications

MODEL NO.	MULTIPLICATION FACTOR	FREQUENCY (MHz)		INPUT POWER (dBm)		CONVERSION LOSS (dB)		*HARMONIC OUTPUT (dBc)					
		Input	Output	Min.	Max.	Typ.	Max.	F1 Typ.	F1 Min.	F3 Typ.	F3 Min.	F4 Typ.	F4 Min.
RK-2(+)	2	5-100	10-200	1	15	13	16	40	30	50	40	16	12
		100-300	200-600	1	15	13.5	15.5	25	20	40	30	16	12
		300-500	600-7000	1	15	14.0	16.5	20	15	30	25	16	12

*Harmonic output below power level of F2

Typical Performance Data

Output Frequency (MHz)	Conversion Loss (dB)	Harmonic Output (-dBc)		
		F1	F3	F4
2.00	15.26	48.20	57.00	13.70
10.00	13.06	48.70	57.80	13.80
20.00	12.72	49.80	59.00	16.00
50.00	13.52	43.60	58.00	16.20
100.00	12.74	39.00	52.20	16.90
200.00	13.04	33.60	43.60	17.00
400.00	13.06	27.20	36.40	20.60
600.00	13.28	23.70	31.60	24.20
800.00	14.00	18.90	32.20	25.90
1000.00	15.04	16.00	33.70	26.20

