

Coaxial

Low Pass Filter

SBLP-933

50Ω Flat Time Delay DC to 560 MHz

Maximum Ratings

Operating Temperature	-55°C to 100°C
Storage Temperature	-55°C to 100°C
RF Power Input	0.5W max.

Features

- flat group delay for low pulse distortion
- rugged shielded case
- other SBLP models available with wide selection of cut-off frequencies

Applications

- linear modulation techniques
- voice transmission applications
- digital communications



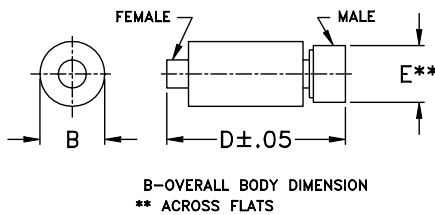
CASE STYLE: FF99

Connectors	Model	Price	Qty.
SMA	SBLP-933	\$38.95 ea.	(1-9)

Low Pass Filter Electrical Specifications

PASSBAND (MHz)	fco, MHz Nom.	STOPBAND (MHz)		VSWR (:1)		GROUP DELAY VARIATION (nsec)		
		(loss > 10 dB)	(loss > 20 dB)	DC-0.2fco	DC-0.6fco	DC-fco	DC-2fco	DC-2.67fco
(loss < 1.2 dB) Min.	(loss 3 dB)			\bar{X}	\bar{X}	\bar{X}	\bar{X}	\bar{X}
DC-560	933	1866-2490	2490	1.3:1	2.2:1	0.09	0.2	0.28

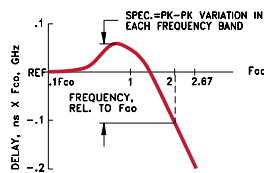
Outline Drawing



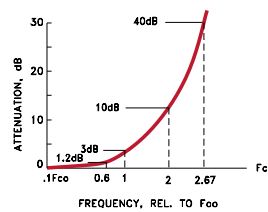
Outline Dimensions (inch)

B	D	E	wt
.67	1.98	.312	grams
17.02	50.29	7.92	42.0

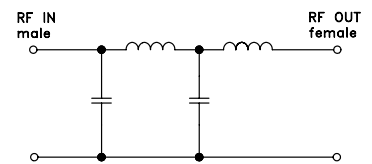
TYPICAL GROUP DELAY



TYPICAL FREQUENCY RESPONSE INSERTION LOSS



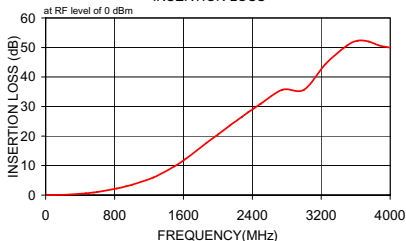
electrical schematic



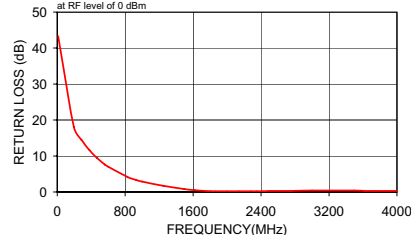
Typical Performance Data

Frequency (MHz)	Insertion Loss (dB)		Return Loss (dB)	Frequency (MHz)	Group Delay (nsec)
	\bar{X}	σ			
10.0	0.01	0.1	43.3	10.0	0.568
195.0	0.11	0.1	18.1	105.0	0.594
285.0	0.21	0.1	14.5	195.0	0.591
380.0	0.38	0.1	11.6	285.0	0.593
470.0	0.59	0.1	9.4	380.0	0.577
560.0	0.88	0.1	7.6	470.0	0.596
600.0	1.05	0.1	7.0	560.0	0.594
825.0	2.24	0.1	4.2	600.0	0.626
933.0	3.00	0.1	3.3	715.0	0.584
1000.0	3.49	0.1	2.9	825.0	0.654
1250.0	5.97	0.1	1.7	933.0	0.591
1495.0	9.72	0.1	0.8	1000.0	0.609
1620.0	12.16	0.2	0.5	1125.0	0.610
1745.0	14.88	0.2	0.3	1250.0	0.645
1866.0	17.63	0.3	0.2	1375.0	0.601
2000.0	20.52	0.3	0.2	1495.0	0.606
2140.0	23.58	0.3	0.2	1620.0	0.510
2280.0	26.55	0.2	0.2	1745.0	0.528
2350.0	28.00	0.2	0.2	1866.0	0.423
2420.0	29.40	0.2	0.2	2000.0	0.462
2490.0	30.81	0.3	0.3	2070.0	0.422
2500.0	30.99	0.3	0.3	2140.0	0.338
2750.0	35.70	0.5	0.3	2210.0	0.404
3000.0	35.69	1.0	0.4	2280.0	0.430
3250.0	44.45	2.1	0.4	2350.0	0.336
3500.0	50.66	4.7	0.4	2420.0	0.364
3625.0	52.33	4.9	0.3	2490.0	0.310
3750.0	52.01	3.4	0.3	2500.0	0.366
3875.0	50.70	2.2	0.3	2625.0	0.392
4000.0	49.92	2.5	0.3	2750.0	0.519

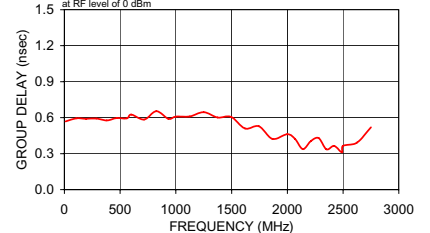
INSERTION LOSS



RETURN LOSS



GROUP DELAY



INTERNET <http://www.minicircuits.com>

P.O. Box 350166, Brooklyn, New York 11235-0003 (718) 934-4500 Fax (718) 332-4661

Distribution Centers NORTH AMERICA 800-654-7949 • 417-335-5935 • Fax 417-335-5945 • EUROPE 44-1252-832600 • Fax 44-1252-837010

Mini-Circuits ISO 9001 & ISO 14001 Certified

REV. OR
M97867
SBLP-933
060217