

Coaxial

Bandpass Filter

50Ω Elliptic Response 55 to 67 MHz

Maximum Ratings

Operating Temperature	-55°C to 100°C
Storage Temperature	-55°C to 100°C
RF Power Input	0.5W max.

Features

- low insertion loss, 1.5 dB max.
- good selectivity, 1.76 typ. 20 dB / 3dB BW ratio
- rugged shielded case

Applications

- high rejection applications
- image rejection
- IF signal processing

SBP-60+ SBP-60



CASE STYLE: FF99

Connectors	Model	Price	Qty.
SMA	SBP-60(+)	\$42.95 ea.	(1-9)

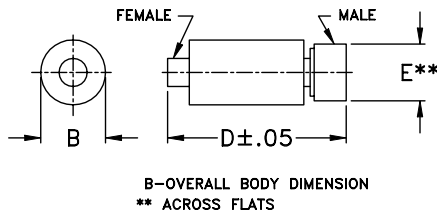
+ RoHS compliant in accordance with EU Directive (2002/95/EC)

The + suffix identifies RoHS Compliance. See our web site for RoHS Compliance methodologies and qualifications.

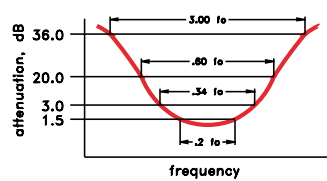
Bandpass Filter Electrical Specifications

MODEL NO.	CENTER FREQ. (MHz)	PASSBAND (MHz)	3dB BANDWIDTH (MHz)	STOPBANDS		VSWR (:1)	
		I.L. 1.5 dB Max.	Typ.	(I. loss > 20 dB) at MHz	(I. loss > 35 dB) at MHz	Passband Max.	Stopband Typ.
SBP-60(+)	60	55-67	49.8-70.5	44 & 79	4.6 & 190-1000	1.7	16

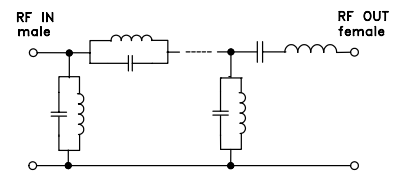
Outline Drawing



typical frequency response

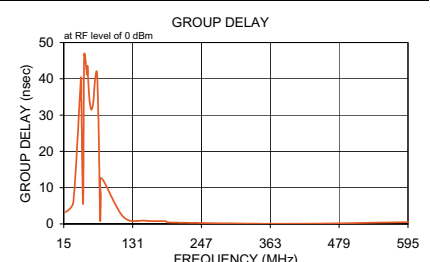
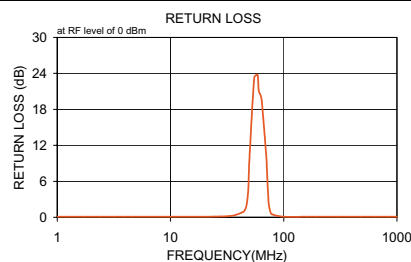


electrical schematic



Typical Performance Data

Frequency (MHz)	Insertion Loss (dB)		Return Loss (dB)	Frequency (MHz)	Group Delay (nsec)
	\bar{x}	σ			
1.0	84.04	7.1	0.1	17.9	3.240
1.7	85.43	7.0	0.1	31.1	5.995
2.4	76.11	2.6	0.1	43.9	39.921
3.2	74.96	2.8	0.1	44.7	35.653
3.9	71.07	2.3	0.1	46.2	16.491
4.6	67.50	1.7	0.1	47.9	6.771
10.0	54.99	0.4	0.1	49.5	46.457
32.7	30.64	0.9	0.2	54.0	41.142
44.0	33.27	4.8	0.9	55.0	43.528
45.0	29.89	6.3	1.1	55.9	40.065
47.0	15.98	3.6	2.0	57.9	34.902
48.6	7.60	2.1	4.7	58.9	33.283
49.8	3.27	0.7	9.8	61.0	31.633
55.0	1.36	0.1	23.3	62.0	31.517
58.7	1.16	0.1	23.8	64.2	32.819
60.3	1.14	0.1	21.0	65.3	34.547
63.7	1.20	0.1	19.8	66.5	36.948
70.5	2.89	0.3	9.8	67.6	39.519
71.0	3.45	0.3	8.0	70.0	42.124
73.7	9.21	0.6	2.4	71.2	41.298
76.3	18.97	0.8	0.9	73.7	26.181
79.0	34.96	1.1	0.5	76.3	1.540
100.0	27.50	0.5	0.1	77.6	7.179
160.0	40.78	0.6	0.1	79.0	12.528
190.0	45.59	0.7	0.1	115.5	1.937
300.0	61.77	1.7	0.1	152.2	0.901
475.0	68.58	5.7	0.1	187.3	0.734
650.0	53.94	1.4	0.1	190.5	0.405
825.0	46.86	1.7	0.1	393.6	0.055
1000.0	42.22	1.9	0.1	595.7	0.502



Mini-Circuits®

INTERNET <http://www.minicircuits.com>

P.O. Box 350166, Brooklyn, New York 11235-0003 (718) 934-4500 Fax (718) 332-4661
Distribution Centers NORTH AMERICA 800-654-7949 • 417-335-5935 • Fax 417-335-5945 • EUROPE 44-1252-832600 • Fax 44-1252-837010

Mini-Circuits ISO 9001 & ISO 14001 Certified

REV.A
M98898
SBP-60
060323