

Surface Mount Low Pass Filter

50Ω DC to 380 MHz

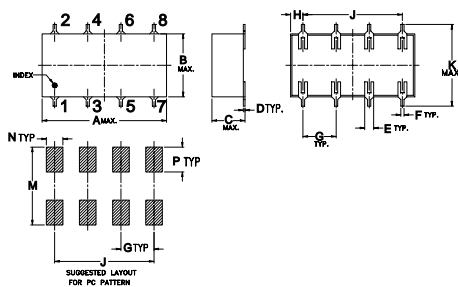
Maximum Ratings

Operating Temperature	-40°C to 85°C
Storage Temperature	-55°C to 100°C
Power Input	0.5W max.

Pin Connections

INPUT	1
OUTPUT	8
GROUND	2,3,4,5,6,7

Outline Drawing

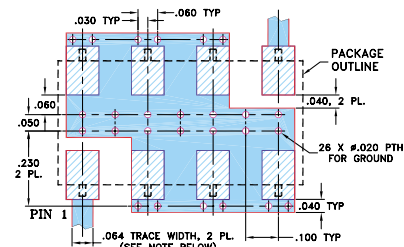


Outline Dimensions (inch/mm)

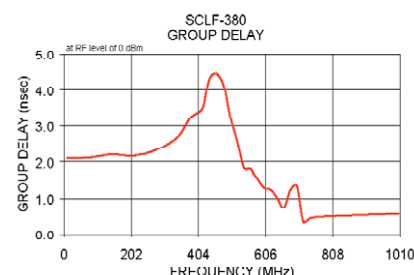
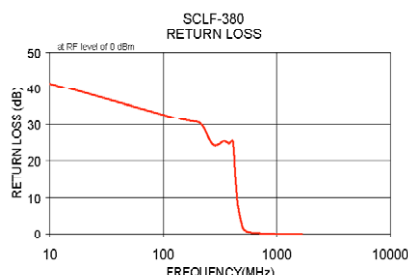
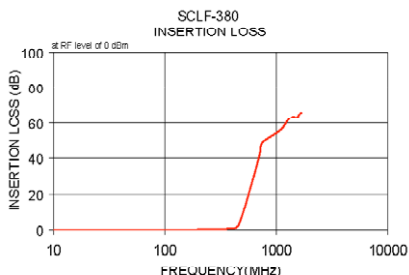
A	B	C	D	E	F	G
0.75	0.38	0.28	0.01	0.05	0.02	0.2
19.05	9.65	7.11	0.25	1.27	0.51	5.08

H	J	K	M	N	P	wt
0.07	0.6	0.45	0.47	0.1	0.15	grams
1.91	15.24	11.43	11.94	2.54	3.81	1.60

Demo Board MCL P/N: TB-187 Suggested PCB Layout (PL-049)



- NOTES: 1. TRACE WIDTH IS SHOWN FOR ROGERS RO4350B WITH DIELECTRIC THICKNESS .030" ± .002"; COPPER: 1/2 OZ. EACH SIDE. FOR OTHER MATERIALS TRACE WIDTH MAY NEED TO BE MODIFIED.
2. BOTTOM SIDE OF THE PCB IS CONTINUOUS GROUND PLANE.
3. DENOTES PCB COPPER LAYOUT WITH SMOBC (SOLDER MASK OVER BARE COPPER)
4. DENOTES COPPER LAND PATTERN FREE OF SOLDER MASK



SCLF-380+ SCLF-380



CASE STYLE: YY161
PRICE: \$11.45 ea. QTY (1-9)

Features

- wide selection of cut-off frequencies
- excellent rejection
- custom models available

Applications

- defense communications
- receivers/transmitters
- harmonic rejection of VCOs

+ RoHS compliant in accordance
with EU Directive (2002/95/EC)

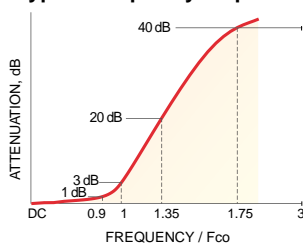
The +Suffix identifies RoHS Compliance. See our web site
for RoHS Compliance methodologies and qualifications.

Low Pass Filter Electrical Specifications

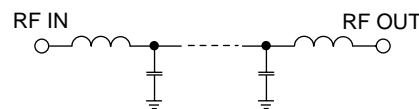
PASSBAND (MHz)	f _{co} , (MHz) Nom.	STOPBAND (MHz)	VSWR (:1)
(loss < 1 dB)	(loss 3 dB)	(loss > 20 dB) (loss > 40 dB)	Pass band typ. Stop band typ.
DC-380	440	580-750 750-1800*	1.7 18

* Loss > 35 dB

typical frequency response



electrical schematic



Typical Performance Data

Frequency (MHz)	Insertion Loss (dB)	Return Loss (dB)	Frequency (MHz)	Group Delay (nsec)
\bar{x}	σ			
10.00	0.02	0.10	10.00	2.09
142.50	0.13	0.10	142.50	2.11
210.00	0.20	0.10	210.00	2.19
275.00	0.29	0.10	275.00	2.16
342.50	0.44	0.10	342.50	2.32
380.00	0.67	0.10	380.00	2.71
410.00	0.74	0.10	410.00	3.24
430.00	1.03	0.20	430.00	3.44
440.00	1.34	0.20	440.00	3.61
460.00	2.74	0.50	460.00	4.08
500.00	8.54	0.70	500.00	4.37
540.00	15.86	0.70	540.00	4.45
560.00	19.27	0.70	560.00	4.12
570.00	20.89	0.70	570.00	3.25
580.00	22.44	0.70	580.00	2.60
600.00	25.63	0.70	600.00	1.85
640.00	31.77	0.90	640.00	1.82
680.00	37.56	1.00	680.00	1.68
700.00	40.46	1.10	700.00	1.56
720.00	43.62	1.50	720.00	1.30
750.00	49.16	2.20	750.00	1.24
1005.00	54.51	2.70	1005.00	1.02
1137.50	57.05	4.50	1137.50	0.73
1270.00	61.62	6.50	1270.00	1.22
1402.50	63.80	6.10	1402.50	1.34
1535.00	63.45	3.20	1535.00	0.32
1600.00	65.10	3.10	1600.00	0.46
1667.50	66.20	5.40	1667.50	0.56

Mini-Circuits®

Distribution Centers NORTH AMERICA 800-654-7949 • 417-335-5935 • Fax 417-335-5945 • EUROPE 44-1252-832600 • Fax 44-1252-837010

Mini-Circuits ISO 9001 & ISO 14001 Certified

INTERNET <http://www.minicircuits.com>

P.O. Box 350166, Brooklyn, New York 11235-0003 (718) 934-4500 Fax (718) 332-4661

REV. C
M98898
SCLF-380
060515