

Surface Mount Low Pass Filter

50Ω DC to 5 MHz

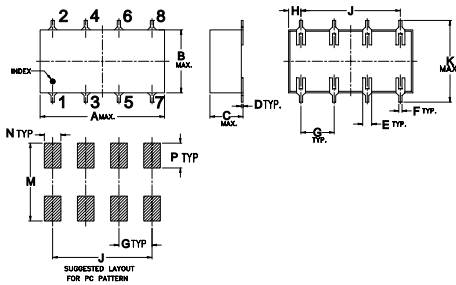
Maximum Ratings

Operating Temperature	-40°C to 85°C
Storage Temperature	-55°C to 100°C
RF Power Input	0.5W max.

Pin Connections

INPUT	1
OUTPUT	8
GROUND	2,3,4,5,6,7

Outline Drawing

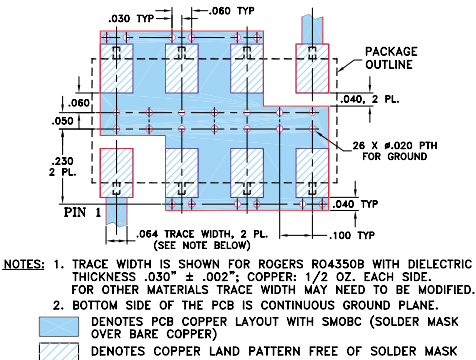


Outline Dimensions (inch/mm)

A	B	C	D	E	F	G
0.75	0.38	0.28	0.01	0.05	0.02	0.2
19.05	9.65	7.11	0.25	1.27	0.51	5.08

H	J	K	M	N	P	wt
0.07	0.6	0.45	0.47	0.1	0.15	grams
1.91	15.24	11.43	11.94	2.54	3.81	1.60

Demo Board MCL P/N: TB-187 Suggested PCB Layout (PL-049)



Features

- wide selection of cut-off frequencies
- excellent rejection
- custom models available

Applications

- defense communications
- receivers/transmitters
- harmonic rejection of VCOs

SCLF-5+
SCLF-5



CASE STYLE: YY161
PRICE: \$14.95 ea. QTY (1-9)

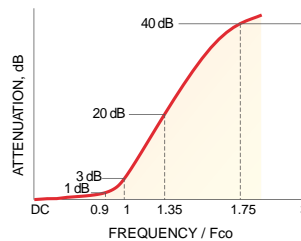
+ RoHS compliant in accordance
with EU Directive (2002/95/EC)

The +Suffix identifies RoHS Compliance. See our web site for RoHS Compliance methodologies and qualifications.

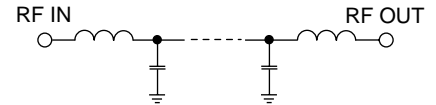
Low Pass Filter Electrical Specifications

PASSBAND (MHz)	f _{co} , (MHz) Nom.	STOPBAND (MHz)	VSWR (:1)
(loss < 1 dB)	(loss 3 dB)	(loss > 20 dB) (loss > 40 dB)	Pass band typ. Stop band typ.
DC-5	5.8	8-10 10-200	1.7 18

typical frequency response

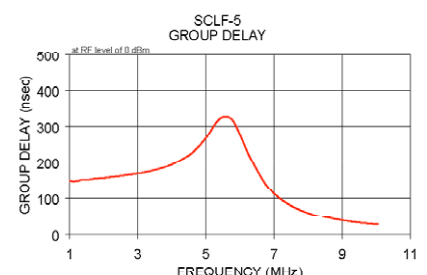
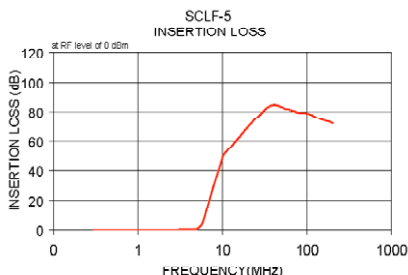


electrical schematic



Typical Performance Data

Frequency (MHz)	Insertion Loss (dB)	Return Loss (dB)	Frequency (MHz)	Group Delay (nsec)
\bar{x}	σ			
0.30	0.05	0.00	27.93	150.94
1.00	0.11	0.01	19.79	149.44
1.70	0.13	0.01	20.83	149.56
2.40	0.15	0.00	35.97	151.58
3.10	0.24	0.02	20.96	153.73
3.70	0.34	0.04	17.62	153.16
4.40	0.44	0.02	18.29	154.81
5.00	0.71	0.05	14.82	157.02
5.80	4.39	0.64	3.50	157.96
6.50	13.41	0.69	0.92	159.54
6.80	17.44	0.61	0.69	161.84
7.10	21.22	0.55	0.59	163.94
7.40	24.76	0.52	0.53	166.34
7.70	28.06	0.49	0.49	169.53
8.00	31.17	0.48	0.46	172.46
8.30	34.08	0.47	0.44	177.65
8.60	36.83	0.46	0.42	184.69
9.00	40.28	0.44	0.40	193.77
9.30	42.71	0.42	0.39	209.32
9.70	45.76	0.39	0.38	230.37
10.00	47.94	0.39	0.38	267.85
10.30	50.00	0.45	0.37	321.82
34.00	82.82	4.44	0.27	316.39
57.70	81.71	2.14	0.28	210.99
81.40	79.29	0.47	0.28	128.64
105.20	78.72	1.24	0.28	87.23
128.90	76.10	1.22	0.28	60.47
152.60	74.23	1.04	0.27	45.55
176.30	73.30	0.56	0.27	33.91
200.00	72.10	0.48	0.27	26.94



Mini-Circuits®

INTERNET <http://www.minicircuits.com>

P.O. Box 350166, Brooklyn, New York 11235-0003 (718) 934-4500 Fax (718) 332-4661

Distribution Centers NORTH AMERICA 800-654-7949 • 417-335-5935 • Fax 417-335-5945 • EUROPE 44-1252-832600 • Fax 44-1252-837010

Mini-Circuits ISO 9001 & ISO 14001 Certified

REV. C
M98898
SCLF-5
060515