

Power Splitter/Combiner

SCN-2-11+ SCN-2-11

2 Way-0° 50Ω

800 to 1175 MHz

Maximum Ratings

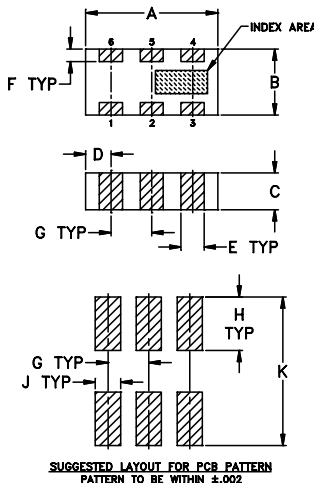
Operating Temperature	-55°C to 100°C
Storage Temperature	-55°C to 100°C
Power Input (as a splitter)	20W* max.

*derate linearly to 6W at 100°C ambient.

Pin Connections

SUM PORT	2
PORT 1	6
PORT 2	4
GROUND	1,3,5
PORT 1-2	resistor external 100 OHMS

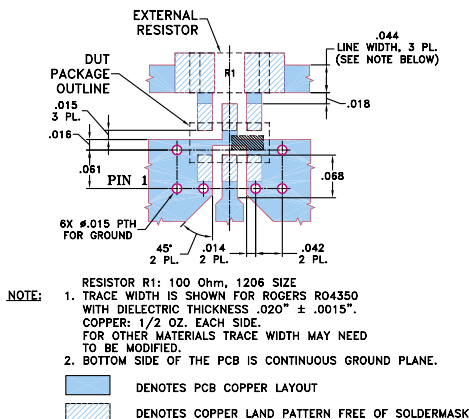
Outline Drawing



Outline Dimensions (inch)

A	B	C	D	E	F	
.126	.063	.037	.024	.022	.012	
3.20	1.60	0.94	0.61	0.56	0.30	
G	H	J	K			wt
.039	.042	.024	.123			grams
0.99	1.07	0.61	3.12			.020

Demo Board MCL P/N: TB-252 Suggested PCB Layout (PL-129)



Features

- isolation resistor, external 100 ohms
- low insertion loss, 0.5 dB typ.
- excellent amplitude unbalance, 0.1 dB typ.
- excellent phase unbalance, 1.0 deg. typ.
- high isolation, 22 dB typ.
- excellent power handling, 20W as splitter
- small size, 0.12"x0.06"x0.035"
- ESD non-sensitive
- temperature stable, LTCC technology
- wrap around terminations for excellent solderability
- low cost
- patent pending

Applications

- GSM
- ISM
- cellular



CASE STYLE: FV1206-1

PRICE: \$ 2.50 ea. QTY (10-49)

\$ 0.99 ea. QTY (100)

+ RoHS compliant in accordance
with EU Directive (2002/95/EC)

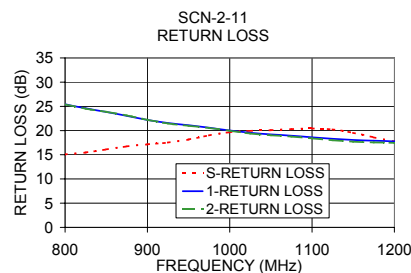
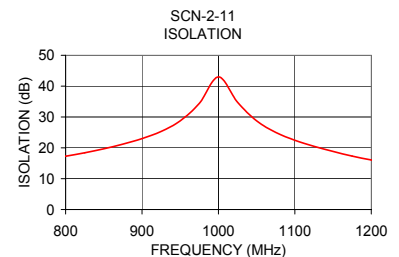
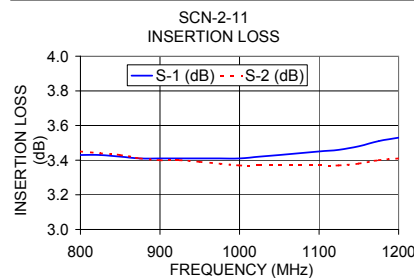
See our web site for RoHS Compliance methodologies
and qualifications.

Splitter Electrical Specifications

MODEL NO.	FREQUENCY (MHz)	INSERTION LOSS (dB) ABOVE 3.0 dB		ISOLATION (dB)	PHASE UNBALANCE (Degrees)		AMPLITUDE UNBALANCE (dB)		RETURN LOSS (dB)		
		Typ.	Max.	Typ. Min.	Typ.	Max.	Typ.	Max.	INPUT Typ.	OUTPUT Typ.	
SCN-2-11(+)	800-1175	0.5	0.8	20	15	1.0	3.0	0.1	0.3	16	18
	875-1125	0.5	0.8	22	18	1.0	3.0	0.1	0.3	16	20

Typical Performance Data

Frequency (MHz)	Insertion Loss (dB)		Amplitude Unbalance (dB)	Isolation (dB)	Phase Unbalance (deg.)	Return Loss (dB)		
	S-1	S-2				S	1	2
800.00	3.43	3.45	0.02	17.28	0.11	15.07	25.43	25.41
825.00	3.43	3.44	0.01	18.38	0.13	15.48	24.60	24.52
850.00	3.42	3.43	0.01	19.70	0.14	16.10	23.86	23.88
875.00	3.41	3.41	0.00	21.21	0.14	16.72	23.02	23.11
900.00	3.41	3.40	0.01	22.98	0.15	17.14	22.19	22.21
925.00	3.41	3.40	0.01	25.31	0.14	17.53	21.56	21.46
950.00	3.41	3.39	0.02	28.76	0.12	18.16	21.09	20.97
975.00	3.41	3.38	0.03	34.40	0.14	19.00	20.59	20.53
1000.00	3.41	3.37	0.04	42.99	0.16	19.65	20.02	19.96
1025.00	3.42	3.37	0.05	34.77	0.20	19.92	19.53	19.39
1050.00	3.43	3.37	0.06	28.77	0.23	20.08	19.20	19.01
1075.00	3.44	3.37	0.07	25.02	0.24	20.29	18.93	18.74
1100.00	3.45	3.37	0.08	22.45	0.27	20.43	18.61	18.40
1125.00	3.46	3.37	0.09	20.49	0.31	20.22	18.29	18.00
1150.00	3.48	3.38	0.10	18.83	0.34	19.53	18.05	17.69
1175.00	3.51	3.40	0.11	17.34	0.36	18.61	17.90	17.54



electrical schematic

