

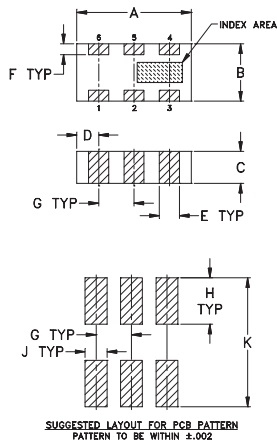
**2 Way-0° 50Ω****800 to 2700 MHz****BLUE CELL™**CASE STYLE: FV1206-1  
PRICE: \$2.50 ea. QTY (10-49)  
\$ .99 ea. QTY (100)**Maximum Ratings**

Operating Temperature	-55°C to 100°C
Storage Temperature	-55°C to 100°C
Power Input (as a splitter)	20W* max.

\*derate linearly to 6W at 100°C ambient.

**Pin Connections**

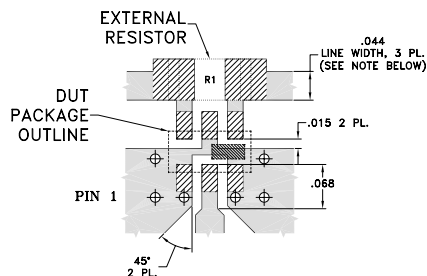
SUM PORT	2
PORT 1	6
PORT 2	4
GROUND	1,3,5
PORT 1-2	resistor external 100 OHMS

**Outline Drawing**

TOLERANCE UNLESS OTHERWISE STATED

2 PLACE DECIMALS: ±.01  
3 PLACE DECIMALS: ±.005**Outline Dimensions (inch)**

A	B	C	D	E	F	G
.126	.063	.035	.024	.022	.012	.039
3.20	1.60	0.89	0.61	0.56	0.30	0.99
H	J	K	wt.			
.042	.024	.123	grams			
1.07	0.61	3.12	.020			

**Demo Board MCL P/N: TB-252**  
**Suggested PCB Layout (PL-129)**

RESISTOR R1: 100 Ohm, 1206 SIZE

- NOTE:**
1. TRACE WIDTH IS SHOWN FOR ROGERS RO4350 WITH DIELECTRIC THICKNESS .020" ± .0015". COPPER: 1/2 OZ. EACH SIDE. FOR OTHER MATERIALS TRACE WIDTH MAY NEED TO BE MODIFIED.
  2. LOCATION OF PTH'S DESIGNATED ACCORDING TO ARTWORK OF TEST BOARD B14-TB-252 (CONTACT MINI-CIRCUITS).
  3. BOTTOM SIDE OF THE PCB IS CONTINUOUS GROUND PLANE.

DENOTES PCB COPPER LAYOUT

DENOTES COPPER LAND PATTERN FREE OF SOLDERMASK

**Features**

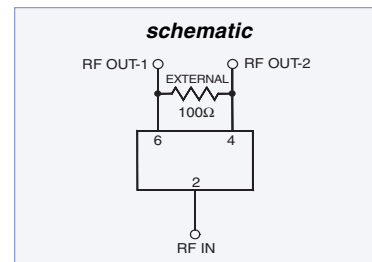
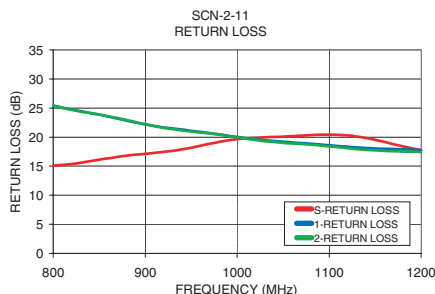
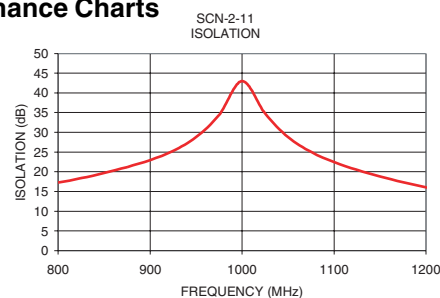
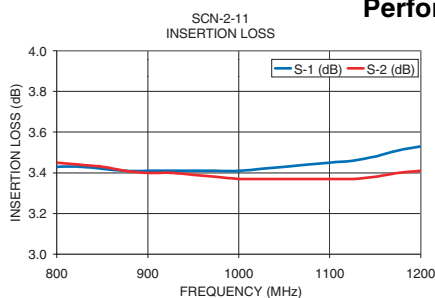
- isolation resistor, external 100 ohms
- low insertion loss, 0.4 dB typ.
- excellent amplitude unbalance, 0.1 dB typ.
- very good phase unbalance, 1.0 deg. typ.
- high isolation, 22 dB typ.
- excellent power handling, 20W as splitter
- small size, 0.12"X0.06"X0.035"
- ESD non-sensitive
- temperature stable, BLUE CELL™ technology
- wrap around, solder plated terminations for excellent solderability
- low cost
- patent pending

**Applications**

- PCS, DECT
- WLAN
- GSM, GPS
- ISM applications

**Splitter Electrical Specifications**

MODEL NO.	FREQUENCY (MHz)	INSERTION LOSS (dB)		ISOLATION (dB)	PHASE UNBALANCE (Degrees)		AMPLITUDE UNBALANCE (dB)		RETURN LOSS (dB)		
		ABOVE 3.0 dB							INPUT	OUTPUT	
		Typ.	Max.		Typ.	Min.	Typ.	Max.	Typ.	Max.	Typ.
SCN-2-11	800-1175	0.5	0.8	20	15	1.0	3.0	0.1	0.3	16	18
	875-1125	0.5	0.8	22	18	1.0	3.0	0.1	0.3	16	20
SCN-2-15	1100-1450	0.5	0.8	23	17	1.5	3.0	0.25	0.4	15	17.5
	1200-1375	0.4	0.7	25	20	1.5	3.0	0.2	0.3	16	18
SCN-2-19	1425-1900	0.5	0.9	23	17	2.5	4.0	0.25	0.4	15	18
	1550-1800	0.5	0.9	25	20	2.0	4.0	0.2	0.4	19	18
SCN-2-22	1850-2200	0.5	0.9	22	17	2.0	5.0	0.25	0.4	16	19
	1900-2100	0.5	0.9	24	20	2.0	5.0	0.2	0.4	16	19
SCN-2-27	2225-2700	0.5	1.1	21	17	3.5	6.0	0.6	0.8	19	17
	2325-2600	0.4	1.0	23	20	2.5	6.0	0.4	0.7	20	17

**Performance Charts**

## Performance Charts

