

# Power Splitter/Combiner

## SCN-3-28+ SCN-3-28

3 Way-0° 50Ω

1600 to 2800 MHz

### Maximum Ratings

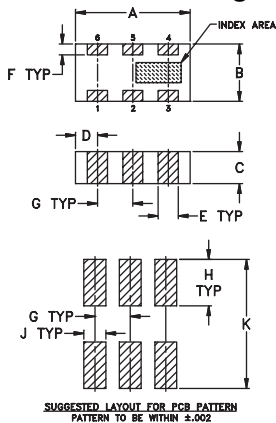
Operating Temperature	-55°C to 100°C
Storage Temperature	-55°C to 100°C
Power Input (as a splitter)	15W* max.

\*derate linearly to 6W at 100°C ambient.

### Pin Connections

SUM PORT	2
PORT 1	6
PORT 2	5
PORT 3	4
GROUND	1,3
PORT 1-2, 2-3	resistor external 124 OHMS
PORT 1-3	resistor external 127 OHMS

### Outline Drawing



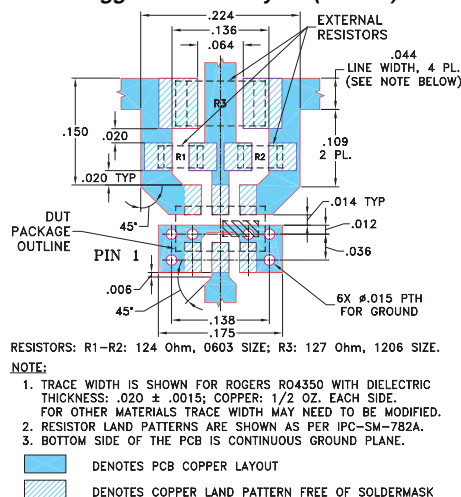
### Outline Dimensions (inch)

A	B	C	D	E	F
.126	.063	.037	.024	.022	.012
3.20	1.60	0.94	0.61	0.56	0.30

G	H	J	K	wt
.039	.042	.024	.123	grams
0.99	1.07	0.61	3.12	.020

### Demo Board MCL P/N: TB-303 Suggested PCB Layout (PL-171)



### Features

- isolation resistors, external
- low insertion loss, 0.8 dB typ.
- excellent amplitude unbalance, 0.2 dB typ.
- very good phase unbalance, 5 deg. typ.
- high isolation, 12 dB typ.
- excellent power handling, 15W as splitter
- small size, 0.12"X0.06"X0.035"
- ESD non-sensitive
- temperature stable LTCC technology
- wrap around, terminations for excellent solderability
- low cost
- patent pending

### Applications

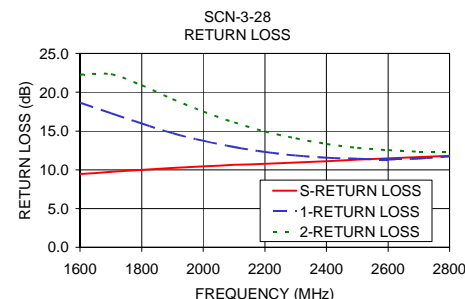
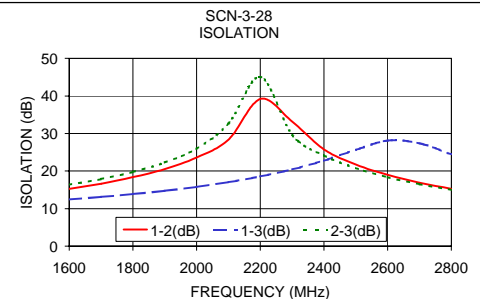
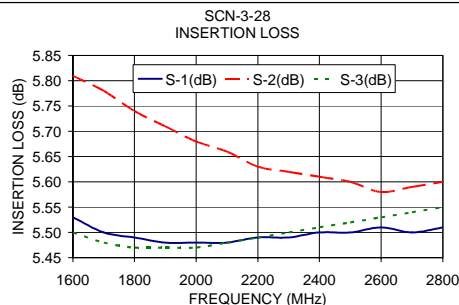
- PCS, DECT
- DSS
- WLAN
- satellite communication
- line of sight communication
- ISM applications
- WLL
- defense applications

### Splitter Electrical Specifications

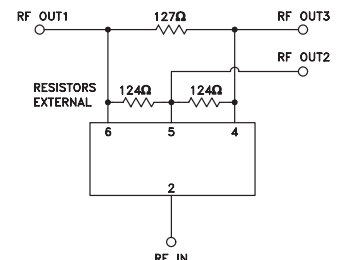
MODEL NO.	FREQUENCY (MHz)	INSERTION LOSS (dB) ABOVE 4.8 dB		ISOLATION (dB)	PHASE UNBALANCE (Degrees)	AMPLITUDE UNBALANCE (dB)	RETURN LOSS (dB)				
		Typ.	Max.				INPUT Typ.	OUTPUT Typ.			
SCN-3-28(+)	1600-2800	0.8	1.2	12	10	5	8	0.2	0.6	10	12
	1800-2000	0.8	1.2	14	12	5	8	0.2	0.6	10	13
	2000-2200	0.8	1.2	16	13	5	8	0.2	0.5	11	12
	2400-2500	0.8	1.2	20	17	5	8	0.2	0.5	11	12

### Typical Performance Data

Freq. (MHz)	Insertion Loss (dB)			Amp. Unbal. (dB)	Isolation (dB)			Phase Unbal. (deg.)	Return Loss (dB)		
	S-1	S-2	S-3		1-2	1-3	2-3		S	1	2
1600.00	5.53	5.81	5.50	0.31	15.27	12.43	16.36	3.29	9.44	18.66	22.27
1700.00	5.50	5.78	5.48	0.29	16.66	13.09	17.87	3.64	9.73	17.30	22.33
1800.00	5.49	5.74	5.47	0.27	18.38	13.86	19.78	3.99	9.99	15.95	20.89
1900.00	5.48	5.71	5.47	0.24	20.57	14.75	22.29	4.31	10.23	14.71	19.12
2000.00	5.48	5.68	5.47	0.21	23.60	15.80	25.98	4.62	10.44	13.73	17.52
2100.00	5.48	5.66	5.48	0.18	28.40	17.05	32.67	4.79	10.63	12.94	16.11
2200.00	5.49	5.63	5.49	0.15	39.20	18.57	45.10	4.99	10.78	12.30	14.93
2300.00	5.49	5.62	5.50	0.12	33.16	20.43	29.60	5.06	10.95	11.85	14.05
2400.00	5.50	5.61	5.51	0.11	25.77	22.80	24.16	5.14	11.12	11.56	13.33
2500.00	5.50	5.60	5.52	0.09	21.75	25.66	20.80	5.14	11.30	11.41	12.83
2600.00	5.51	5.58	5.53	0.08	18.99	28.11	18.37	5.02	11.49	11.33	12.54
2700.00	5.50	5.59	5.54	0.08	16.91	27.40	16.50	4.88	11.65	11.46	12.34
2800.00	5.51	5.60	5.55	0.09	15.25	24.44	14.98	4.68	11.79	11.72	12.35



### electrical schematic



## Mini-Circuits®

Distribution Centers NORTH AMERICA 800-654-7949 • 417-335-5935 • Fax 417-335-5945 • EUROPE 44-1252-832600 • Fax 44-1252-837010

Mini-Circuits ISO 9001 &amp; ISO 14001 Certified

INTERNET <http://www.minicircuits.com>

P.O. Box 350166, Brooklyn, New York 11235-0003 (718) 934-4500 Fax (718) 332-4661



REV. A  
M98898  
SCN-3-28  
ED-11736/5  
AD/DJ/CP  
060109