

# Surface Mount Frequency Mixer

Level 7 (LO Power +7 dBm) 2500 to 6000 MHz

**SKY-60+  
SKY-60**



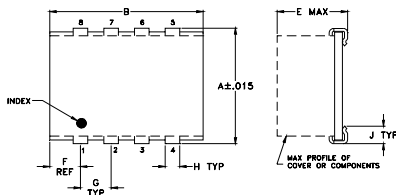
## Maximum Ratings

Operating Temperature	-40°C to 85°C
Storage Temperature	-55°C to 100°C
RF Power	200mW
IF Current	40mA

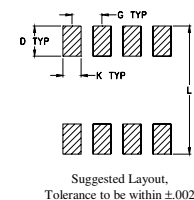
## Pin Connections

LO	5
RF	1
IF	7
GROUND	2,3,4,6,8

## Outline Drawing



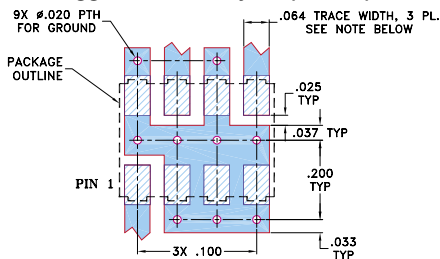
### PCB Land Pattern



## Outline Dimensions (inch)

A	B	C	D	E	F	G	H	J	K	L	wt
.305	.390	--	.100	.105	.045	.100	.047	.065	.065	.325	grams
7.75	9.91	--	2.54	2.67	1.14	2.54	1.19	1.65	1.65	8.26	0.20

## Demo Board MCL P/N: TB-11 Suggested PCB Layout (PL-056)



### NOTES:

- TRACE WIDTH IS SHOWN FOR ROGERS R04350B WITH DIELECTRIC THICKNESS .030" ± .002". COPPER: 1/2 OZ. EACH SIDE. FOR OTHER MATERIALS TRACE WIDTH MAY NEED TO BE MODIFIED.
  - BOTTOM SIDE OF THE PCB IS CONTINUOUS GROUND PLANE.
- DENOTES PCB COPPER LAYOUT WITH SMOBC (SOLDER MASK OVER BARE COPPER)  
 DENOTES COPPER LAND PATTERN FREE OF SOLDER MASK

## Features

- wide bandwidth, 2500 to 6000 MHz.
- low conversion loss, 6.2 dB typ.
- good L-R isolation, 28 dB typ.
- J-leads for strain relief

## Applications

- line of sight links
- fixed satellite

CASE STYLE: BJ398

PRICE: \$14.95 ea. QTY (1-9)

**+ RoHS compliant in accordance with EU Directive (2002/95/EC)**

The +Suffix identifies RoHS Compliance. See our web site for RoHS Compliance methodologies and qualifications.

## Electrical Specifications

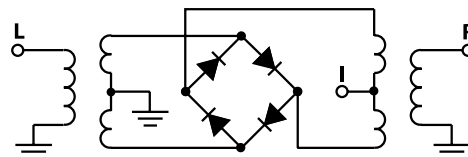
FREQUENCY (MHz)		CONVERSION LOSS (dB)		LO-RF ISOLATION (dB)		LO-IF ISOLATION (dB)		IP3 at center band (dBm)	
LO/RF	IF	Mid-Band	Total Range Max.	Typ.	Min.	Typ.	Min.	Typ.	
$f_L$ - $f_U$		$\bar{X}$	$\sigma$						
2500-6000	DC-1500	6.2	.20	9.7	28	17	14	8	11

1 dB COMP.: +1 dBm typ.

## Typical Performance Data

Frequency (MHz)		Conversion Loss (dB)	Isolation L-R (dB)	Isolation L-I (dB)	VSWR RF Port (:1)	VSWR LO Port (:1)
RF	LO	LO +7dBm	LO +7dBm	LO +7dBm	LO +7dBm	LO +7dBm
2500.00	2530.00	6.39	28.60	17.65	3.17	4.99
2698.11	2728.11	6.24	26.41	16.56	3.12	4.03
2896.23	2926.23	6.11	23.87	14.61	3.10	3.30
3000.00	3030.00	6.13	22.62	13.96	2.94	3.18
3292.45	3322.45	6.12	21.77	12.75	2.22	2.85
3490.57	3520.57	6.26	22.01	12.06	1.80	2.67
3688.68	3718.68	6.70	22.43	11.80	1.59	2.80
3886.79	3916.79	6.59	26.67	12.03	1.50	2.61
3952.83	3982.83	6.54	27.93	12.54	1.54	2.57
4000.00	4030.00	6.54	27.51	13.08	1.61	2.74
4283.02	4253.02	6.56	33.35	15.58	2.00	3.01
4547.17	4517.17	6.66	35.36	17.59	2.32	3.07
4811.32	4781.32	6.83	31.67	19.88	2.56	2.88
4943.40	4913.40	6.96	30.01	21.24	2.59	2.94
5000.00	4970.00	6.95	30.27	21.94	2.60	2.95
5273.58	5243.58	7.16	28.84	24.64	2.37	3.75
5537.74	5507.74	7.37	27.52	27.13	2.29	4.09
5801.89	5771.89	7.51	26.80	29.17	2.45	5.12
5867.92	5837.92	7.52	26.60	29.78	2.66	5.33
6000.00	5970.00	7.71	26.91	30.39	2.85	5.87

## Electrical Schematic



**Mini-Circuits®**

INTERNET <http://www.minicircuits.com>

P.O. Box 350166, Brooklyn, New York 11235-0003 (718) 934-4500 Fax (718) 332-4661

Distribution Centers NORTH AMERICA 800-654-7949 • 417-335-5935 • Fax 417-335-5945 • EUROPE 44-1252-832600 • Fax 44-1252-837010

Mini-Circuits ISO 9001 & ISO 14001 Certified



REV. A  
M98898  
SKY-60  
DJ/TD/CP/AM  
060607  
Page 1 of 2

## Performance Charts

