

# Surface Mount Frequency Mixer

Level 10 (LO Power +10 dBm) 2500 to 6000 MHz

## SKY-60LH+ SKY-60LH



### Maximum Ratings

Operating Temperature	-40°C to 85°C
Storage Temperature	-55°C to 100°C
RF Power	50mW
IF Current	40mA

### Pin Connections

LO	1
RF	5
IF	7
GROUND	2,3,4,6,8

### Features

- low conversion loss, 6.2 dB typ.
- good L-R isolation, 28 dB typ.
- J-leads for strain relief

### Applications

- line of sight links
- fixed satellite

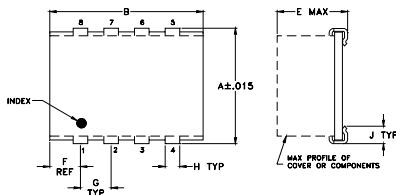
CASE STYLE: BJ398

PRICE: \$16.95 ea. QTY (1-9)

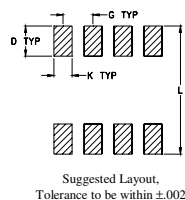
**+ RoHS compliant in accordance  
with EU Directive (2002/95/EC)**

The +Suffix identifies RoHS Compliance. See our web site  
for RoHS Compliance methodologies and qualifications.

### Outline Drawing



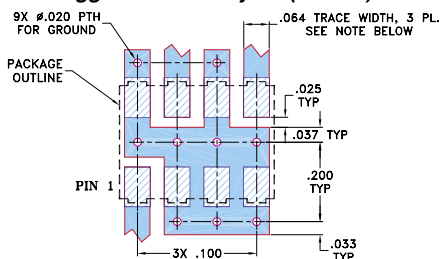
### PCB Land Pattern



### Outline Dimensions ( inch )

A	B	C	D	E	F	G	H	J	K	L	wt
.305	.390	--	.100	.105	.045	.100	.047	.065	.065	.325	grams
7.75	9.91	--	2.54	2.67	1.14	2.54	1.19	1.65	1.65	8.26	0.20

### Demo Board MCL P/N: TB-11 Suggested PCB Layout (PL-056)



#### NOTES:

1. TRACE WIDTH IS SHOWN FOR ROGERS R04350B WITH DIELECTRIC THICKNESS .030" ± .002". COPPER: 1/2 OZ. EACH SIDE. FOR OTHER MATERIALS TRACE WIDTH MAY NEED TO BE MODIFIED.
2. BOTTOM SIDE OF THE PCB IS CONTINUOUS GROUND PLANE.

- DENOTES PCB COPPER LAYOUT WITH SMOBC (SOLDER MASK OVER BARE COPPER)
- DENOTES COPPER LAND PATTERN FREE OF SOLDER MASK

### Electrical Specifications

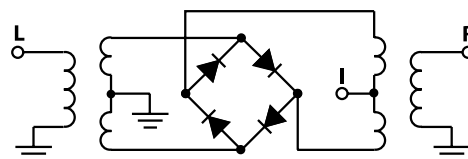
FREQUENCY (MHz)		CONVERSION LOSS (dB)				LO-RF ISOLATION (dB)		LO-IF ISOLATION (dB)		IP3 at center band (dBm)
		Mid-Band m	Total Range Max.			Typ.	Min.	Typ.	Min.	
2500-6000	DC-1500	6.2	.20	—	9.7	28	17	14	8	15

1 dB COMP.: +5 dBm typ.

### Typical Performance Data

Frequency (MHz)		Conversion Loss (dB)	Isolation L-R (dB)	Isolation L-I (dB)	VSWR RF Port (:1)	VSWR LO Port (:1)
RF	LO	LO +7dBm	LO +7dBm	LO +7dBm	LO +7dBm	LO +7dBm
2500.00	2530.00	6.75	31.14	15.39	3.22	6.15
2698.11	2728.11	6.40	28.43	13.78	2.90	4.50
2896.23	2926.23	6.39	25.62	12.30	2.77	3.69
3000.00	3030.00	5.79	22.84	11.67	5.28	2.80
3292.45	3322.45	6.15	23.74	11.01	2.08	3.00
3490.57	3520.57	6.36	24.42	10.80	1.72	2.81
3576.92	3606.92	6.30	22.84	11.00	3.69	1.56
3846.15	3876.15	6.23	23.33	11.33	3.36	1.42
3952.83	3982.83	6.39	28.51	12.36	1.42	2.56
4000.00	4030.00	6.00	25.17	12.17	3.35	1.69
4283.02	4253.02	6.61	36.12	15.17	1.73	2.72
4500.00	4530.00	5.90	40.00	15.84	3.68	1.85
4653.85	4683.85	5.79	34.00	17.00	3.69	1.90
4923.08	4953.08	5.27	30.11	19.22	2.21	2.32
5000.00	5030.00	5.30	30.68	19.73	2.19	2.29
5192.31	5222.31	6.30	27.83	22.50	2.80	2.17
5461.54	5491.54	6.97	26.34	25.00	3.18	2.41
5537.74	5507.74	7.46	26.73	22.47	2.00	2.61
5801.89	5771.89	8.23	26.31	23.54	2.08	2.98
6000.00	5970.00	8.33	27.22	24.32	2.49	3.30

### Electrical Schematic



**Mini-Circuits®**

Distribution Centers NORTH AMERICA 800-654-7949 • 417-335-5935 • Fax 417-335-5945 • EUROPE 44-1252-832600 • Fax 44-1252-837010

Mini-Circuits ISO 9001 & ISO 14001 Certified

INTERNET <http://www.minicircuits.com>



REV. A  
M98898  
SKY-60LH  
DJ/TD/CP/AM  
060602  
Page 1 of 2

## Performance Charts

