

Surface Mount Frequency Mixer

SKY-7G+ SKY-7G

Level 7 (LO Power +7 dBm) 2000 to 7000 MHz

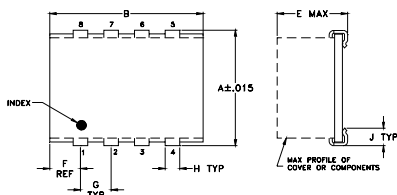
Maximum Ratings

Operating Temperature	-40°C to 85°C
Storage Temperature	-55°C to 100°C
RF Power	50mW
IF Current	40mA

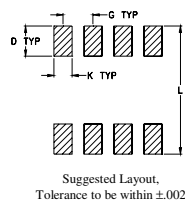
Pin Connections

LO	1
RF	5
IF	7
GROUND	2,3,4,6,8

Outline Drawing



PCB Land Pattern

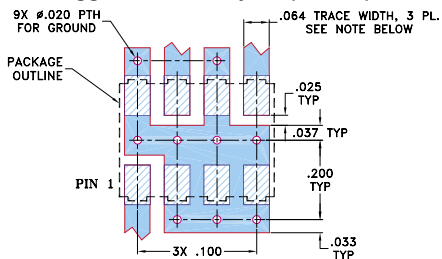


Outline Dimensions (inch)

A	B	C	D	E	F	G
.305	.390	--	.100	.105	.045	.100
7.75	9.91	--	2.54	2.67	1.14	2.54

H	J	K	L	wt
.047	.065	.065	.325	grams
1.19	1.65	1.65	8.26	0.20

Demo Board MCL P/N: TB-11 Suggested PCB Layout (PL-056)



NOTES:

- TRACE WIDTH IS SHOWN FOR ROGERS R04350B WITH DIELECTRIC THICKNESS .030" ± .002". COPPER: 1/2 OZ. EACH SIDE. FOR OTHER MATERIALS TRACE WIDTH MAY NEED TO BE MODIFIED.
- BOTTOM SIDE OF THE PCB IS CONTINUOUS GROUND PLANE.

- DENOTES PCB COPPER LAYOUT WITH SMOBC (SOLDER MASK OVER BARE COPPER)
- DENOTES COPPER LAND PATTERN FREE OF SOLDER MASK

Features

- wide bandwidth, 2000 to 7000 MHz
- IF response, usable to 2000 MHz
- low conversion, 7.0 dB typ.
- IP3, 11 dBm typ.
- J-leads for strain relief

Applications

- line of sight links
- satellite up & down converters
- wireless LAN



CASE STYLE: BJ398

PRICE: \$16.95 ea. QTY (1-9)

+ RoHS compliant in accordance with EU Directive (2002/95/EC)

The +Suffix identifies RoHS Compliance. See our web site for RoHS Compliance methodologies and qualifications.

Electrical Specifications

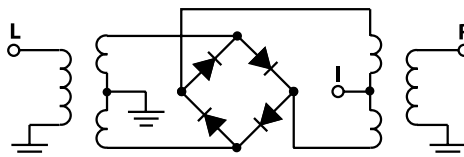
FREQUENCY (MHz)		CONVERSION LOSS (dB)			LO-RF ISOLATION (dB)		LO-IF ISOLATION (dB)		IP3 at center band (dBm)
LO/RF f _L -f _U	IF	Mid-Band		Total Range Max.	Typ. Min.		Typ. Min.		
		\bar{X}	σ						
2000-7000	DC-1000	7.0	.10	9.8	28	15	20	7	11

1 dB COMP.: +1 dBm typ.

Typical Performance Data

Frequency (MHz)		Conversion Loss (dB)	Isolation L-R (dB)	Isolation L-I (dB)	VSWR RF Port (:1)	VSWR LO Port (:1)
RF	LO	LO +7dBm	LO +7dBm	LO +7dBm	LO +7dBm	LO +7dBm
2000.00	2030.00	8.06	34.92	14.09	2.69	6.20
2566.04	2596.04	6.24	25.63	14.30	1.98	3.67
2849.06	2879.06	6.39	22.59	12.59	1.85	2.81
3000.00	3030.00	6.57	22.41	12.50	1.89	2.56
3320.75	3350.75	7.01	23.29	12.87	1.87	2.58
3509.43	3539.43	7.20	24.83	13.12	1.84	2.69
4000.00	4030.00	7.11	30.95	17.74	1.80	2.80
4358.49	4388.49	7.50	29.44	20.61	2.69	2.70
4452.83	4482.83	7.49	28.13	21.25	2.91	2.80
4547.17	4517.17	7.60	27.76	21.90	3.18	2.80
5000.00	4970.00	7.81	27.00	26.15	3.36	3.38
5301.89	5271.89	8.17	26.79	27.76	3.16	4.09
5584.91	5554.91	8.34	26.63	28.42	2.78	4.59
5679.25	5649.25	8.80	27.15	28.49	2.71	4.65
5773.59	5743.59	8.85	27.89	28.51	2.62	5.02
6000.00	5970.00	8.03	26.63	28.32	2.42	4.94
6245.28	6215.28	7.45	24.75	28.56	2.16	5.04
6622.64	6592.64	7.37	21.88	28.81	1.83	4.95
6811.32	6781.32	7.26	20.79	29.46	1.64	5.24
7000.00	6970.00	7.21	19.91	30.33	1.43	5.06

Electrical Schematic



Mini-Circuits®

Distribution Centers NORTH AMERICA 800-654-7949 • 417-335-5935 • Fax 417-335-5945 • EUROPE 44-1252-832600 • Fax 44-1252-837010

Mini-Circuits ISO 9001 & ISO 14001 Certified

INTERNET <http://www.minicircuits.com>



Available Tape & Reel

REV. A
M98898
SKY-7G
ED-3968/5
DJ/TD/CP/AM
060608
Page 1 of 2

Performance Charts

SKY-7G+ SKY-7G

