

Coaxial Low Pass Filter

50Ω DC to 190 MHz

Maximum Ratings

Operating Temperature	-55°C to 100°C
Storage Temperature	-55°C to 100°C
RF Power Input	0.5W max.

Features

- good attenuation rate, 1.35 typ. 20dB/3dB BW ratio
- rugged shielded case
- other SLP models available with wide selection of cut-off frequencies

Applications

- lab use
- test equipment
- video equipment

SLP-200+
SLP-200



CASE STYLE: FF99

Connectors	Model	Price	Qty.
SMA	SLP-200(+)	\$34.95 ea.	(1-9)

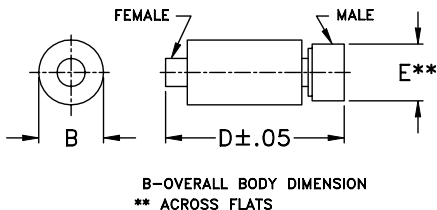
+ RoHS compliant in accordance with EU Directive (2002/95/EC)

The +Suffix identifies RoHS Compliance. See our web site for RoHS Compliance methodologies and qualifications.

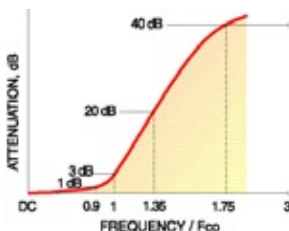
Low Pass Filter Electrical Specifications

PASSBAND (MHz)	fco (MHz) Nom.	STOPBAND (MHz)	VSWR (:1)
(loss < 1 dB)	(loss 3 dB)	(loss > 20 dB) (loss > 40 dB)	Passband Typ. Stopband Typ.
DC-190	210	290-390 390-800	1.7 18

Outline Drawing



typical frequency response

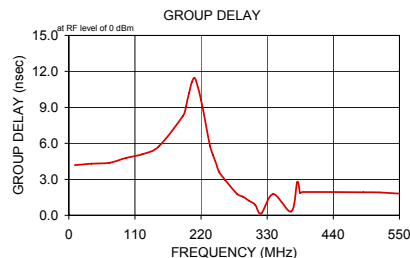
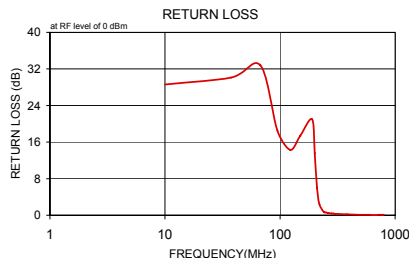
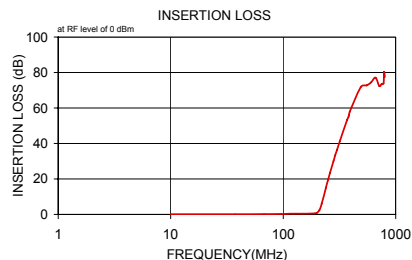


electrical schematic



Typical Performance Data

Frequency (MHz)	Insertion Loss (dB)	Return Loss (dB)	Frequency (MHz)	Group Delay (nsec)
	\bar{x} σ			
10.00	0.08 0.1	28.6	10.00	4.18
37.50	0.12 0.1	30.1	37.50	4.31
67.50	0.15 0.1	32.8	67.50	4.38
95.00	0.26 0.1	18.5	95.00	4.78
122.50	0.43 0.1	14.3	122.50	5.09
150.00	0.39 0.1	17.4	150.00	5.75
190.00	0.58 0.1	21.0	190.00	8.30
200.00	0.96 0.2	13.6	195.00	9.07
210.00	2.52 0.7	5.9	200.00	10.18
220.00	6.01 1.1	2.4	205.00	11.13
240.00	15.07 1.3	0.7	210.00	11.42
250.00	19.34 1.3	0.6	220.00	9.61
260.00	23.25 1.4	0.5	235.00	5.78
280.00	30.20 1.5	0.4	240.00	5.00
290.00	33.33 1.5	0.4	245.00	4.34
300.00	36.17 1.5	0.3	250.00	3.63
320.00	41.60 1.8	0.3	260.00	2.95
370.00	53.41 2.3	0.2	280.00	1.79
380.00	55.00 2.8	0.2	290.00	1.54
385.00	56.23 2.7	0.2	300.00	1.21
390.00	57.87 4.0	0.2	310.00	0.88
490.00	71.86 7.9	0.1	320.00	0.15
550.00	72.71 1.6	0.1	340.00	1.77
602.50	74.42 2.5	0.1	370.00	0.31
660.00	77.14 4.3	0.0	380.00	2.76
715.00	72.38 5.7	0.1	385.00	1.86
750.00	73.49 3.5	0.1	390.00	1.94
780.00	73.91 4.7	0.1	490.00	1.92
790.00	80.33 5.3	0.1	517.50	1.91
800.00	77.51 9.6	0.1	550.00	1.81



Mini-Circuits®

Distribution Centers NORTH AMERICA 800-654-7949 • 417-335-5935 • Fax 417-335-5945 • EUROPE 44-1252-832600 • Fax 44-1252-837010

Mini-Circuits ISO 9001 & ISO 14001 Certified

INTERNET <http://www.minicircuits.com>

P.O. Box 350166, Brooklyn, New York 11235-0003 (718) 934-4500 Fax (718) 332-4661

REV. A
M98898
SLP-200
060712