

# Low Pass Filter

SLP-90

50Ω DC to 81 MHz

## Maximum Ratings

Operating Temperature	-55°C to 100°C
Storage Temperature	-55°C to 100°C
RF Power Input	0.5W max.

## Features

- good attenuation rate, 1.35 typ. 20dB/3dB BW ratio
- rugged shielded case
- other SLP models available with wide selection of cut-off frequencies

## Applications

- lab use
- test equipment
- video equipment



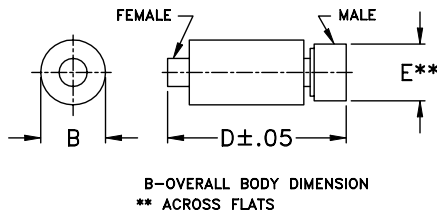
CASE STYLE: FF99

Connectors	Model	Price	Qty.
SMA	SLP-90	\$34.95 ea.	(1-9)

## Low Pass Filter Electrical Specifications

PASSBAND (MHz)	fco (MHz) Nom.	STOPBAND (MHz)	VSWR (:1)
(loss < 1 dB)	(loss 3 dB)	(loss > 20 dB) (loss > 40 dB)	Passband Typ. Stopband Typ.
DC-81	90	121-157 157-400	1.7 18

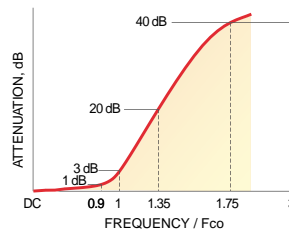
## Outline Drawing



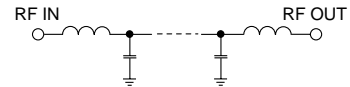
## Outline Dimensions (inch/mm)

B	D	E	wt
.67	1.98	.312	grams
17.02	50.29	7.92	42.0

## typical frequency response



## electrical schematic



## Typical Performance Data

Frequency (MHz)	Insertion Loss (dB)	Return Loss (dB)	Frequency (MHz)	Group Delay (nsec)
	$\bar{x}$ $\sigma$			
1.00	0.05 0.1	42.0	1.00	9.672
12.50	0.14 0.1	37.5	12.50	9.503
24.00	0.18 0.1	27.7	24.00	9.491
35.50	0.31 0.1	18.7	35.50	9.776
46.50	0.42 0.1	14.9	46.50	10.240
58.00	0.43 0.1	16.1	58.00	11.244
81.00	0.69 0.1	17.0	81.00	15.573
87.00	1.28 0.4	9.7	84.00	17.894
90.00	2.01 0.5	7.6	87.00	19.997
93.00	6.43 0.9	3.8	90.00	24.263
97.00	8.74 1.0	1.7	93.00	21.734
104.01	12.94 1.1	0.8	97.00	17.532
111.00	16.72 1.2	0.5	104.00	15.893
115.52	21.91 1.2	0.1	111.00	12.218
121.03	26.16 1.2	0.2	115.50	5.804
130.03	32.40 1.3	0.3	121.00	5.229
140.04	38.50 1.4	0.3	130.00	3.892
145.04	41.31 1.4	0.3	135.00	2.740
150.04	43.98 1.5	0.3	140.00	0.487
155.05	46.76 1.7	0.3	145.00	0.841
157.05	47.69 1.8	0.3	150.00	2.060
184.06	60.11 2.9	0.3	155.00	7.687
206.57	66.87 1.4	0.3	157.00	5.680
229.58	75.03 5.6	0.2	184.00	5.380
252.57	74.83 7.6	0.2	195.50	5.060
298.08	76.96 7.1	0.1	206.50	4.740
321.08	75.07 4.9	0.1	218.00	4.320
355.57	73.10 4.4	0.1	229.50	4.010
378.08	75.50 4.8	0.1	241.00	3.760
400.07	74.56 6.3	0.1	252.50	3.450

