

50Ω 180° Voltage Variable 13 to 16 MHz

Maximum Ratings

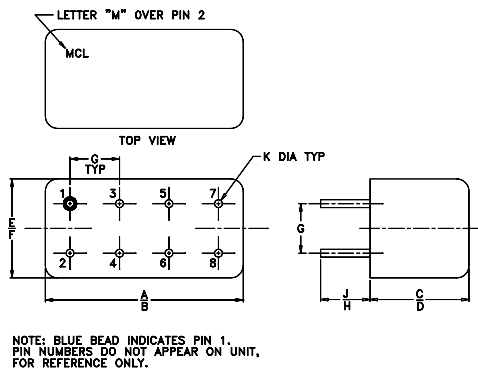
Operating Temperature	-55°C to 100°C
Storage Temperature	-55°C to 100°C
RF Input Power	20 dBm max.
Control Voltage	15V

Pin Connections

IN	1
OUT	7
BIAS	4,6 [^]
GROUND	2,3,5,8
CASE GROUND	2,3,5,8

[^] pins must be connected together externally

Outline Drawing



Outline Dimensions (inch/mm)

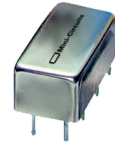
A	B	C	D	E	F
.770	.800	.385	.400	.370	.400
19.56	20.32	9.78	10.16	9.40	10.16
G	H	J	K	wt	
.200	.20	.14	.031	grams	
5.08	5.08	3.56	0.79	5.2	

Features

- low insertion loss, 1.2 dB typ.
- hermetically sealed

Applications

- signal processing



CASE STYLE: A01

PRICE: \$32.20 ea. QTY (1-9)

Phase Shifter Electrical Specifications

FREQUENCY (MHz)	PHASE RANGE (Degrees)	INSERTION LOSS (dB)		CONTROL VOLTAGE (V)	CONTROL BANDWIDTH (kHz)	VSWR (:1)	
		Typ.	Max.			Typ.	Max.
13-16	180	1.2	2.5	0-7	DC-50	1.2	1.7

Maximum operating power, 0 dBm

Typical Performance Data

Control Voltage (V)	Phase Shift* (degrees)			VSWR (:1)			Insertion Loss (dB)		
	13 MHz	14 MHz	16 MHz	13 MHz	14 MHz	16 MHz	13 MHz	14 MHz	16 MHz
0.00	0.00	0.00	0.00	1.17	1.12	1.39	1.39	1.15	1.00
1.00	57.44	41.06	18.65	1.27	1.18	1.38	1.82	1.61	1.22
2.00	108.31	88.40	42.06	1.27	1.23	1.36	1.65	1.86	1.50
3.00	144.57	133.55	74.05	1.22	1.20	1.36	1.25	1.66	1.84
4.00	168.76	168.44	115.77	1.18	1.13	1.35	0.96	1.28	2.05
5.00	185.36	193.01	160.59	1.15	1.06	1.31	0.77	0.97	1.85
6.00	197.26	210.26	198.14	1.14	1.01	1.26	0.66	0.78	1.42
7.00	206.27	222.75	225.09	1.13	1.02	1.25	0.59	0.66	1.07

*Normalized at control voltage=0V

