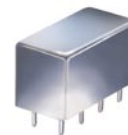


Plug-In Frequency Mixer

Level 13 (LO Power +13 dBm) 0.5 to 500 MHz

SRA-1MH+



CASE STYLE: A01
PRICE: \$18.20 ea. QTY (1-9)

Maximum Ratings

Operating Temperature	-55°C to 100°C
Storage Temperature	-55°C to 100°C
RF Power	200mW
IF Current	40mA

Pin Connections

LO	8
RF	1
IF	3,4 [^]
GROUND	2,5,6,7
CASE GROUND	2

[^] pins must be connected together externally

Features

- excellent conversion loss, 5.65 dB typ.
- high L-R isolation, 45 dB typ. L-I isolation, 40 dB typ.
- rugged welded construction
- hermetic

Applications

- VHF
- defense & federal communications
- FM broadcast radio

**+ RoHS compliant in accordance
with EU Directive (2002/95/EC)**

The +Suffix has been added in order to identify RoHS Compliance. See our web site for RoHS Compliance methodologies and qualifications.

Electrical Specifications

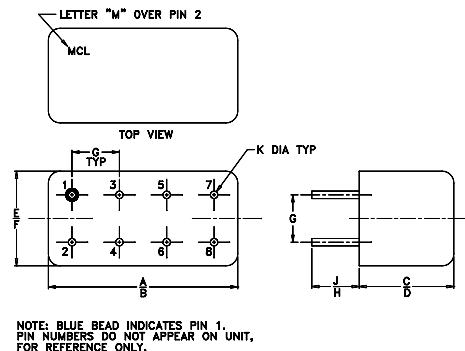
FREQUENCY (MHz)		CONVERSION LOSS (dB)				LO-RF ISOLATION (dB)						LO-IF ISOLATION (dB)					
LO/RF f_L - f_U	IF	Mid-Band m		Total Range Max.		L		M		U		L		M		U	
		\bar{X}	σ	Max.	Max.	Typ.	Min.	Typ.	Min.	Typ.	Min.	Typ.	Min.	Typ.	Min.	Typ.	Min.
0.5-500	DC-500	5.65	.04	7.0	8.5	50	45	45	30	35	25	45	35	40	25	30	20

1 dB COMP.: +9 dBm typ.

L = low range [f_L to $10 f_L$]
m = mid band [$2 f_L$ to $f_U/2$]

M = mid range [$10 f_L$ to $f_U/2$] U = upper range [$f_U/2$ to f_U]

Outline Drawing



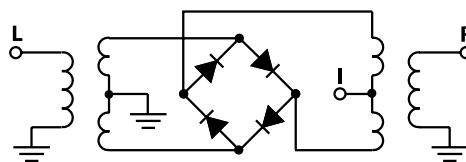
Outline Dimensions (inch/mm)

A	B	C	D	E	F
.770	.800	.385	.400	.370	.400
19.56	20.32	9.78	10.16	9.40	10.16
G	H	J	K	wt	
.200	.20	.14	.031		grams
5.08	5.08	3.56	0.79		5.2

Typical Performance Data

Frequency (MHz)		Conversion Loss (dB)	Isolation L-R (dB)	Isolation L-I (dB)	VSWR RF Port (:1)	VSWR LO Port (:1)
RF	LO	LO +13dBm	LO +13dBm	LO +13dBm	LO +13dBm	LO +13dBm
1.00	31.00	7.26	66.63	59.30	1.29	1.95
2.00	32.00	6.48	65.04	58.69	1.13	1.91
5.00	35.00	5.80	64.44	58.27	1.07	1.85
10.00	40.00	5.74	61.13	53.40	1.07	1.98
20.00	50.00	5.69	58.51	50.54	1.07	1.94
50.00	80.00	5.58	56.72	48.94	1.08	1.82
78.97	48.97	5.62	55.44	47.33	1.08	1.80
100.00	70.00	5.44	53.92	46.33	1.09	1.79
125.75	95.75	5.44	53.09	46.06	1.09	1.83
141.35	111.35	5.41	52.16	45.59	1.10	1.85
172.53	142.53	5.46	48.96	44.44	1.11	1.88
200.00	170.00	5.64	47.22	43.17	1.11	1.87
250.50	220.50	5.55	44.34	41.70	1.15	1.96
297.29	267.29	5.63	44.71	40.68	1.18	2.04
344.07	314.07	5.80	41.06	38.65	1.23	2.06
390.85	360.85	5.89	41.01	37.04	1.32	2.08
422.04	392.04	6.29	39.17	36.14	1.37	2.11
453.23	423.23	6.32	38.02	34.90	1.42	2.22
484.41	454.41	6.27	37.70	34.14	1.45	2.34
500.00	470.00	6.32	38.19	35.22	1.49	2.45

Electrical Schematic



Performance Charts

SRA-1MH+

