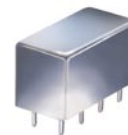


Plug-In Frequency Mixer

Level 10 (LO Power +10 dBm) 0.05 to 2000 MHz

SRA-220+



CASE STYLE: A01
PRICE: \$36.20 ea. QTY (1-9)

Maximum Ratings

Operating Temperature	-55°C to 100°C
Storage Temperature	-55°C to 100°C
RF Power	50mW
IF Current	40mA

Pin Connections

LO	8
RF	1
IF	3
GROUND	2,5,6,7
CASE GROUND	2,5,6,7
NOT USED	4

Features

- wideband, 0.05 to 2000 MHz
- low conversion loss, 5.59 dB typ.
- high L-R isolation, L-I isolation, 40 dB typ.
- hermetic, metal case

Applications

- GPS
- cellular
- defense & aeronautical systems
- military, hi-rel applications

**+ RoHS compliant in accordance
with EU Directive (2002/95/EC)**

The +Suffix has been added in order to identify RoHS Compliance. See our web site for RoHS Compliance methodologies and qualifications.

Electrical Specifications

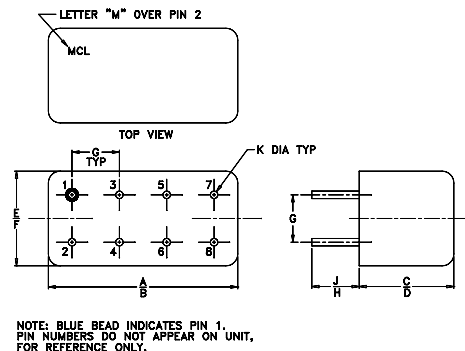
FREQUENCY (MHz)		CONVERSION LOSS (dB)				LO-RF ISOLATION (dB)						LO-IF ISOLATION (dB)					
LO/RF	IF	Mid-Band		Total Range		L		M		U		L		M		U	
f_L - f_U		\bar{X}	σ	Max.	Max.	Typ.	Min.	Typ.	Min.	Typ.	Min.	Typ.	Min.	Typ.	Min.	Typ.	Min.
0.5-2000	.05-500	5.59	.11	8.0	9.0	25	20	40	30	30	20	25	20	40	30	25	15

1 dB COMP.: +5 dBm typ.

L = low range [f_L to $10 f_L$]
m = mid band [$2 f_L$ to $f_U/2$]

M = mid range [$10 f_L$ to $f_U/2$]
U = upper range [$f_U/2$ to f_U]

Outline Drawing



Outline Dimensions (inch/mm)

A	B	C	D	E	F
.770	.800	.385	.400	.370	.400
19.56	20.32	9.78	10.16	9.40	10.16
G	H	J	K		
.200	.20	.14	.031		
5.08	5.08	3.56	0.79		
				wt	grams
					5.2

Typical Performance Data

Frequency (MHz)		Conversion Loss (dB)	Isolation L-R (dB)	Isolation L-I (dB)	VSWR RF Port (:1)	VSWR LO Port (:1)
RF	LO	LO +10dBm	LO +10dBm	LO +10dBm	LO +10dBm	LO +10dBm
0.05	30.05	6.31	20.56	20.32	1.42	1.38
1.00	31.00	5.23	37.02	35.22	1.42	1.38
5.00	35.00	5.34	41.42	40.80	1.44	1.34
20.00	50.00	5.57	42.73	42.42	1.45	1.41
50.00	80.00	5.59	42.75	42.09	1.44	1.37
100.00	70.00	5.50	42.49	40.87	1.49	1.34
153.89	123.89	5.49	42.03	38.92	1.63	1.30
230.81	200.81	5.78	41.75	36.48	2.03	1.24
307.73	277.73	5.75	41.49	34.62	2.73	1.22
500.00	470.00	5.97	38.13	32.70	3.06	1.24
615.42	585.42	6.37	40.61	34.50	3.23	1.30
692.34	662.34	6.90	42.63	35.22	3.35	1.25
846.18	816.12	7.39	40.51	34.89	2.98	1.34
1076.90	1047.20	7.31	36.30	27.82	2.40	1.38
1230.80	1200.80	6.91	32.05	23.22	1.60	1.36
1307.70	1277.80	6.81	30.96	21.56	1.20	1.31
1461.50	1431.70	7.49	24.40	19.73	1.04	1.35
1615.40	1585.50	7.29	34.31	19.71	1.19	1.37
1769.20	1739.20	7.80	38.84	18.84	1.31	1.43
2000.00	1970.30	8.89	31.97	19.56	1.41	1.56

Electrical Schematic

