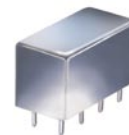


# Plug-In Frequency Mixer

## SRA-2H+

Level 17 (LO Power +17 dBm) 2 to 1000 MHz



### Maximum Ratings

Operating Temperature	-55°C to 100°C
Storage Temperature	-55°C to 100°C
RF Power	200mW
IF Current	40mA

### Pin Connections

LO	8
RF	1
IF	3,4 <sup>^</sup>
GROUND	2,5,6,7
CASE GROUND	2,5,6,7

<sup>^</sup> pins must be connected together externally

### Features

- excellent conversion loss, 6.34 dB typ.
- good L-R isolation, 35 dB typ. L-I isolation, 30 dB typ.
- rugged welded construction
- hermetic

### Applications

- cellular
- VHF/UHF
- ISM/GSM
- defense & federal communications

CASE STYLE: A01  
PRICE: \$43.20 ea. QTY (1-9)

**+ RoHS compliant in accordance with EU Directive (2002/95/EC)**

The +Suffix has been added in order to identify RoHS Compliance. See our web site for RoHS Compliance methodologies and qualifications.

### Electrical Specifications

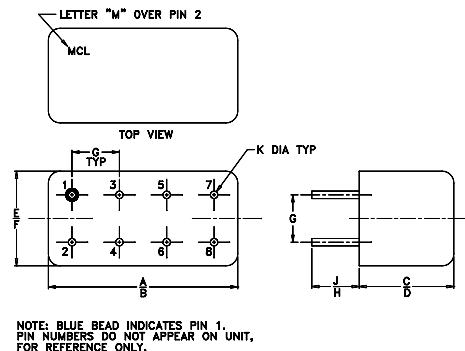
FREQUENCY (MHz)		CONVERSION LOSS (dB)				LO-RF ISOLATION (dB)						LO-IF ISOLATION (dB)					
LO/RF	IF	Mid-Band		Total Range		L		M		U		L		M		U	
$f_L$ - $f_U$		$\bar{X}$	$\sigma$	Max.	Max.	Typ.	Min.	Typ.	Min.	Typ.	Min.	Typ.	Min.	Typ.	Min.	Typ.	Min.
2-1000	DC-1000	6.34	.14	7.5	10.0	50	40	35	25	35	25	45	30	30	20	25	20

1 dB COMP.: +10 dBm typ.

L = low range [ $f_L$  to  $10 f_L$ ]  
m = mid band [ $2 f_L$  to  $f_U/2$ ]

M = mid range [ $10 f_L$  to  $f_U/2$ ] U = upper range [ $f_U/2$  to  $f_U$ ]

### Outline Drawing



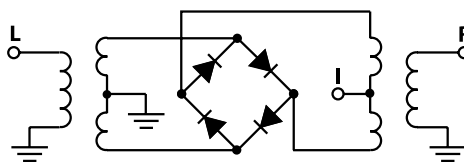
### Outline Dimensions (inch/mm)

A	B	C	D	E	F
.770	.800	.385	.400	.370	.400
19.56	20.32	9.78	10.16	9.40	10.16
G	H	J	K	wt	
.200	.20	.14	.031	grams	
5.08	5.08	3.56	0.79	5.2	

### Typical Performance Data

Frequency (MHz)		Conversion Loss (dB)	Isolation L-R (dB)	Isolation L-I (dB)	VSWR RF Port (:1)	VSWR LO Port (:1)
RF	LO	LO +17dBm	LO +17dBm	LO +17dBm	LO +17dBm	LO +17dBm
2.00	32.00	6.71	49.37	47.92	1.29	2.33
34.19	64.19	6.17	46.77	45.60	1.02	2.11
66.39	96.39	6.25	45.81	44.10	1.01	2.15
130.78	100.78	6.14	44.80	41.52	1.01	2.04
195.16	165.16	6.30	43.07	39.47	1.02	2.05
227.36	197.36	6.32	41.46	37.60	1.04	1.99
291.75	261.75	6.23	39.76	35.26	1.05	1.99
356.13	326.13	6.42	38.97	33.32	1.07	1.98
420.52	390.52	6.62	37.70	31.07	1.08	2.04
484.91	454.91	6.65	37.81	29.46	1.09	2.01
517.10	487.10	6.59	37.82	29.13	1.12	2.01
549.30	519.30	6.96	38.18	30.50	1.15	2.02
645.88	615.88	7.10	37.13	29.06	1.30	1.97
678.07	648.07	7.02	33.22	26.56	1.38	1.93
742.46	712.46	6.87	32.76	24.80	1.62	1.92
806.85	776.85	7.04	31.78	23.82	2.00	1.96
871.24	841.24	8.09	32.53	23.46	2.47	1.97
935.63	905.63	8.66	33.52	23.26	3.33	1.98
967.82	937.82	8.70	34.06	22.82	3.56	2.02
1000.00	970.00	8.81	33.66	22.59	3.82	2.11

### Electrical Schematic



# Performance Charts

## SRA-2H+

