

# Frequency Mixer

Level 10 (LO Power +10 dBm) 10 to 2000 MHz

## TFM-150+



CASE STYLE: B13

PRICE: \$49.70 ea. QTY (1-9)

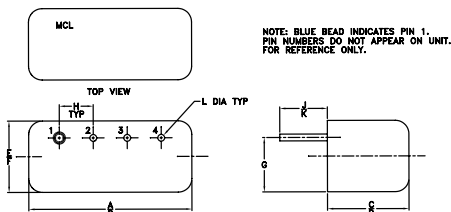
### Maximum Ratings

Operating Temperature	-55°C to 100°C
Storage Temperature	-55°C to 100°C
RF Power	50mW
IF Current	40mA

### Pin Connections

LO	1
RF	4
IF	2
GROUND	3
CASE GROUND	3

### Outline Drawing



### Outline Dimensions (inch/mm)

A	B	C	D	E	F
.480	.500	.390	.405	.210	.230
12.19	12.70	9.91	10.29	5.33	5.84
G	H	J	K	L	wt
.16	.100	.14	.20	.020	grams
4.06	2.54	3.56	5.08	0.51	2.3

### Features

- low conversion loss, 6.19 dB typ.
- wideband, 10 to 2000 MHz
- rugged welded construction
- hermetically sealed

### Applications

- satellite distribution
- cellular
- GPS
- ISM/GSM

**+ RoHS compliant in accordance with EU Directive (2002/95/EC)**

The +Suffix has been added in order to identify RoHS Compliance. See our web site for RoHS Compliance methodologies and qualifications.

### Electrical Specifications

FREQUENCY (MHz)		CONVERSION LOSS (dB)				LO-RF ISOLATION (dB)						LO-IF ISOLATION (dB)					
LO/RF	IF	Mid-Band m		Total Range Max.		L	M	U				L	M	U			
$f_L$ - $f_U$		$\bar{X}$	$\sigma$	Max.	8.0*	Typ.	Min.	Typ.	Min.	Typ.	Min.	Typ.	Min.	Typ.	Min.	Typ.	Min.
10-2000	DC-1000*	6.19	0.11	8.0	8.0*	32	25	35	25	35	25	33	20	30	20	30	20

1 dB COMP.: +5 dBm typ.

\* Below 10 MHz IF, conversion loss increases up to 6 dB higher as frequency decreases to DC

L = low range [ $f_L$  to  $10 f_L$ ]

m = mid band [ $2f_L$  to  $f_U/2$ ]

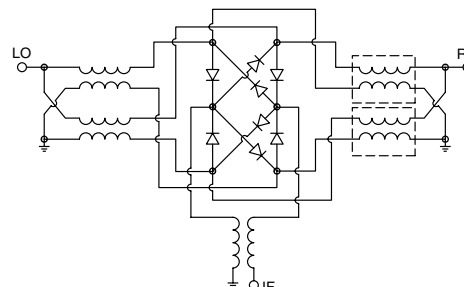
M = mid range [ $10 f_L$  to  $f_U/2$ ]

U = upper range [ $f_U/2$  to  $f_U$ ]

### Typical Performance Data

Frequency (MHz)		Conversion Loss (dB)	Isolation L-R (dB)	Isolation L-I (dB)	VSWR RF Port (:1)	VSWR LO Port (:1)
RF	LO	LO +10dBm	LO +10dBm	LO +10dBm	LO +10dBm	LO +10dBm
10.00	40.00	6.45	25.80	24.40	1.62	1.69
20.00	50.00	6.61	30.46	29.11	1.29	1.49
130.61	100.61	6.30	36.94	35.84	1.29	1.39
251.21	221.21	6.42	37.51	37.82	1.34	1.36
432.12	402.12	6.38	36.22	37.58	1.38	1.34
500.00	470.00	6.61	35.79	36.42	1.49	1.30
552.73	522.73	6.47	35.50	35.14	1.60	1.29
673.33	643.33	6.53	34.67	33.34	1.62	1.28
793.94	763.68	6.64	34.16	31.81	1.70	1.26
914.55	884.43	6.67	32.34	30.81	1.79	1.26
974.85	944.91	6.11	31.59	30.10	1.89	1.22
1035.20	1005.40	7.04	30.74	29.56	2.02	1.20
1155.80	1125.60	7.24	30.26	30.08	2.07	1.20
1276.40	1246.50	6.75	29.72	30.93	2.13	1.18
1397.00	1366.80	6.57	28.85	31.94	2.13	1.13
1517.60	1487.50	6.59	28.61	31.80	2.05	1.07
1638.20	1608.00	6.63	27.94	29.65	1.88	1.12
1758.80	1728.70	6.91	28.39	26.17	1.45	1.18
1879.40	1849.50	7.01	30.98	26.61	1.43	1.21
2000.00	1970.00	7.24	32.51	24.79	1.55	1.26

### Electrical Schematic



# Performance Charts

## TFM-150+

