

# Frequency Mixer

Level 17 (LO Power +17 dBm) 0.1 to 250 MHz

## TFM-3H+



CASE STYLE: B02

PRICE: \$30.20 ea. QTY (1-9)

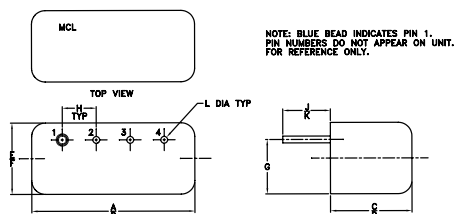
### Maximum Ratings

Operating Temperature	-55°C to 100°C
Storage Temperature	-55°C to 100°C
RF Power	200mW
IF Current	40mA

### Pin Connections

LO	4
RF	1
IF	2
GROUND	3
CASE GROUND	3

### Outline Drawing



### Outline Dimensions (inch/mm)

A	B	C	D	E	F
.480	.500	.240	.255	.210	.230
12.19	12.70	6.10	6.48	5.33	5.84
G	H	J	K	L	wt
.16	.100	.14	.20	.020	grams
4.06	2.54	3.56	5.08	0.51	1.9

### Features

- low conversion loss, 4.58 dB typ.
- good L-R isolation, 40 dB typ.
- rugged welded construction
- hermetically sealed

### Applications

- VHF
- aviation
- maritime, defense & federal communications

**+ RoHS compliant in accordance with EU Directive (2002/95/EC)**

The +Suffix has been added in order to identify RoHS Compliance. See our web site for RoHS Compliance methodologies and qualifications.

### Electrical Specifications

FREQUENCY (MHz)		CONVERSION LOSS (dB)				LO-RF ISOLATION (dB)						LO-IF ISOLATION (dB)					
LO/RF	IF	Mid-Band m				L	M	U							L	M	U
$f_L-f_U$		$\bar{X}$	$\sigma$	Max.	Total Range Max.	Typ.	Min.	Typ.	Min.	Typ.	Min.	Typ.	Min.	Typ.	Min.	Typ.	Min.
0.1-250	DC-250	4.58	0.11	7.0	8.5	50	45	40	30	28	23	45	40	35	25	26	20

1 dB COMP.: +14 dBm typ.

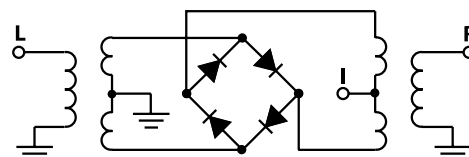
L = low range [ $f_L$  to  $10 f_L$ ]  
m = mid band [ $2f_L$  to  $f_U/2$ ]

M = mid range [ $10 f_L$  to  $f_U/2$ ]  
U = upper range [ $f_U/2$  to  $f_U$ ]

### Typical Performance Data

Frequency (MHz)		Conversion Loss (dB)	Isolation L-R (dB)	Isolation L-I (dB)	VSWR RF Port (:1)	VSWR LO Port (:1)
RF	LO	LO +17dBm	LO +17dBm	LO +17dBm	LO +17dBm	LO +17dBm
0.10	30.10	5.43	66.42	66.28	1.40	1.51
5.00	35.00	4.99	61.64	64.07	1.40	1.46
10.00	40.00	4.91	60.33	61.62	1.38	1.52
20.00	50.00	4.94	61.22	60.51	1.39	1.51
34.57	64.57	4.92	57.23	56.07	1.39	1.52
50.00	80.00	4.92	53.98	52.73	1.39	1.48
60.42	90.42	4.92	52.33	50.92	1.38	1.45
69.04	99.04	4.87	51.05	49.22	1.38	1.47
86.27	56.27	4.80	48.52	46.16	1.35	1.43
100.00	70.00	4.79	46.72	44.44	1.35	1.41
103.51	73.51	4.84	46.41	44.07	1.33	1.44
129.36	99.36	4.89	43.29	41.27	1.31	1.45
146.59	116.59	4.91	41.82	40.17	1.30	1.50
155.21	125.21	4.90	41.17	39.68	1.29	1.46
172.44	142.44	5.00	39.95	38.86	1.24	1.46
189.68	159.68	5.08	39.60	38.24	1.22	1.45
224.15	194.15	5.21	37.56	36.93	1.21	1.47
232.76	202.76	5.26	36.71	36.82	1.18	1.52
241.38	211.38	5.24	35.87	36.43	1.16	1.53
250.00	220.00	5.23	35.46	36.00	1.14	1.52

### Electrical Schematic



# Performance Charts

## TFM-3H+

