

Coaxial

High Power Combiner

ZA2CS-10-20W

2 Way-0° 50Ω

900 to 1000 MHz

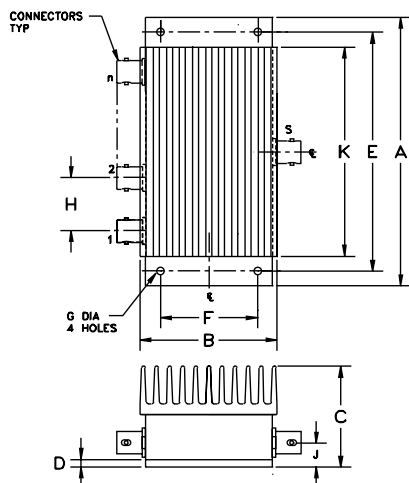
Maximum Ratings

Operating Temperature	-55°C to 90°C
Storage Temperature	-55°C to 100°C

Coaxial Connections

SUMPORT	S
PORT 1	1
PORT 2	2

Outline Drawing



Outline Dimensions (inch mm)

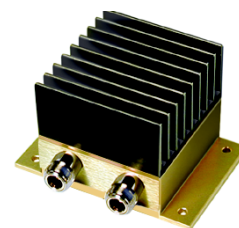
A	B	C	D	E	F
3.00	2.06	1.90	.100	2.500	1.525
76.20	52.32	48.26	2.54	63.50	38.74
G	H	J	K	wt	
.125	1.000	.50	2.00	grams	
3.18	25.40	12.70	50.80	280	

Features

- high power, up to 20W input power
- low insertion loss, 0.2 dB typ.
- high isolation, 38 dB typ.
- excellent VSWR, 1.1:1 typ.

Applications

- cellular
- instrumentation
- communication transmitters & receivers



CASE STYLE: AW254

Connectors	Model	Price	Qty.
N-TYPE	ZA2CS-10-20W-N	\$89.95	(1-9)

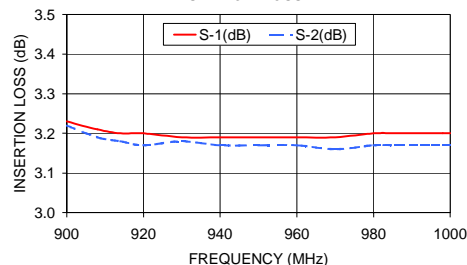
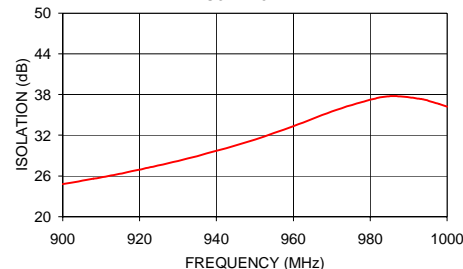
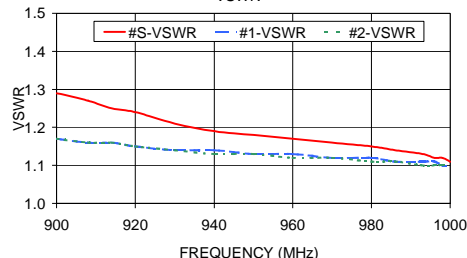
High Power Combiner Electrical Specifications

FREQ. RANGE (MHz)	ISOLATION (dB)	INSERTION LOSS (dB) ABOVE 3.0 dB	PHASE UNBALANCE (Degrees)	AMPLITUDE UNBALANCE (dB)	POWER INPUT ¹ (W)
f_L - f_U	Typ. Min.	Typ. Max.	Typ. Max.	Typ. Max.	as combiner ² Max. as splitter Max.
900-1000	38 20	0.2 0.5	0.5 3.0	0.11 0.3	20 20

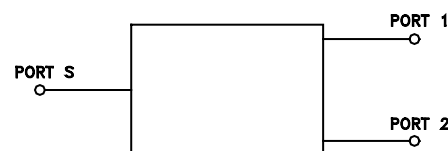
1. Over -55°C to +55°C. Derate linearly to 20% of rating at 90°C
2. As a combiner of non-coherent signals, max. power per port is power rating divided by number of ports.

Typical Performance Data

Frequency (MHz)	Insertion Loss (dB) S-1	Insertion Loss (dB) S-2	Amplitude Unbalance (dB)	Isolation (dB)	Phase Unbalance (deg.)	VSWR S	VSWR 1	VSWR 2
900.00	3.23	3.22	0.01	24.81	0.25	1.29	1.17	1.17
908.00	3.21	3.19	0.02	25.59	0.27	1.27	1.16	1.16
914.00	3.20	3.18	0.02	26.22	0.27	1.25	1.16	1.16
920.00	3.20	3.17	0.02	26.94	0.26	1.24	1.15	1.15
930.00	3.19	3.18	0.02	28.21	0.27	1.21	1.14	1.14
940.00	3.19	3.17	0.02	29.70	0.23	1.19	1.14	1.13
950.00	3.19	3.17	0.02	31.38	0.29	1.18	1.13	1.13
960.00	3.19	3.17	0.02	33.33	0.28	1.17	1.13	1.12
970.00	3.19	3.16	0.03	35.50	0.24	1.16	1.12	1.12
980.00	3.20	3.17	0.03	37.24	0.25	1.15	1.12	1.11
986.00	3.20	3.17	0.03	37.77	0.23	1.14	1.11	1.11
993.00	3.20	3.17	0.03	37.35	0.27	1.13	1.11	1.10
996.00	3.20	3.17	0.03	36.92	0.25	1.12	1.11	1.10
998.00	3.20	3.17	0.03	36.59	0.23	1.12	1.10	1.10
1000.00	3.20	3.17	0.03	36.22	0.25	1.11	1.10	1.10

ZA2CS-10-20W
INSERTION LOSSZA2CS-10-20W
ISOLATIONZA2CS-10-20W
VSWR

electrical schematic



INTERNET <http://www.minicircuits.com>

P.O. Box 350166, Brooklyn, New York 11235-0003 (718) 934-4500 Fax (718) 332-4661

Distribution Centers NORTH AMERICA 800-654-7949 • 417-335-5935 • Fax 417-335-5945 • EUROPE 44-1252-832600 • Fax 44-1252-837010

Mini-Circuits ISO 9001 & ISO 14001 Certified

 REV. OR
 M94385
 ED-6067/1
 ZA2CS-10-20W
 HY/TDCP
 051005