

Coaxial Frequency Mixer

Level 7 (LO Power +7 dBm) 0.003 to 100 MHz

ZAD-6+
ZAD-6



CASE STYLE: M22

Maximum Ratings

Operating Temperature	-55°C to 100°C
Storage Temperature	-55°C to 100°C
RF Power	50mW
IF Current	40mA

Coaxial Connections

LO	1
RF	3
IF	2

Features

- low conversion loss, 4.65 dB typ.
- good L-R isolation, 45 dB typ.,
L-I isolation, 40 dB typ.
- rugged shielded case

Applications

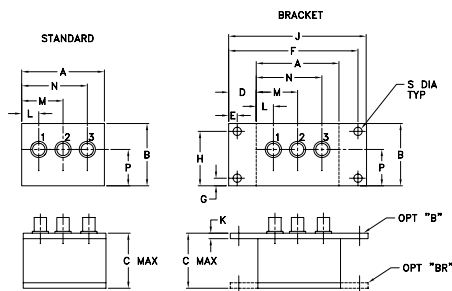
- VHF
- AM radio
- instrumentation

Connectors	Model	Price	Qty.
BNC	ZAD-6(+)	\$51.95 ea.	(1-9)
BRACKET (OPTION "B")		\$5.00	(1+)
BRACKET (OPTION "BR")		\$1.50	(1+)

+ RoHS compliant in accordance with EU Directive (2002/95/EC)

The +Suffix identifies RoHS Compliance. See our web site for RoHS Compliance methodologies and qualifications.

Outline Drawing



Outline Dimensions (inch)

A	B	C	D	E	F	G	H
2.25	1.38	1.24	.50	.150	3.100	.138	1.238
57.15	35.05	31.50	12.70	3.81	78.74	3.51	31.45

J	K	L	M	N	P	S	wt
3.25	.10	.40	1.15	1.86	.64	.150	grams
82.55	2.54	10.16	29.21	47.24	16.26	3.81	74.0

Electrical Specifications

FREQUENCY (MHz)	CONVERSION LOSS (dB)	LO-RF ISOLATION (dB)						LO-IF ISOLATION (dB)					
		L		M		U		L		M		U	
		Typ.	Min.	Typ.	Min.	Typ.	Min.	Typ.	Min.	Typ.	Min.	Typ.	Min.
0.003-100	DC-100	4.65	0.08	7.5	8.5	60	50	45	30	35	25	60	45

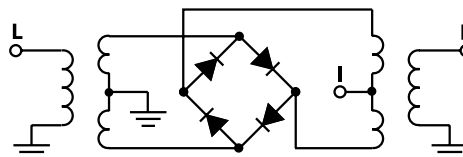
1 dB COMP.: +1 dBm typ.

L = low range [f_L to $10 f_L$] M = mid range [$10 f_L$ to $f_U/2$] U = upper range [$f_U/2$ to f_U]
m = mid band [$2f_L$ to $f_U/2$]

Typical Performance Data

Frequency (MHz)		Conversion Loss (dB)	Isolation L-R (dB)	Isolation L-I (dB)	VSWR RF Port (:1)	VSWR LO Port (:1)
RF	LO	LO +7dBm	LO +7dBm	LO +7dBm	LO +7dBm	LO +7dBm
0.003	30.003	6.08	61.88	63.93	1.25	2.77
0.100	30.100	5.90	62.42	63.98	1.25	2.73
0.200	30.200	5.92	62.44	64.17	1.25	2.68
0.500	30.500	5.87	62.74	64.06	1.25	2.59
0.800	30.800	5.87	62.70	64.22	1.24	2.60
1.000	31.000	5.82	62.48	64.07	1.23	2.58
2.000	32.000	5.85	62.34	63.72	1.21	2.63
5.000	35.000	5.93	61.61	63.44	1.18	2.61
10.000	40.000	5.96	56.55	56.72	1.15	2.55
20.000	50.000	6.13	49.50	49.60	1.13	2.55
22.230	52.230	6.08	48.53	48.53	1.10	2.56
29.630	59.630	6.15	44.72	43.96	1.08	2.56
37.040	7.040	6.11	42.63	43.10	1.07	2.56
44.450	14.450	6.17	41.27	41.40	1.06	2.56
50.000	20.000	6.25	39.99	40.43	1.08	2.55
62.960	32.960	6.42	35.83	37.97	1.10	2.53
70.370	40.370	6.51	34.72	35.50	1.13	2.57
77.780	47.780	6.81	34.07	32.41	1.15	2.71
85.190	55.190	7.08	33.63	31.31	1.15	2.79
92.590	62.590	7.13	34.08	31.97	1.14	2.86

Electrical Schematic



Performance Charts

ZAD-6+
ZAD-6

