

Coaxial Directional Coupler

50Ω

800 to 1000 MHz

ZADC-20-10



SMA version shown
CASE STYLE: CC51-1

Maximum Ratings

Operating Temperature	-55°C to 100°C
Storage Temperature	-55°C to 100°C

Coaxial Connections

INPUT	1
OUTPUT	3
COUPLED	2

Features

- low conversion loss, 0.4 dB typ.
- excellent VSWR, 1.18 typ.
- power input up to 5W

Applications

- GSM
- instrumentation
- cellular

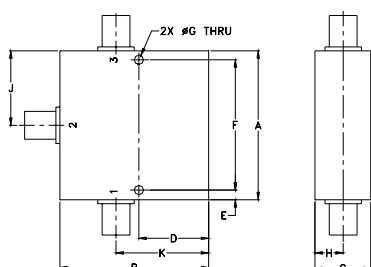
Connectors	Model	Price	Qty.
N-TYPE	ZADC-20-10-N	\$49.95 ea.	(1-9)
SMA	ZADC-20-10-S	\$49.95 ea.	(1-9)

Directional Coupler Electrical Specifications

FREQ. RANGE (MHz)	COUPLING (dB)		MAINLINE LOSS ¹		DIRECTIVITY (dB)		VSWR (:1)	POWER INPUT (W)
	Nom.	Flatness	Typ.	Max.	Typ.	Min.		
f _L -f _U								
800-1000	20.0±0.6	±1.2	0.4	0.7	21	17	1.18	5

1. Mainline loss includes theoretical power loss at coupled port.

Outline Drawing



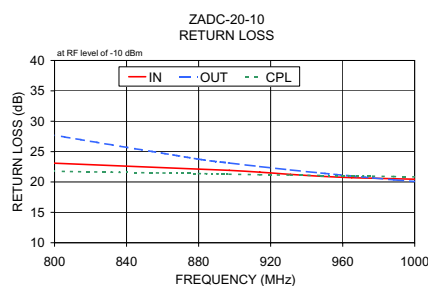
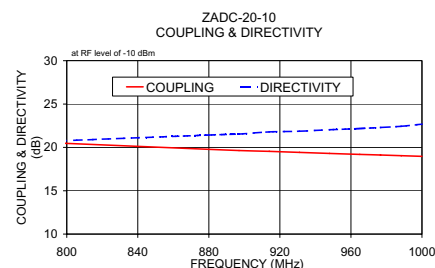
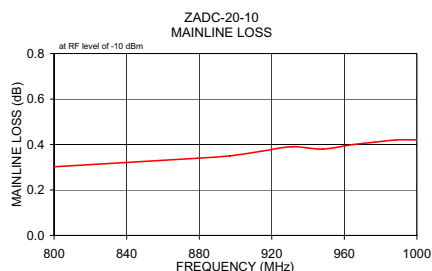
Outline Dimensions (inch/mm)

A	B	C	D	E	F
2.00	2.00	.75	.938	.13	1.750
50.80	50.80	19.05	23.83	3.30	44.45

G	H	J	K	wt
.125	.38	1.00	1.25	grams
3.18	9.65	25.40	31.75	145.0

Typical Performance Data

Frequency (MHz)	Mainline Loss (dB) In-Out	Coupling (dB) In-Cpl	Directivity (dB)	Return Loss (dB)		
				In	Out	Cpl
753.33	0.28	20.86	20.41	23.66	29.98	21.98
880.00	0.34	19.78	21.43	22.11	23.76	21.39
897.00	0.35	19.64	21.54	21.92	23.13	21.29
914.00	0.37	19.54	21.79	21.61	22.54	21.20
931.00	0.39	19.42	21.87	21.25	21.99	21.13
948.00	0.38	19.30	22.04	20.93	21.47	21.07
965.00	0.40	19.19	22.18	20.71	20.98	21.03
976.66	0.41	19.12	22.30	20.62	20.67	20.96
988.33	0.42	19.04	22.44	20.53	20.36	20.90
1000.00	0.42	18.97	22.69	20.46	20.08	20.84



electrical schematic

