

Coaxial

Power Splitter/Combiner

2 Way-0° 50Ω 1000 to 2000 MHz

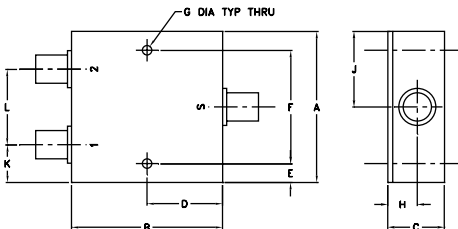
Maximum Ratings

Operating Temperature	-55°C to 100°C
Storage Temperature	-55°C to 100°C
Power Input (as a splitter)	10W max.
Internal Dissipation	0.125W max.

Coaxial Connections

SUMPORT	S
PORT 1	1
PORT 2	2

Outline Drawing



Outline Dimensions (Inch/mm)

A	B	C	D	E	F	G	
2.00	2.00	.75	1.00	.25	1.500	.125	
50.80	50.80	19.05	25.40	6.35	38.10	3.18	
H	J	K	L				wt
.39	1.00	.50	1.00				grams
9.91	25.40	12.70	25.40				170.0

Features

- low insertion loss, 0.25 dB typ.
- good isolation, 25 dB typ.
- up to 10W power input as splitter
- excellent amplitude unbalance, 0.1 dB typ.
- excellent phase unbalance, 0.5 deg. typ.
- excellent VSWR, 1.1:1 typ.
- rugged shielded case

Applications

- GPS
- satellite distribution
- PCS/DCS
- communications systems

ZAPD-2+ ZAPD-2



N-Type version shown

CASE STYLE: F14

Connectors	Model	Price	Qty.
BNC	ZAPD-2(+)	\$54.95	(1-9)
SMA	ZAPD-2-S(+)	\$59.95	(1-9)
N-TYPE	ZAPD-2-N(+)	\$59.95	(1-9)

+ RoHS compliant in accordance with EU Directive (2002/95/EC)

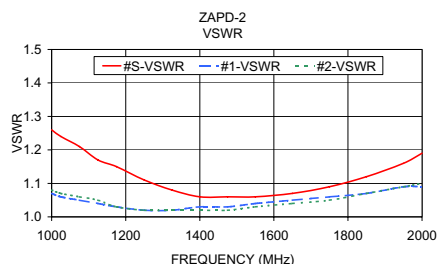
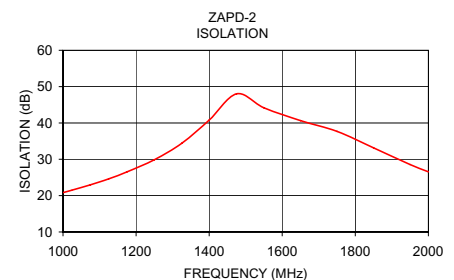
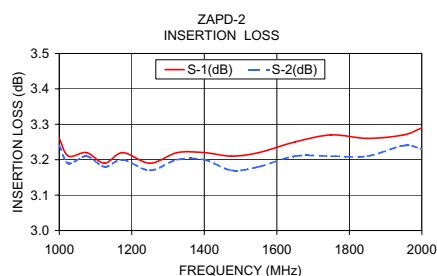
The +Suffix identifies RoHS Compliance. See our web site for RoHS Compliance methodologies and qualifications.

Splitter Electrical Specifications

FREQ. RANGE (MHz)	ISOLATION (dB)		INSERTION LOSS (dB) ABOVE 3.0 dB		PHASE UNBALANCE (Degrees)	AMPLITUDE UNBALANCE (dB)	VSWR (:1)			
f_L - f_U	Typ.	Min.	Typ.	Max.	Max.	Max.	S		OUT	
							Typ.	Max.	Typ.	Max.
1000-2000	25	19	0.25	0.6	2	0.2	—	—	—	—

Typical Performance Data

Frequency (MHz)	Insertion Loss (dB)		Amplitude Unbalance (dB)	Isolation (dB)	Phase Unbalance (deg.)	VSWR S	VSWR 1	VSWR 2
	S-1	S-2						
1000.00	3.26	3.24	0.02	20.82	0.14	1.26	1.07	1.08
1025.00	3.21	3.19	0.01	21.53	0.14	1.24	1.06	1.07
1075.00	3.22	3.21	0.01	22.97	0.12	1.21	1.05	1.06
1125.00	3.19	3.18	0.01	24.61	0.16	1.17	1.04	1.05
1175.00	3.22	3.20	0.02	26.54	0.13	1.15	1.03	1.03
1250.00	3.19	3.17	0.02	29.88	0.17	1.11	1.02	1.02
1325.00	3.22	3.20	0.02	34.41	0.15	1.08	1.02	1.02
1400.00	3.22	3.20	0.02	40.79	0.23	1.06	1.03	1.02
1475.00	3.21	3.17	0.04	48.01	0.27	1.06	1.03	1.02
1550.00	3.22	3.18	0.04	44.16	0.23	1.06	1.04	1.03
1650.00	3.25	3.21	0.04	40.64	0.23	1.07	1.05	1.04
1750.00	3.27	3.21	0.05	37.67	0.17	1.09	1.06	1.05
1850.00	3.26	3.21	0.05	33.14	0.22	1.12	1.07	1.07
1950.00	3.27	3.24	0.03	28.56	0.27	1.16	1.09	1.09
2000.00	3.29	3.23	0.06	26.55	0.20	1.19	1.09	1.10



electrical schematic



Mini-Circuits®

INTERNET <http://www.minicircuits.com>

P.O. Box 350166, Brooklyn, New York 11235-0003 (718) 934-4500 Fax (718) 332-4661

Distribution Centers NORTH AMERICA 800-654-7949 • 417-335-5935 • Fax 417-335-5945 • EUROPE 44-1252-832600 • Fax 44-1252-837010

Mini-Circuits ISO 9001 & ISO 14001 Certified

REV. A
M98898
ZAPD-2
HY/TD/CP
060828