

Coaxial

# Power Splitter/Combiner

6 Way-0° 50Ω

1700 to 1900 MHz

ZB6PD1-1900

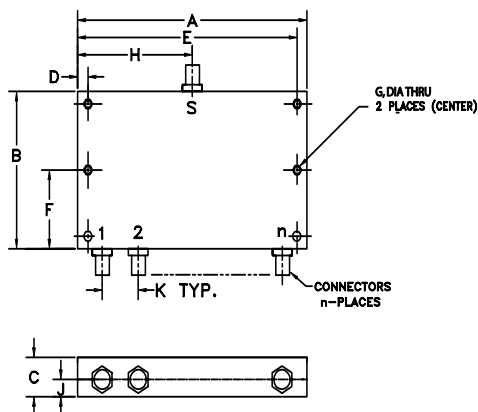
## Maximum Ratings

Operating Temperature	-55°C to 100°C
Storage Temperature	-55°C to 100°C
Power Input (as a splitter)	10W max.
Internal Dissipation	0.5W max.

## Coaxial Connections

SUMPORT	S
PORT 1	1
PORT 2	2
PORT 3	3
PORT 4	4
PORT 5	5
PORT 6	6

## Outline Drawing



## Outline Dimensions (inch)

A	B	C	D	E	F
6.0	1.62	.88	.250	5.750	.810
152.40	41.15	22.35	6.35	146.05	20.57

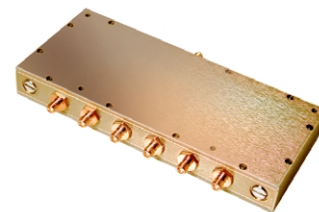
G	H	J	K	wt
.144	3.00	.44	1.00	grams
3.66	76.20	11.18	25.40	340

## Features

- low insertion loss, 0.4 dB typ.
- high isolation, 32 dB typ.
- excellent VSWR, 1.1:1 typ.
- shielded, rugged case
- up to 10W power input as splitter

## Applications

- PCS/DCS
- communication systems
- instrumentation



SMA version shown

CASE STYLE: UU187

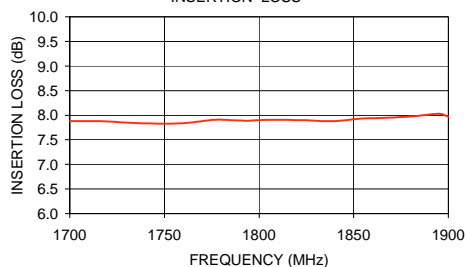
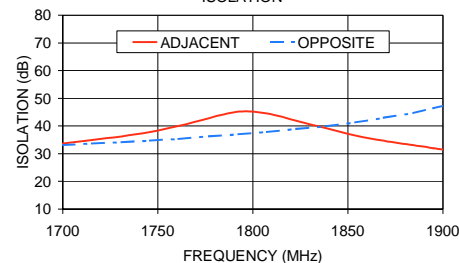
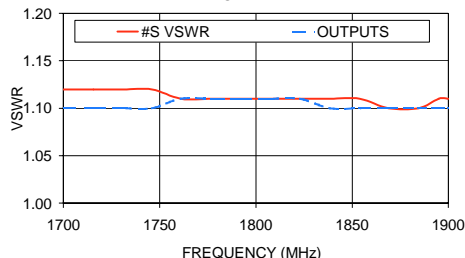
Connectors	Model	Price	Qty.
SMA	ZB6PD1-1900-S	\$149.95	(1-9)
N-TYPE	ZB6PD1-1900-N	\$149.95	(1-9)

## Splitter Electrical Specifications

FREQ. RANGE (MHz)	ISOLATION (dB)	INSERTION LOSS (dB) ABOVE 7.8 dB		AMPLITUDE UNBALANCE (dB)	VSWR (:1)			
		Typ.	Max.		S		OUT	
$f_L$ - $f_U$	Typ. Min.			Max.	Typ.	Max.	Typ.	Max.
1700-1900	32 20	0.4	0.8	0.6	1.1	1.3	1.09	1.4

## Typical Performance Data

Frequency (MHz)	Insertion Loss (dB)	Amplitude Unbalance (dB)	Isolation (dB)		VSWR S	VSWR OUTPUTS
			Adjacent	Opposite		
1700.00	7.88	0.21	33.71	33.10	1.12	1.10
1715.50	7.88	0.20	34.95	33.70	1.12	1.10
1731.00	7.85	0.20	36.27	34.13	1.12	1.10
1746.00	7.83	0.17	37.81	34.76	1.12	1.10
1761.00	7.84	0.20	40.02	35.34	1.11	1.11
1777.00	7.91	0.17	42.84	36.27	1.11	1.11
1792.50	7.89	0.13	45.17	36.97	1.11	1.11
1807.50	7.91	0.13	44.54	37.90	1.11	1.11
1823.00	7.90	0.17	41.92	38.94	1.11	1.11
1838.50	7.88	0.15	39.17	39.91	1.11	1.10
1854.00	7.93	0.13	36.55	41.27	1.11	1.10
1869.00	7.95	0.12	34.68	43.01	1.10	1.10
1884.50	7.99	0.13	33.06	44.69	1.10	1.10
1895.00	8.03	0.12	32.02	46.45	1.11	1.10
1900.00	7.97	0.13	31.53	47.29	1.11	1.10

ZB6PD1-1900  
INSERTION LOSSZB6PD1-1900  
ISOLATIONZB6PD1-1900  
VSWR

## electrical schematic

