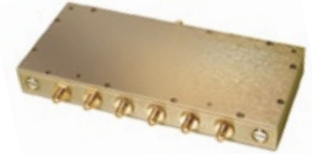


Coaxial

Power Splitter/Combiner

6 Way-0° 50Ω 1500 to 1700 MHz

ZB6PD-1700



Maximum Ratings

Operating Temperature	-55°C to 100°C
Storage Temperature	-55°C to 100°C
Power Input (as a splitter)	10W max.
Internal Dissipation	0.750W max.

Coaxial Connections

SUMPORT	S
PORT 1,2,3,4,5,6	1,2,3,4,5,6

Features

- high isolation, 30 dB typ.
- low insertion loss, 0.5 dB typ.
- rugged, shielded case
- up to 10W power input as splitter

Applications

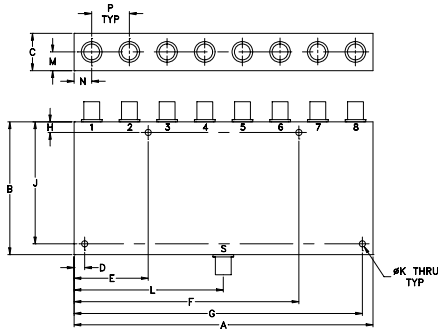
- UHF/GPS
- instrumentation
- signal processing

SMA version shown

CASE STYLE: Z41

Connectors	Model	Price	Qty.
SMA	ZB6PD-1700-S	\$149.95	(1-9)
N-Type	ZB6PD-1700-N	\$149.95	(1-9)

Outline Drawing



Outline Dimensions (inch/mm)

A	B	C	D	E	F	G	H
7.06	3.13	.88	.250	1.750	5.310	6.810	.250
179.32	79.50	22.35	6.35	44.45	134.87	172.97	6.35

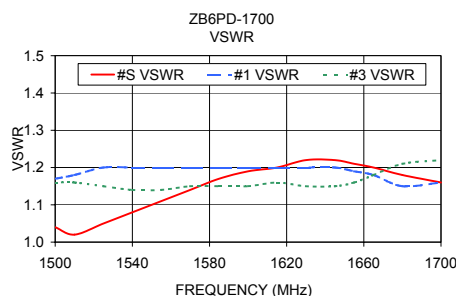
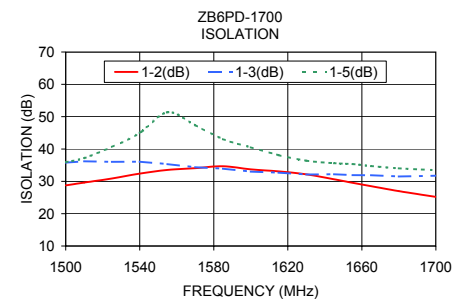
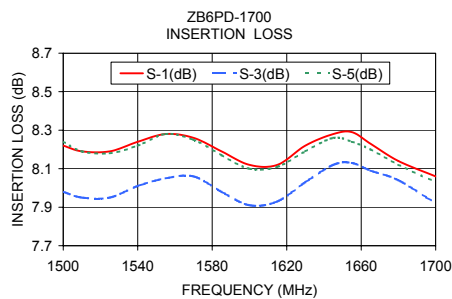
J	K	L	M	N	P	wt
2.875	.144	3.53	.44	.415	.89	grams
73.03	3.66	89.66	11.18	10.54	22.61	800

Splitter Electrical Specifications

FREQ. RANGE (MHz)	ISOLATION (dB)		INSERTION LOSS (dB) ABOVE 7.8 dB		AMPLITUDE UNBALANCE (dB)	VSWR (:1)			
	Typ.	Min.	Typ.	Max.		S		OUT	
f _L -f _U					Max.	Typ.	Max.	Typ.	Max.
1500-1700	30	20	0.5	1.0	0.6	1.15	1.5	1.3	1.5

Typical Performance Data

Frequency (MHz)	Insertion Loss (dB)			Amplitude Unbalance (dB)	Isolation (dB)			Phase Unbal. (deg.)	VSWR S	VSWR 1	VSWR 3
	S-1	S-2	S-3		1-2	1-3	1-5				
1500.00	8.22	7.98	8.24	0.26	28.76	35.78	35.94	106.97	1.04	1.17	1.16
1510.00	8.19	7.95	8.19	0.26	29.63	36.21	37.19	107.57	1.02	1.18	1.16
1525.00	8.19	7.95	8.18	0.25	30.88	36.03	40.62	108.71	1.05	1.20	1.15
1540.00	8.24	8.01	8.22	0.24	32.39	36.09	44.99	109.66	1.08	1.20	1.14
1555.00	8.28	8.05	8.28	0.23	33.52	35.34	51.38	110.72	1.11	1.20	1.14
1570.00	8.26	8.06	8.25	0.22	34.08	34.37	47.35	111.85	1.14	1.20	1.15
1585.00	8.19	7.98	8.17	0.22	34.67	33.92	43.05	112.86	1.17	1.20	1.15
1600.00	8.12	7.91	8.10	0.23	33.71	33.02	40.54	113.87	1.19	1.20	1.15
1615.00	8.12	7.93	8.11	0.22	33.08	32.68	38.10	114.96	1.20	1.20	1.16
1630.00	8.22	8.03	8.19	0.21	32.16	32.12	36.38	116.08	1.22	1.20	1.15
1645.00	8.28	8.12	8.26	0.18	30.63	32.20	35.61	117.10	1.22	1.20	1.15
1655.00	8.29	8.13	8.24	0.17	29.55	31.91	35.33	117.91	1.21	1.19	1.16
1665.00	8.23	8.09	8.20	0.17	28.51	31.89	34.71	118.58	1.20	1.18	1.18
1680.00	8.14	8.04	8.12	0.15	26.98	31.49	34.03	119.99	1.18	1.15	1.21
1700.00	8.06	7.92	8.03	0.15	25.19	31.74	33.45	121.58	1.16	1.16	1.22



electrical schematic



Mini-Circuits®

Distribution Centers NORTH AMERICA 800-654-7949 • 417-335-5935 • Fax 417-335-5945 • EUROPE 44-1252-832600 • Fax 44-1252-837010

Mini-Circuits ISO 9001 & ISO 14001 Certified

INTERNET <http://www.minicircuits.com>

P.O. Box 350166, Brooklyn, New York 11235-0003 (718) 934-4500 Fax (718) 332-4661

REV. OR
M96283
ZB6PD-1700
HY/TD/CP/AM
060913