

Coaxial

Power Splitter/Combiner

10 Way-0° 50Ω

2300 to 2600 MHz

ZC10PD-26

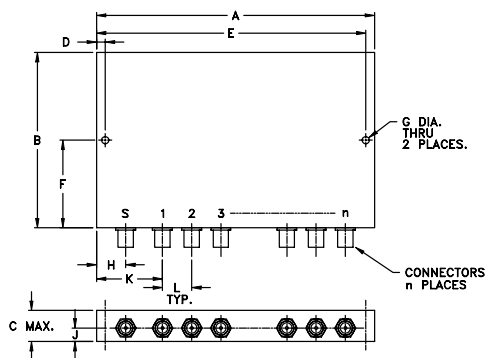
Maximum Ratings

Operating Temperature	-55°C to 100°C
Storage Temperature	-55°C to 100°C
Power Input (as a splitter)	10W max.
Internal Dissipation	0.80W max.

Coaxial Connections

SUM PORT	S
PORT 1,2,3,4,5,6,7,8,9,10	1,2,3,4,5,6,7,8,9,10

Outline Drawing



Outline Dimensions (inch/mm)

A	B	C	D	E	F
6.13	3.00	.53	.162	5.962	1.500
155.70	76.20	13.46	4.11	151.43	38.10
G	H	J	K	L	wt
.116	.50	.25	1.13	.500	grams
2.95	12.70	6.35	28.70	12.70	215

Features

- low insertion loss, 0.7 dB typ.
- high isolation, 35 dB typ.
- good amplitude unbalance, 0.45 dB typ.
- good VSWR, 1.25 typ.
- up to 10W power input as splitter

Applications

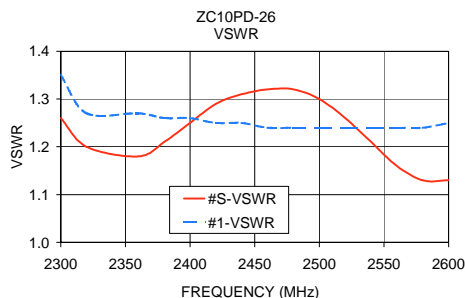
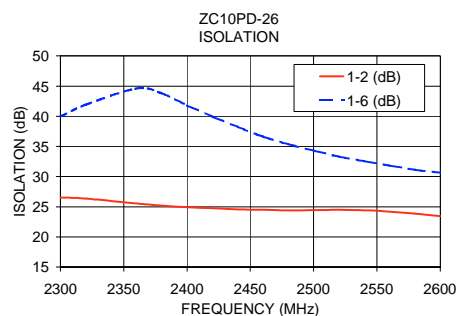
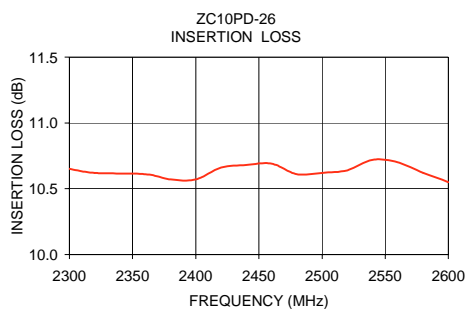
- cellular communications
- CATV
- ISM
- wireless communication systems

Electrical Specifications

FREQ. RANGE (MHz)	ISOLATION (dB)	INSERTION LOSS (dB) ABOVE 10 dB	PHASE UNBALANCE (Degrees)	AMPLITUDE UNBALANCE (dB)	VSWR (:1)
$f_L - f_U$	Typ. Min.	Typ. Max.	Max.	Max.	S Typ. Max. OUT Typ. Max.
2300-2600	35 20	0.7 1.9	15	1.1	1.3 1.7 1.2 1.6

Typical Performance Data

Frequency (MHz)	Insertion Loss (dB)	Amplitude Unbalance (dB)	Isolation (dB) 1-2 1-6	Phase Unbalance (deg.)	VSWR S	VSWR 1
2300.00	10.65	0.22	26.54 39.97	8.93	1.26	1.35
2320.00	10.62	0.24	26.34 41.93	8.96	1.20	1.27
2360.00	10.61	0.19	25.54 44.60	9.14	1.18	1.27
2380.00	10.57	0.16	25.18 43.79	9.32	1.21	1.26
2400.00	10.57	0.17	24.92 41.81	9.47	1.25	1.26
2420.00	10.66	0.16	24.75 39.95	9.76	1.29	1.25
2440.00	10.68	0.17	24.56 38.23	9.53	1.31	1.25
2460.00	10.69	0.16	24.47 36.62	9.69	1.32	1.24
2480.00	10.61	0.18	24.40 35.37	10.19	1.32	1.24
2500.00	10.62	0.23	24.44 34.29	10.55	1.30	1.24
2520.00	10.64	0.22	24.47 33.31	10.53	1.26	1.24
2540.00	10.72	0.17	24.41 32.56	10.52	1.21	1.24
2560.00	10.70	0.13	24.19 31.81	10.89	1.16	1.24
2580.00	10.62	0.18	23.86 31.13	11.56	1.13	1.24
2600.00	10.55	0.32	23.41 30.66	11.82	1.13	1.25



electrical schematic



INTERNET <http://www.minicircuits.com>

P.O. Box 350166, Brooklyn, New York 11235-0003 (718) 934-4500 Fax (718) 332-4661

Distribution Centers NORTH AMERICA 800-654-7949 • 417-335-5935 • Fax 417-335-5945 • EUROPE 44-1252-832600 • Fax 44-1252-837010

Mini-Circuits ISO 9001 & ISO 14001 Certified

REV. OR
M95083
ZC10PD-26
HY/TD/CP
060601