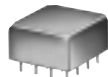


POWER SPLITTERS/COMBINERS 50Ω Plug-In & Coaxial

9 WAY-0° 2 to 1000 MHz



PSC-9



ZC9PD

MODEL NO.	FREQ. RANGE MHz f_L - f_U	ISOLATION dB					INSERTION LOSS, dB Above 9.6dB					PHASE UNBAL. Degrees			AMPLITUDE UNBAL. dB			VSWR (:1)				CASE STYLE Note B	CONNECTION	PRICE \$ Qty. (1-9)
		L	M*	U			L	M*	U			L	M*	U	L	M*	U	S	OUT					
PSC-9-1	2-300	38	25	26	20	22	15	0.6	1.1	0.9	1.4	1.5	2.0	2.0	5.0	10.0	0.2	0.3	0.8	—	—	C07	gr	93.95
ZC9PD-1000	800-1000		30	20				0.6	1.2				—		0.6			1.22	1.60	1.11	1.30	AB204	—	169.95

L = low range [f_L to $10 f_L$]

M = mid range [$10 f_L$ to $f_U/2$]

U = upper range [$f_U/2$ to f_U]

NOTES:

* VSWR, input 1.2:1 typ., 1.6:1 max; output 1.2:1 typ., 1.35:1 max.

** Input 1.3:1 typ., 1.7 max.; output 1.2:1 typ., 1.6:1 max.

⊗ When only specification for M range given, specification applies to entire frequency range.

A. General Quality Control Procedures, Environmental Specifications, Hi-Rel and MIL description are given in General Information (Section 0).

B. Connector types and case mounted options, case finishes are given in section 0, see "Case styles & Outline Drawings".

C. Prices and specifications subject to change without notice.

1. Absolute maximum power, voltage and current ratings:

1a. Matched power rating,

Models PSC-9-1, ZC9PD-1000 0.5 Watt

Model ZC10PD 10 Watt

All other models 1 Watt

1b. Internal load dissipation,

Models PSC-9-1, ZC9PD-1000, ZC10PD 1.5 Watt

Model ZC10PD-26 0.80 Watt

All other models 0.87 Watt



Distribution Centers NORTH AMERICA 800-654-7949 • 417-335-5935 • Fax 417-335-5945 • EUROPE 44-1252-832600 • Fax 44-1252-837010

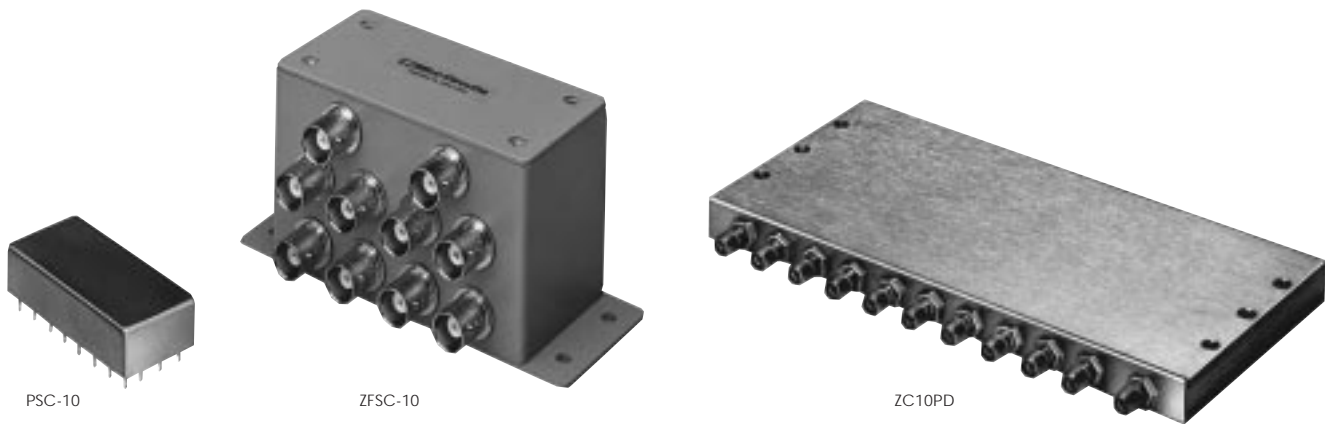
ISO 9001 CERTIFIED

INTERNET <http://www.minicircuits.com>

P.O. Box 350166, Brooklyn, New York 11235-0003 (718) 934-4500 Fax (718) 332-4661

000330

10 Way-0° 0.5 to 2600 MHz



MODEL NO.	FREQ. RANGE MHz f_L - f_U	ISOLATION dB						INSERTION LOSS, dB Above 10dB						PHASE UNBALANCE Degrees			AMPLITUDE UNBALANCE dB			CASE STYLE	CONNECTION	PRICE \$ Qty. (1-9)
		L	M	U	L	M	U	L	M	U	L	M	U	L	M	U	L	M	U	Note B		
PSC-10-1	1-150	36	23	27	23	23	18	0.3	0.6	0.4	0.8	1.0	1.3	3	6	10	0.2	0.3	0.4	E10	bs	85.95
ZFSC-10-1	0.5-100	28	20	30	24	27	20	0.5	0.8	0.4	1.0	0.8	1.5	3	6	10	0.2	0.3	0.4	RR93	—	119.95
ZC10PD-900	800-900			25	20					1.5	2.0			—				0.8		AB204	—	178.95
ZC10PD-900W*	750-900			30	20					0.4	1.0			—				0.6		AB204	—	189.95
NEW ZC10PD-26**	2300-2600			35	20					0.7	1.9			15				1.1		AB204	—	199.95

L = low range [f_L to $10 f_L$] M = mid range [$10 f_L$ to $f_U/2$] U = upper range [$f_U/2$ to f_U]

pin and coaxial connections see case style outline drawings for pin locations

PORT	SUM	#1	#2	#3	#4	#5	#6	#7	#8	#9	#10	NOT USED	GND EXT.	CASE GND
bs	29	7	16	31	24	9	2	26	17	4	5	15	All other pins	All other pins
gr	1	9	13	14	15	16	12	8	4	3	—	—	All other pins	All other pins

000324